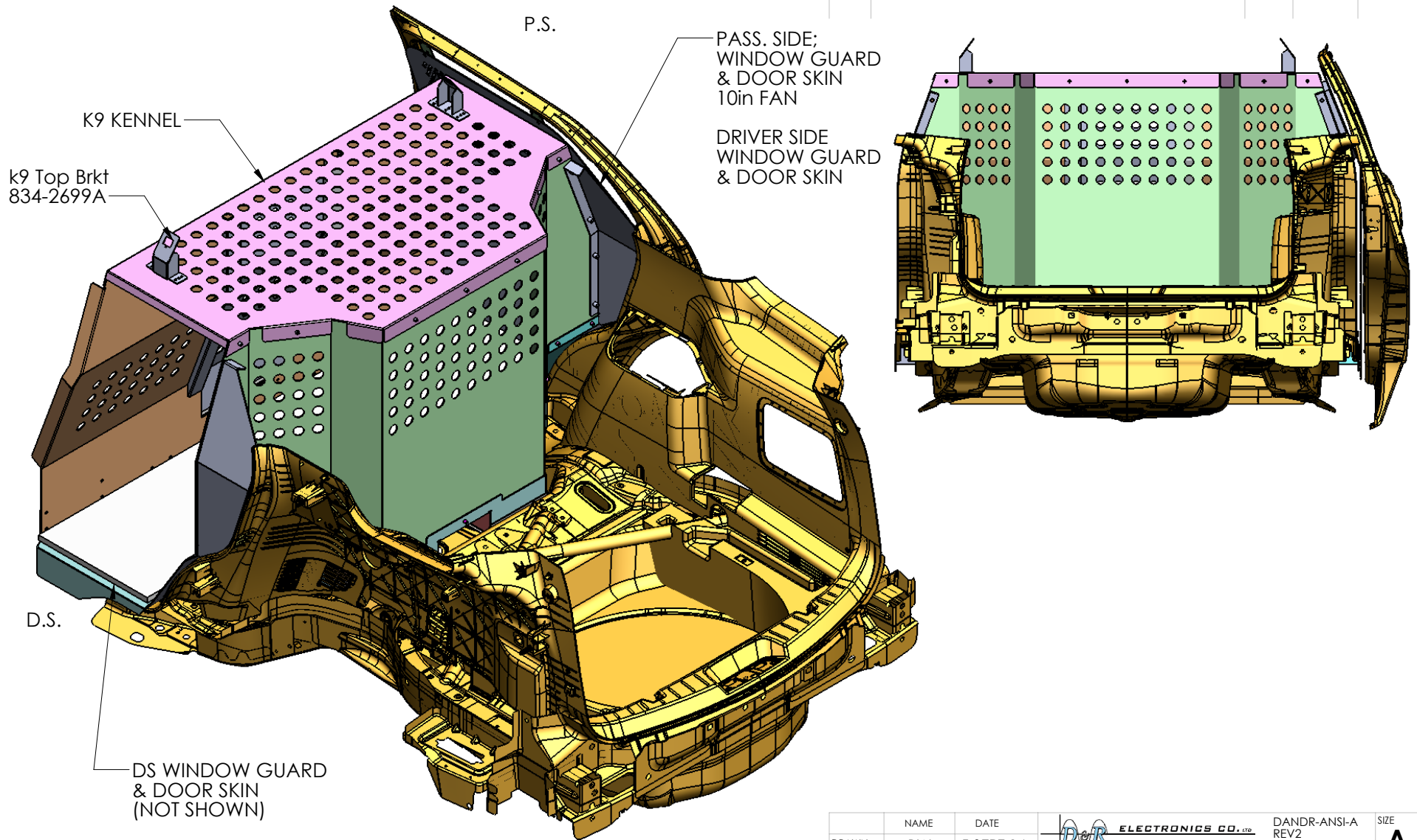


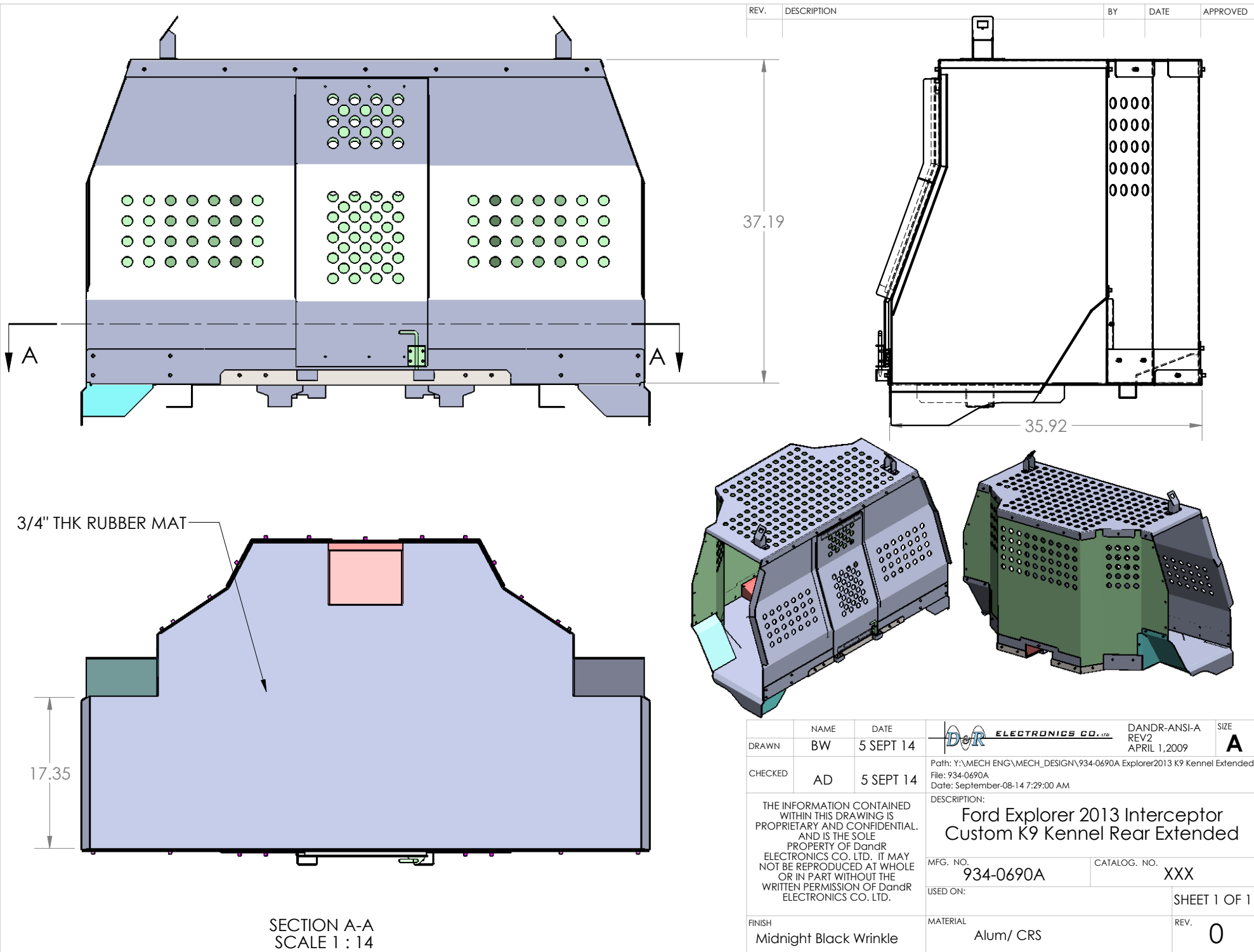
REV.	DESCRIPTION	BY	DATE	APPROVED

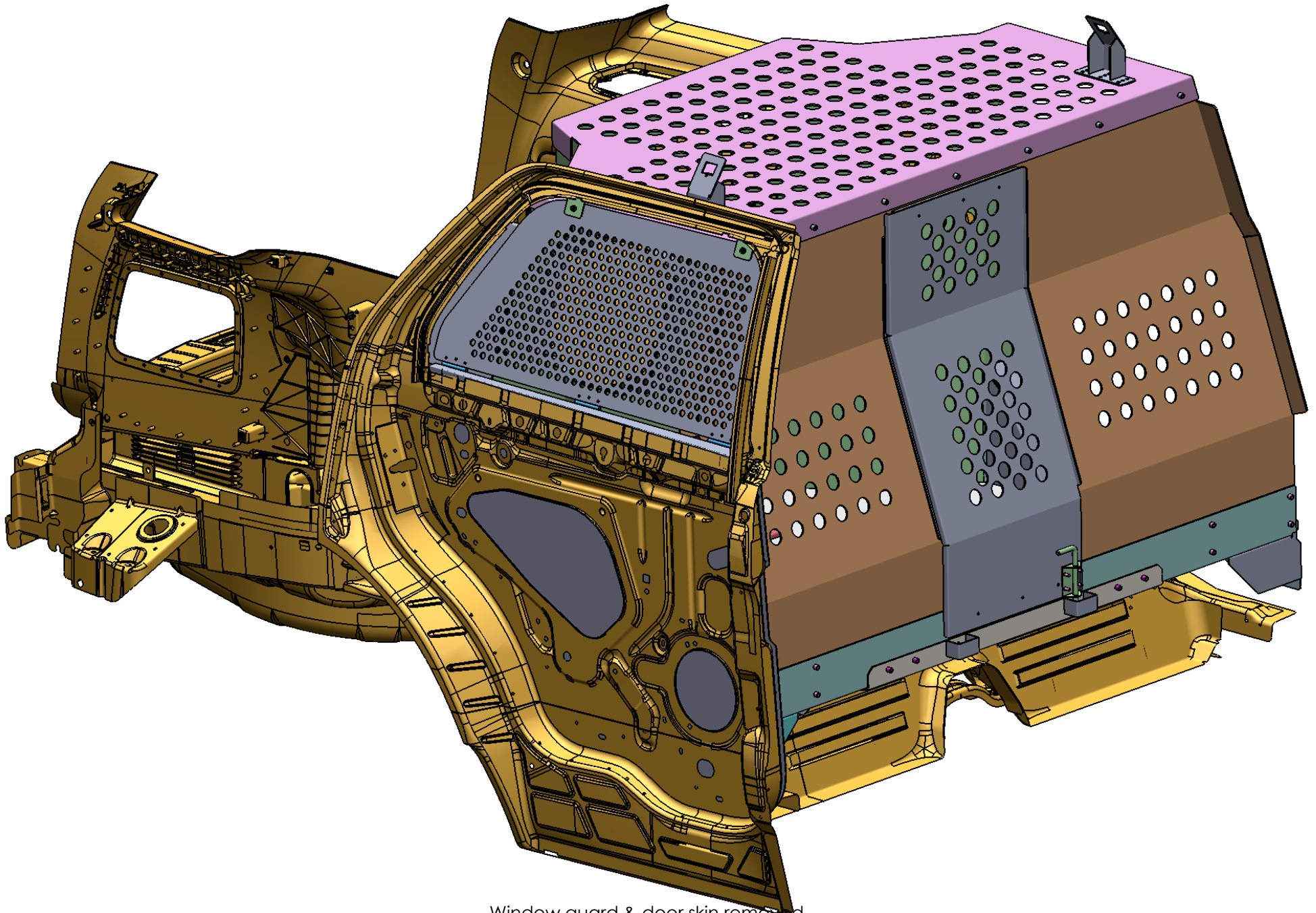


### BUILD SPECIFICATIONS:

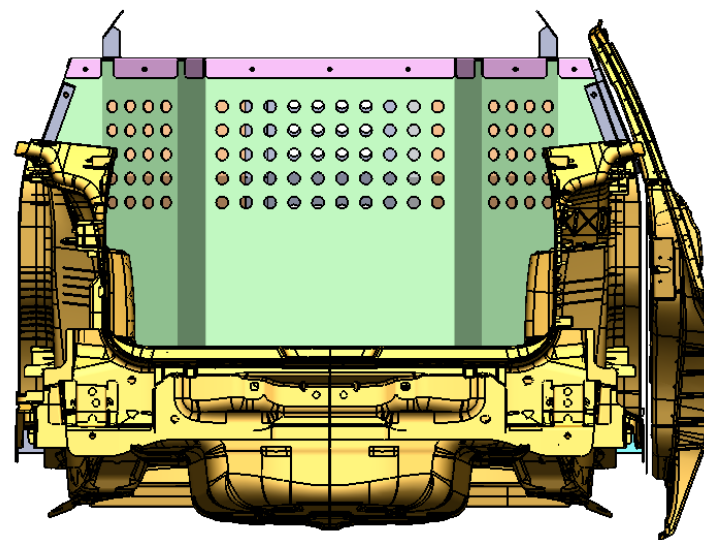
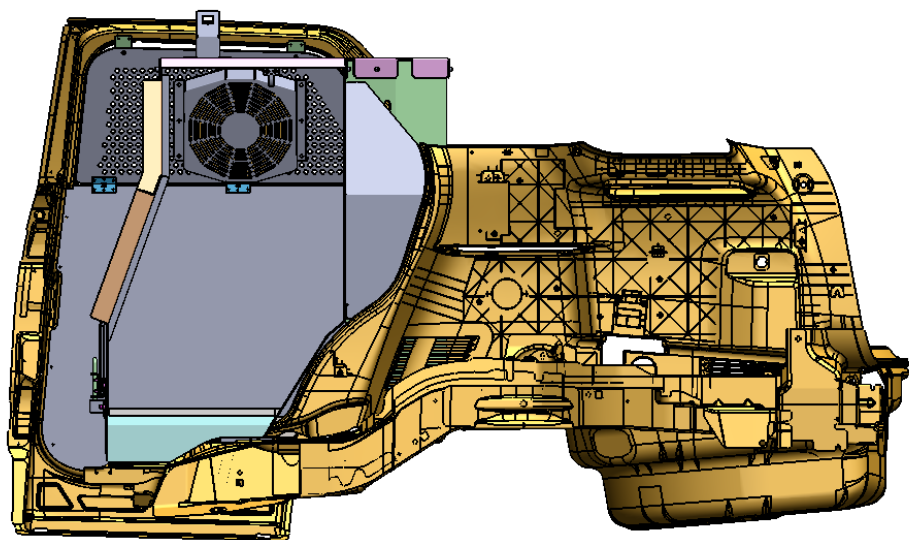
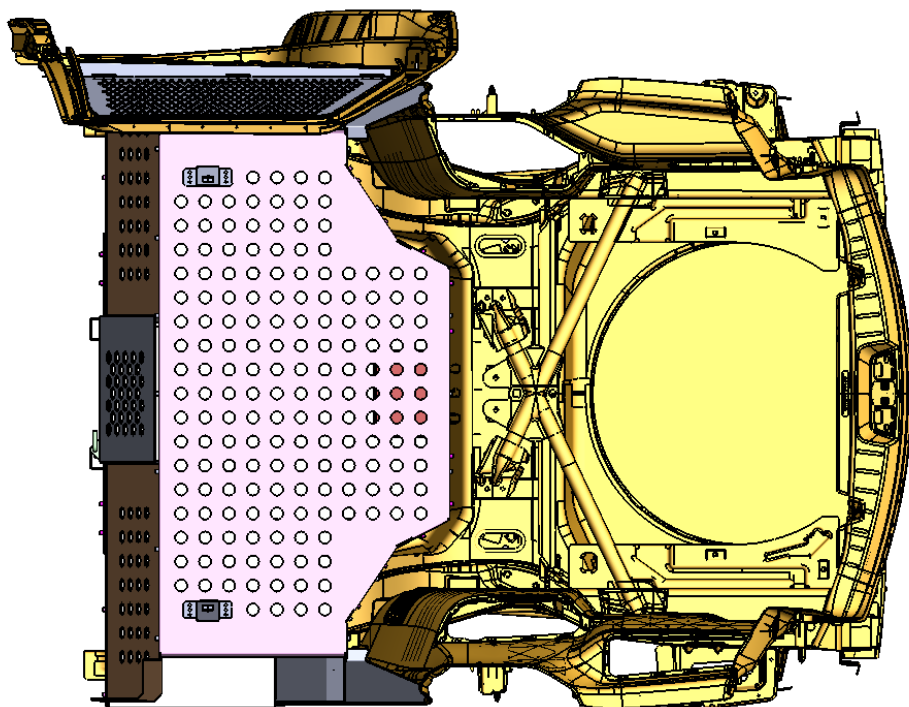
**Kennel Subframe constructed from 12ga Cold Rolled Steel**  
**Kennel main body constructed from 3003 1/8 Thick ALUM**  
**Door skins and window guards constructed from 3003 0.090 ALUM**  
**Rear Dual drawer cabinet constructed from 3003 0.090 ALUM**  
**Rear Cabinet Subframe constructed from 14ga Cold Rolled Steel**  
**All parts are to be paint with durable Black Epoxy Coating**

DRAWN	NAME BW	DATE 5 SEPT 14	<b>DANDR ELECTRONICS CO., LTD.</b> DANDR-ANSI-A REV2 APRIL 1, 2009 Path: Y:\MECH ENG\MECH DESIGN\934-0690A Explor2013 K9 Kennel Extended\ File: 934-0690A Date: September-08-14 7:29:00 AM	SIZE <b>A</b>
CHECKED	AD	5 SEPT 14		
THE INFORMATION CONTAINED WITHIN THIS DRAWING IS PROPRIETARY AND CONFIDENTIAL. AND IS THE SOLE PROPERTY OF DandR ELECTRONICS CO. LTD. IT MAY NOT BE REPRODUCED AT WHOLE OR IN PART WITHOUT THE WRITTEN PERMISSION OF DandR ELECTRONICS CO. LTD.	MFG. NO. <b>934-0690A</b>	CATALOG. NO. <b>XXX</b>	DESCRIPTION: <b>Ford Explorer 2013 Interceptor Custom K9 Kennel Extended with Storage Sys</b>	
FINISH Midnight Black Wrinkle			USED ON:	SHEET 1 OF 1
	MATERIAL Alum/ CRS	REV. <b>0</b>		





Window guard & door skin removed



Window guard & door skin removed