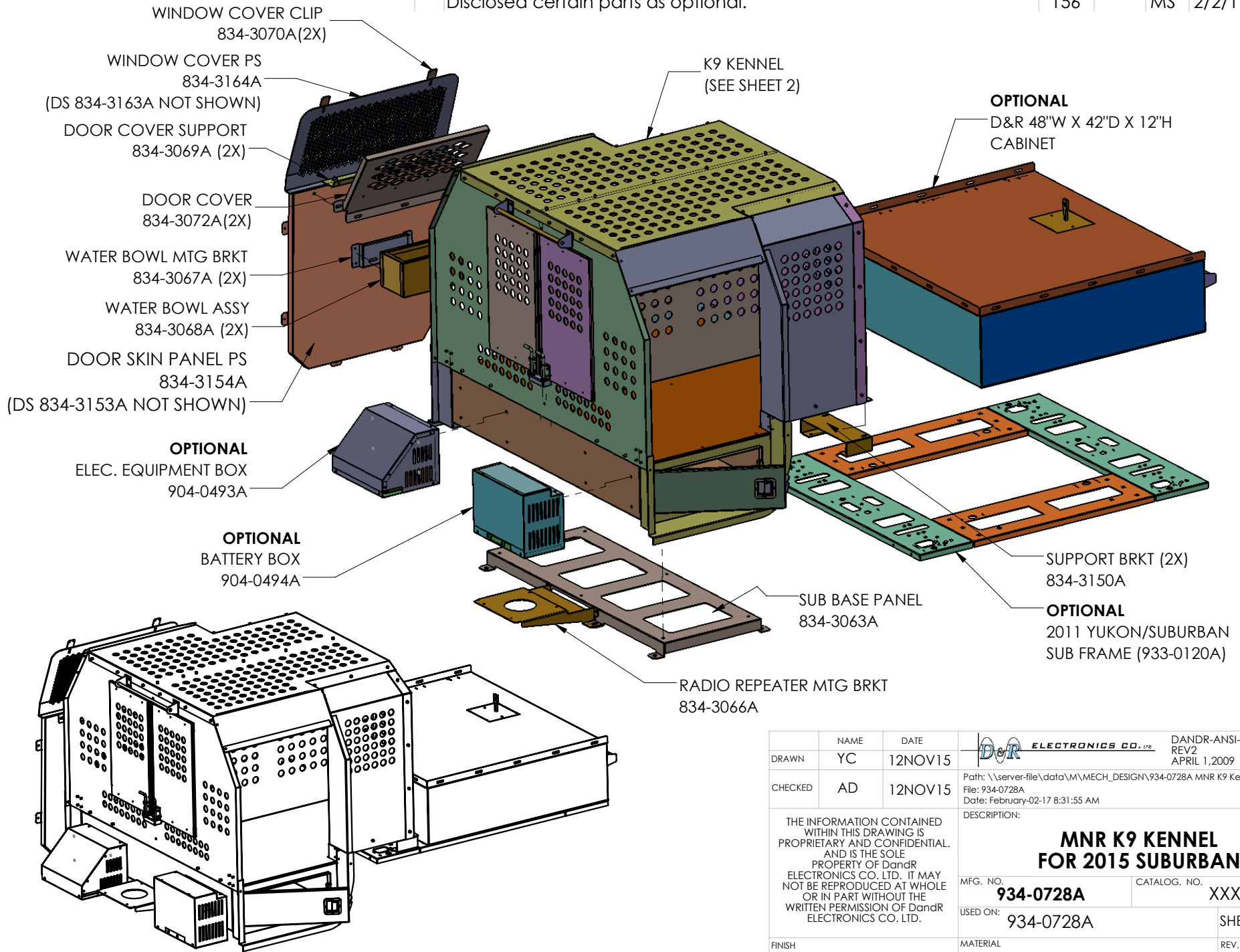
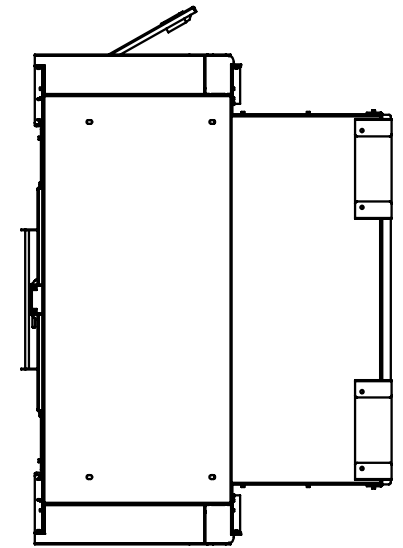
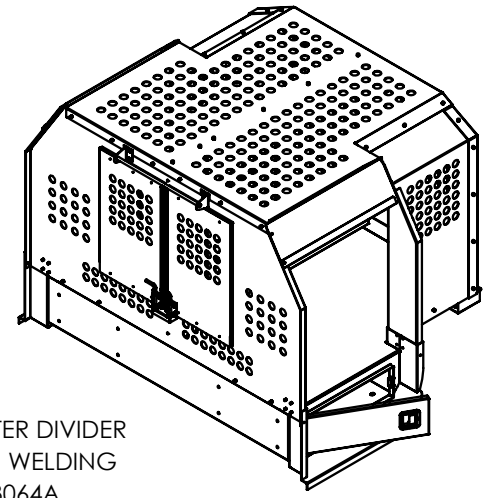
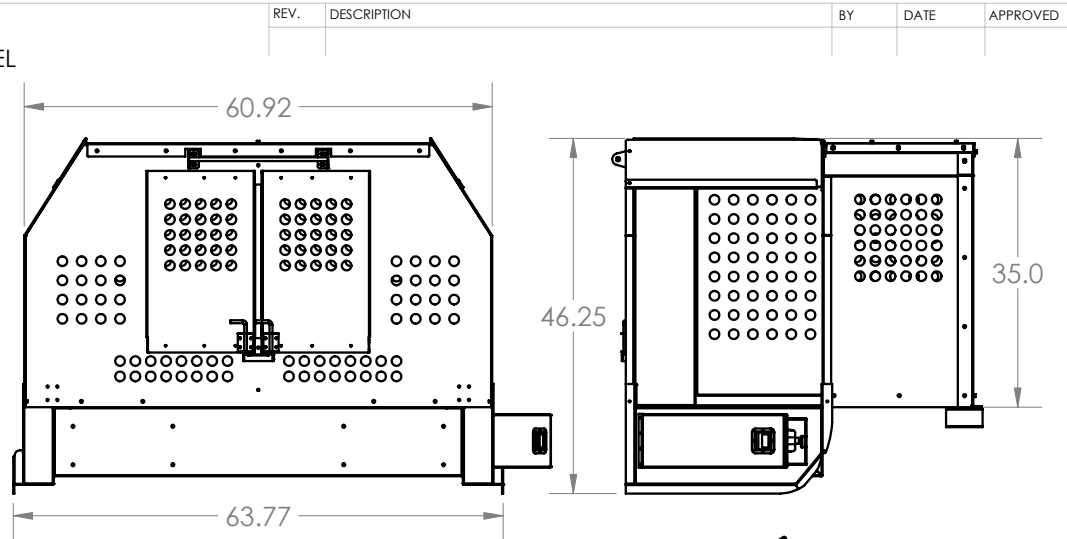
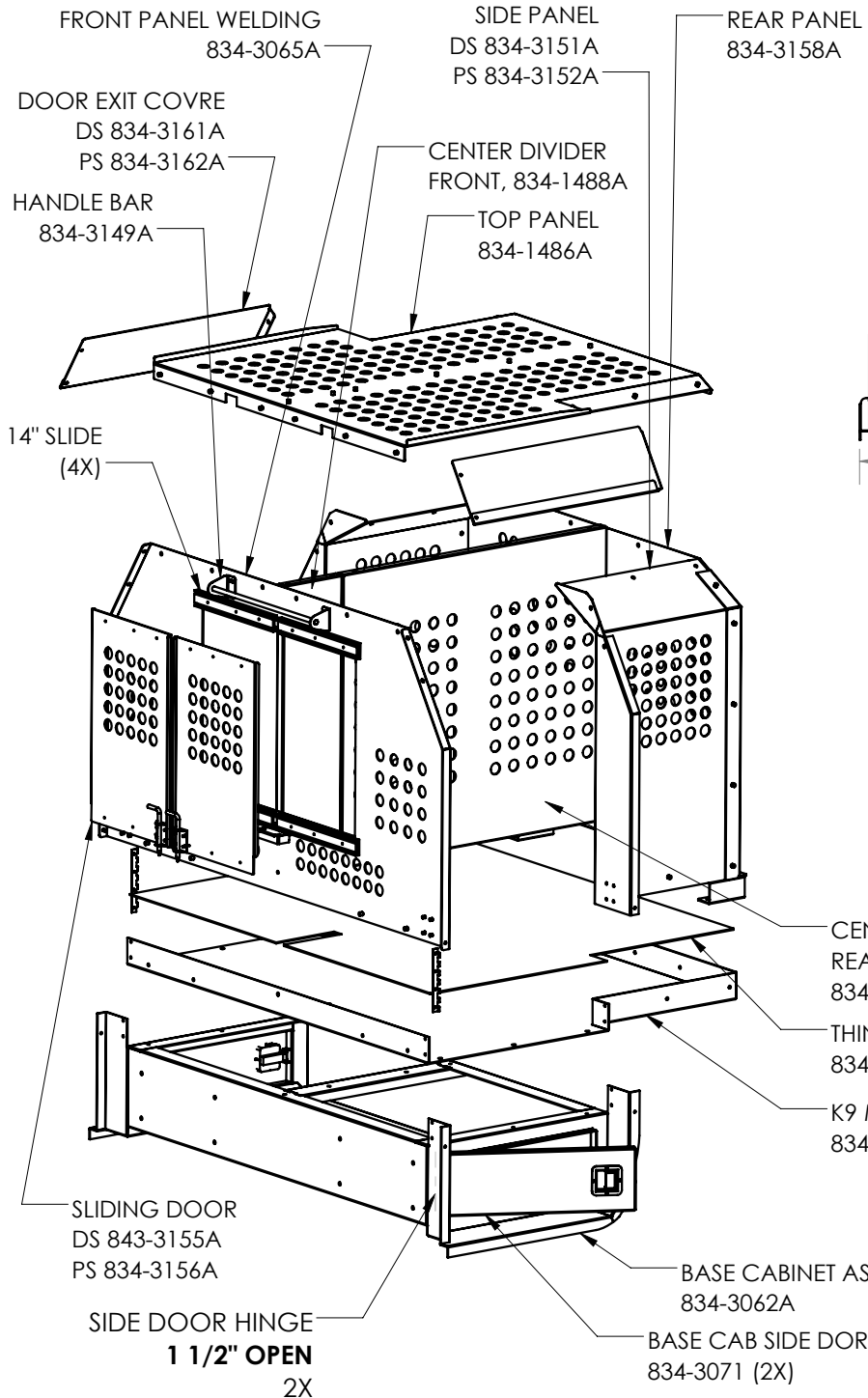


REV.	DESCRIPTION	NCR	DCR	BY	DATE	APPROVED
	Disclosed certain parts as optional.	156		MS	2/2/17	



DRAWN	NAME YC	DATE 12NOV15	 <small>Path: \\server-file\data\M\MECH_DESIGN\934-0728A.MNR K9 Kennel 2015 Suburban\</small> <small>File: 934-0728A</small> <small>Date: February-02-17 8:31:55 AM</small>	DANDR-ANSI-A REV2 APRIL 1, 2009	SIZE <b>A</b>
CHECKED	AD	12NOV15		DESCRIPTION:	
THE INFORMATION CONTAINED WITHIN THIS DRAWING IS PROPRIETARY AND CONFIDENTIAL. AND IS THE SOLE PROPERTY OF DandR ELECTRONICS CO. LTD. IT MAY NOT BE REPRODUCED AT WHOLE OR IN PART WITHOUT THE WRITTEN PERMISSION OF DandR ELECTRONICS CO. LTD.			<b>MNR K9 KENNEL          FOR 2015 SUBURBAN</b>		
MFG. NO.		934-0728A		CATALOG. NO. XXX	
USED ON:		934-0728A		SHEET 1 OF 2	
FINISH	GRAY SG FS16437		MATERIAL	.125" ALUM	
			REV.	0	



REV.	DESCRIPTION	BY	DATE	APPROVED

DRAWN	NAME YC	DATE 12NOV15	<b>ELECTRONICS CO., LTD.</b> DANDR-ANSI-A REV2 APRIL 1, 2009	SIZE <b>A</b>
CHECKED	AD	12NOV15		Path: \\server-file\data\M\MECH_DESIGN\934-0728A.MNR K9 Kenel 2015 Suburban\ File: 934-0728A Date: February-02-17 8:31:55 AM DESCRIPTION:
THE INFORMATION CONTAINED WITHIN THIS DRAWING IS PROPRIETARY AND CONFIDENTIAL. AND IS THE SOLE PROPERTY OF DandR ELECTRONICS CO. LTD. IT MAY NOT BE REPRODUCED AT WHOLE OR IN PART WITHOUT THE WRITTEN PERMISSION OF DandR ELECTRONICS CO. LTD.			<b>MNR K9 KENEL          FOR 2015 SUBURBAN</b>	
MFG. NO.		934-0728A		CATALOG. NO.
USED ON:		XX		SHEET 2 OF 2
FINISH	GRAY SG FS16437		MATERIAL	.125" ALUM
				REV. 0