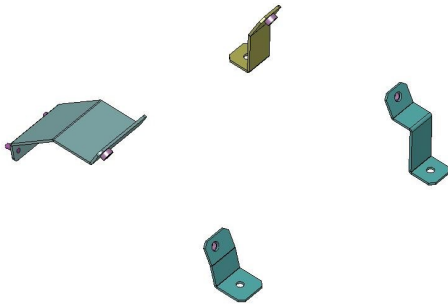


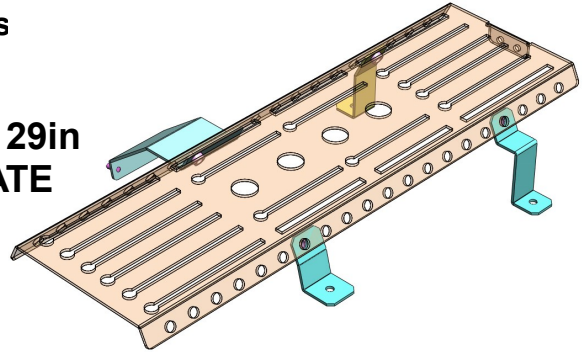


DODGE RAM FLOOR PLATE KIT 905-0116A

Installation Instructions



**OPTIONAL 29in
FLOORPLATE
SHOWN**



Parts List

Part #	Description	Qty
805-0200A	FLOOR PLATE 29in WIDE OPTIONAL SHOWN	1
805-0220A	FRONT PS MOUNTING BRACKET	1
805-0221A	REAR PS MOUNTING BRACKET	1
805-0218A	FRONT DS MOUNTING BRACKET	1

Hardware List

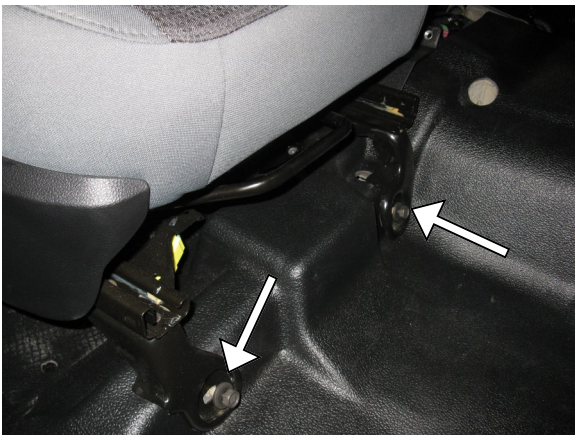
Line #	Description	Qty
1	BOLT HEX 3/8-16 X 5/8"	4
2	3/8" FLAT WASHER	4
3	3/8" LOCK WASHER	4
4	1/4-20 NUT	2
5	M8x1.25x25mm HEX HEAD BOLT	1
6	5/16 FLAT WASHER, ZINC	1
7	5/16 LOCK WASHER, ZINC	1

Installation Instructions

Step 1

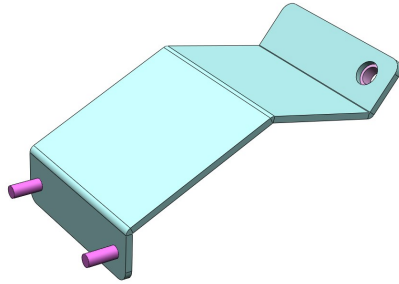
Remove passenger seat and center seat if equipped. There are 4 Bolts securing the seat to the floor

NOTE: keep all Center console, or center seat mounting hardware to install floor plate brackets



Step 2

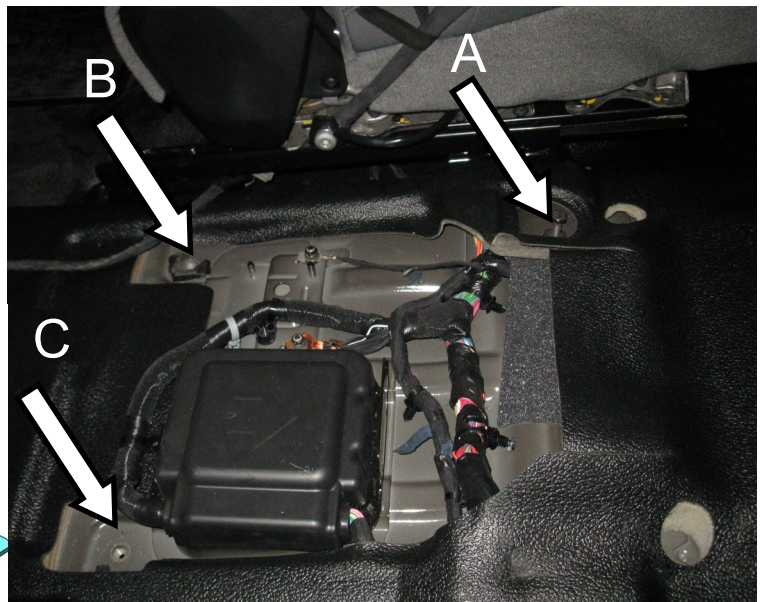
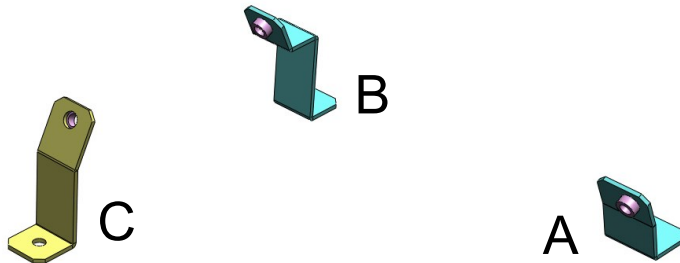
Mount passenger side front bracket to seat using 2pc 1/4-20 Nyloc Nut as shown.



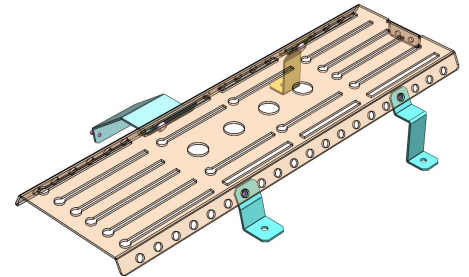
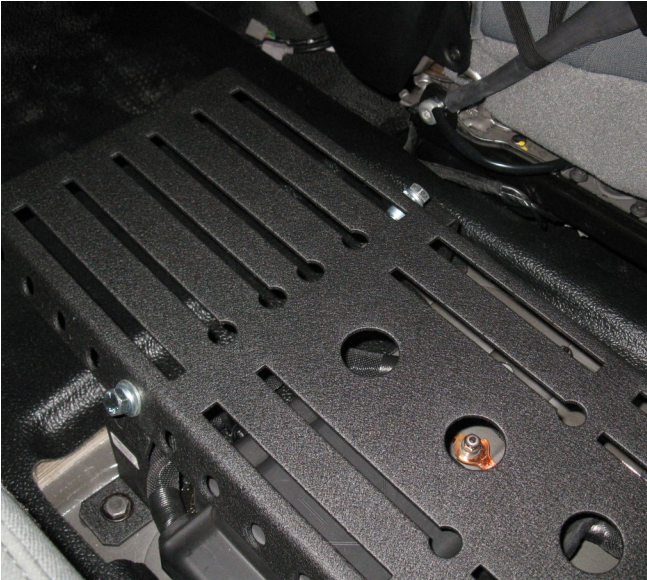
Step 3 Reinstall passenger seat and tighten the 4 mount bolts removed in Step 1.

Step 4 Locate the other 3 floor bracket mounting location:

- A) Driver side front (mount using factory M8 Bolt)
- B) Driver side rear (mounting using supplier M8 Bolts and Washers)
- C) Passenger side rear (mount using factory M8 Bolt)



Step 5 Places Floor plate over mounting bracket and attach floor plate using supplied 3/8-16 Hex bolt . For easy assembly tighten these four bolts before tightening factory floor bolts.



WARRANTY

D & R Electronics warrants its new products to be free from defects in material and workmanship, under normal use and service, for a period of one year on parts replacement, and one year on labor.

This warranty applies only to original purchasers acquiring the product directly from D&R Electronics, or its authorized dealers. Warranty will not be recognized without proof of purchase or bill of sale. This warranty is not transferable.

The warranty begins on the date of delivery to the first user/purchaser. This warranty shall not apply to products which must be repaired due to normal wear and tear, negligence, improper installation, abuse, misuse, or which have been altered or modified at a facility other than D & R Electronics, or its authorized depot center. Units proved to be defective within the warranty period, based on an examination by D&R Electronics, will be replaced or repaired at D & R Electronics' option. This warranty does not cover travel expenses or labor charges for removal or installation. Lamps, flash tubes, batteries or other items considered consumables are not covered under warranty.

This warranty is in lieu of all other express warranties. D&R Electronics makes no other warranties, expressed or im-

PRODUCT RETURN POLICY

In order to provide you with faster service, product returns for repair or replacement, must have a **Return Goods Authorization Number (RGA number)**. Please contact our company to obtain a RGA number before you return the product to D & R ELECTRONICS. Write the RGA number clearly on the package. Be sure you use sufficient packing materials to avoid damage to the product being returned while in transit.

D & R ELECTRONICS assumes no responsibility or liability for expenses incurred for the removal and/or the installation of products requiring service and/or repair. Repairing or replacing product is at the discretion of D & R ELECTRONICS.

USA
2321 Kenmore Ave.
Buffalo, NY 14207

D&R Electronics Co. Ltd.
CANADA
8820 George Bolton Pkwy.
Bolton, Ontario L7E 2Y4
Tel.: (905)951-9997 Fax: (905)951-0019
Toll Free 1-800-538-7338
www.dandrelectronics.com