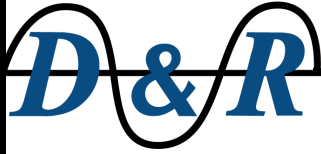
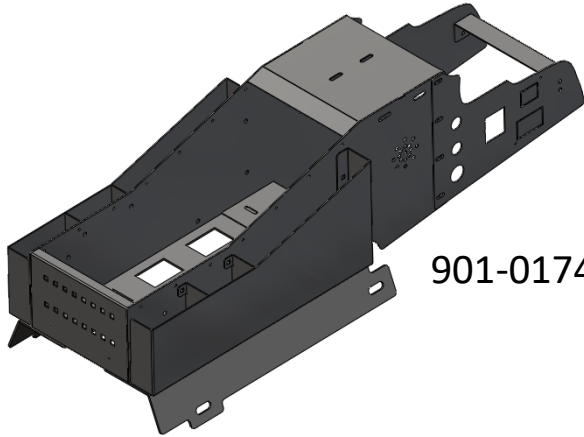


MK 5 Chevrolet Tahoe/Suburban Console

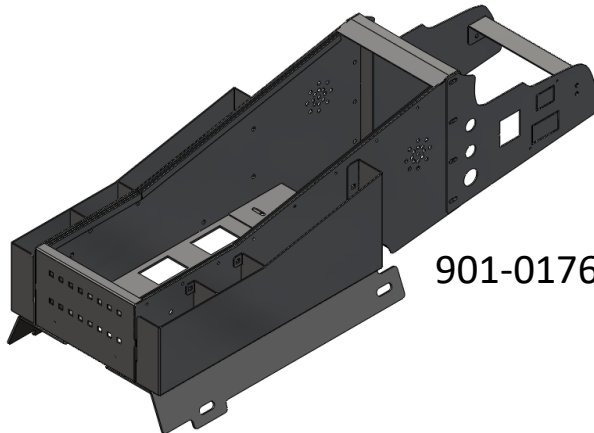
901-0174A, 901-0176A & 901-0183A



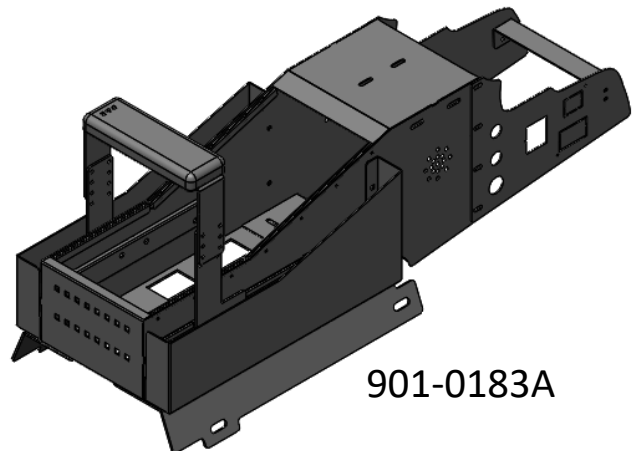
Installation Manual



901-0174A



901-0176A



901-0183A

Content	Page
Hardware List	2
Component List	2
Assembly Overview	3-7
Warranty and Return Policy	5-10

Hardware List

Part Number	Description	Quantity
401-3056	M12 x 1.75 x 20mm	4
401-0043	1/4-20 x 3/4" Carriage Bolt	4
403-0005A	1/4 Flat Washer	4
422-0009	1/4-20 Nyloc Nut	4
401-0017	#10-32 x 3/8" RD Comb	12
403-0010	#10 Lock Washer	12
403-0007A	#10 Flat Washer	12

Component List

Part Number	Description	Quantity
801-0783A	Front DS Wing	1
801-0784A	Front PS Wing	1
801-0785A	Front Support Bracket	1
808-0146A	DS Mounting Bracket	1
808-0147A	PS Mounting Bracket	1
For 901-0174A		
801-0786A	Console Main Body	1
801-0791A*	DS Console Pocket	1
801-0792A*	PS Console Pocket	1
For 901-0176A		
801-0793A	Console Main Body	1
801-0595A*	DS Console Pocket	1
801-0596A*	PS Console Pocket	1
For 901-0183A		
801-0812A	Console Main Body	1
801-0813A*	DS Console Pocket	1
801-0814A*	PS Console Pocket	1

Note*: These components are optional and need to be ordered separately if desired.

Installation Instructions:

Part A: Vehicle Preparation

Step 1:

Remove the covers on the lower, forward sides of the factory console. Remove the bolts located underneath.



Figure 1.0



Figure 1.1

Step 2:

Both passenger and driver's seat will have to temporarily unbolted and moved out of the way to access the mounting points on the sides of the center hump.



Figure 1.2



Figure 1.3

Step 3:

Pull harness out of the dash unplug components. These components will be reinstalled at the later step.



Figure 1.4

Part B: Installation of new console

Step 1:

Parts Required:



808-0146A - DS Mounting Bracket

808-0147A - PS Mounting Bracket

Hardware Required:

M12 x 1.75 x 20mm x 4*

Note*: If the vehicle was equipped with the third seating the hardware can be reused for installing the Mounting Brackets, otherwise hardware has been supplied.

Place the DS Mounting Bracket onto the center area as shown in Figure 1.0. The Mounting Bracket should avoid the factory pin at the front. **Loosely** secure the bracket down to the factory mounting points using either the provide hardware or the factory hardware. Repeat for passenger side.

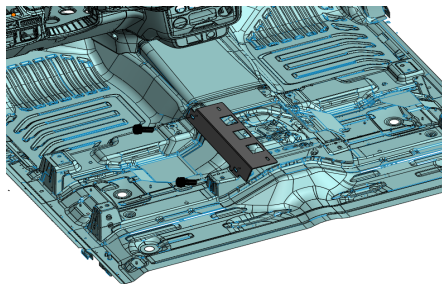


Figure 2.0

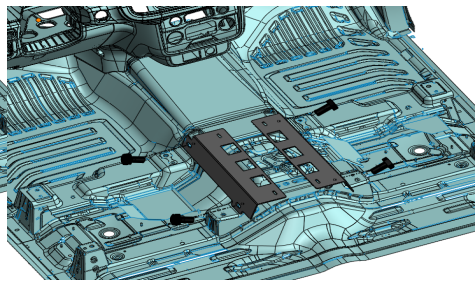


Figure 2.1

These bolts will be tighten down in the following steps.

Step 2:

Hardware Required:

1/4-20 x 3/4" Carriage Bolt (401-0043) x 2

1/4 Flat Washer (403-0005A) x 2

Place two of the 1/4-20 x 3/4" Carriage Bolts and 1/4 flat washers in the slots located at the front of the brackets with the threads sticking up as shown in Figure 2.3 on the following page.

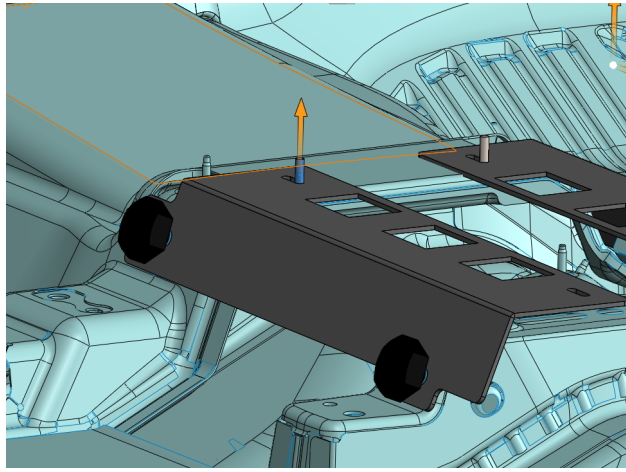
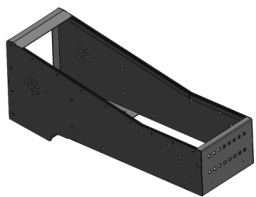


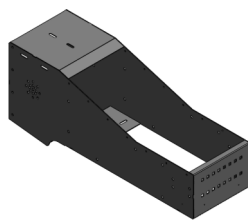
Figure 2.3

Step 3

Parts Required:



801-0786A OR



801-0793A Console Main Body

Carefully lift the main console component in the vehicle and place it on top of the mounting brackets. Adjust the bolts that were previously installed to line up with the slots located on the main console component. Slide the console towards the dash.

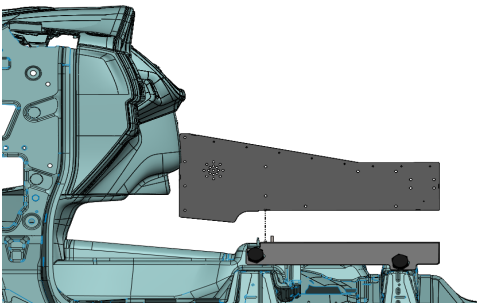


Figure 2.4

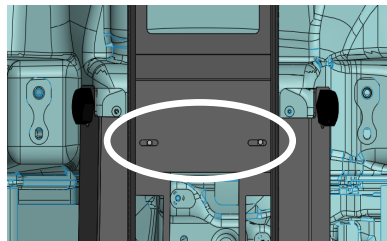


Figure 2.5

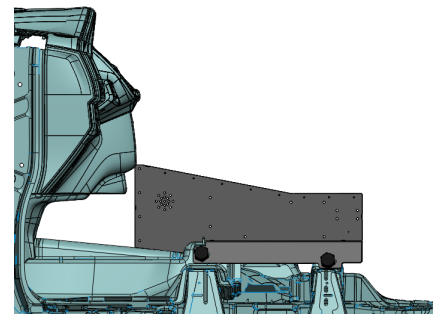


Figure 2.6

Step 4

Hardware Required:

1/4-20 x 3/4" Carriage Bolt (401-0043) x 2 1/4 Flat Washer (403-0005A) x 2

1/4-20 Nyloc Nut (422-0009) x 4

Insert the two remaining 1/4-20 Carriage bolts and 1/4 flat washers into the slots located at the rear of the mounting brackets and console. **Loosely** fasten using the 1/4-20 Nyloc Nuts supplied. Repeat for the front two Carriage Bolts previously install.

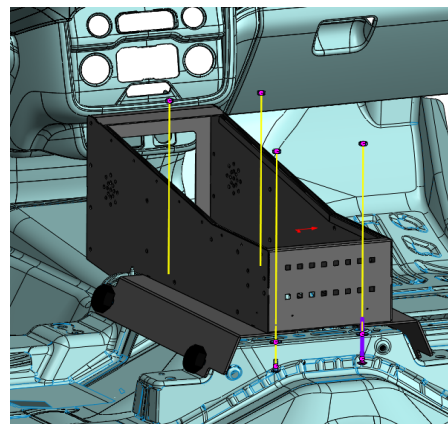


Figure 2.7

Step 5:

Hardware Required:

#10-32 x 3/8" RD Comb (401-0017)	x4
#10 Lock Washer (403-0010)	x4
#10 Flat Washer (403-0007A)	x4

Loosely attach the front PS Wing using the above listed hardware

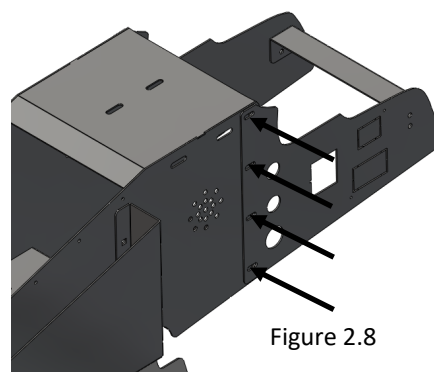


Figure 2.8

Step 6:

Install and plug in the factory AUX module, 12V socket and the OEM 120 volt socket into the PS Wing in the indicated spot in Figure 2.9. Depending on the factory AUX module you will have to knock out either "1" or "2". Gently file the sharp edges where the knock out plate was located before inserting the module.

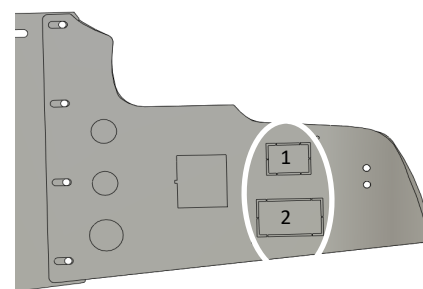
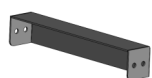


Figure 2.9

Step 7:

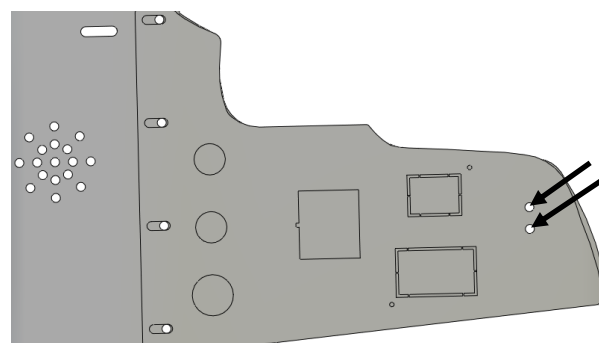
Parts Required:



Front Support Bracket (801-0785A)

Hardware Required:

#10-32 x 3/8" RD Comb (401-0017)	x2
#10 Lock Washer (403-0010)	x2
#10 Flat Washer (403-0007A)	x2



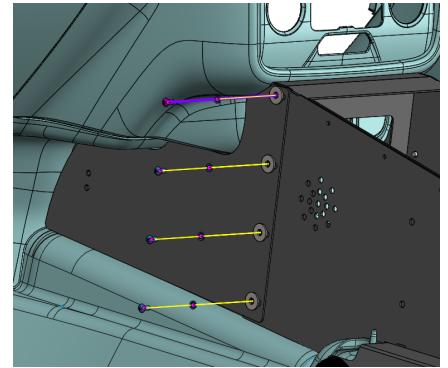
Attach the front support bracket using the hardware listed.

Step 8:

Hardware Required:

#10-32 x 3/8" RD Comb (401-0017)	x4
#10 Lock Washer (403-0010)	x4
#10 Flat Washer (403-0007A)	x4

Loosely attach the Front DS Wing to the console main body using the hardware listed above.

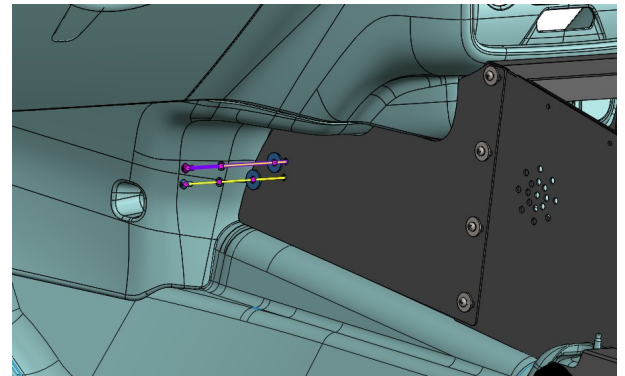


Step 9:

Hardware Required:

#10-32 x 3/8" RD Comb (401-0017)	x2
#10 Lock Washer (403-0010)	x2
#10 Flat Washer (403-0007A)	x2

Attach the front DS Wing to the front support bracket using the hardware listed.



Step 10:

Ensure the console is in desired location. Tighten all the hardware down.

Part C: Optional Pockets

If optional pockets were purchased they will come already installed on the console.

Installation is now complete

WARRANTY

D & R Electronics warrants its new products to be free from defects in material and workmanship, under normal use and service, for a period of one year on parts replacement, and one year on labor.

This warranty applies only to original purchasers acquiring the product directly from D&R Electronics, or its authorized dealers. Warranty will not be recognized without proof of purchase or bill of sale. This warranty is not transferable.

The warranty begins on the date of delivery to the first user/purchaser. This warranty shall not apply to products which must be repaired due to normal wear and tear, negligence, improper installation, abuse, misuse, or which have been

altered or modified at a facility other than D & R Electronics, or its authorized depot center. Units proved to be defective within the warranty period, based on an examination by D&R Electronics, will be replaced or repaired at D & R Electronics' option. This warranty does not cover travel expenses or labor charges for removal or installation. Lamps, flash tubes, batteries or other items considered consumables are not covered under warranty.

This warranty is in lieu of all other express warranties. D&R Electronics makes no other warranties, expressed or implied, than the express warranties contained herein.

PRODUCT RETURN POLICY

In order to provide you with faster service, product returns for repair or replacement, must have a **Return Goods Authorization Number (RGA number)**. Please contact our company to obtain a RGA number before you return the product to D & R ELECTRONICS. Write the RGA number clearly on the package. Be sure you use sufficient packing materials to avoid damage to the product being returned while in transit.

D & R ELECTRONICS assumes no responsibility or liability for expenses incurred for the removal and/or the installation of products requiring service and/or repair. Repairing or replacing product is at the discretion of D & R ELECTRONICS.

D&R ELECTRONICS Co. LTD.

CANADA

8820 George Bolton Pkwy.

Bolton, Ontario L7E 2Y4

Tel.: (905)951-9997

Fax: (905)951-0019

USA

2299 Kenmore Ave

Building #3, Doors 11-14

Buffalo, NY, 14207

Toll Free 1-800-538-7338

www.dandrelectronics.com