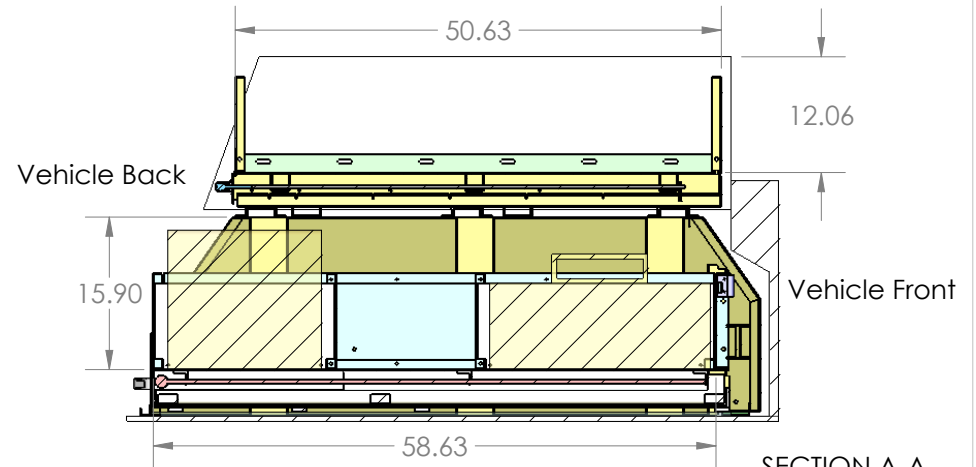
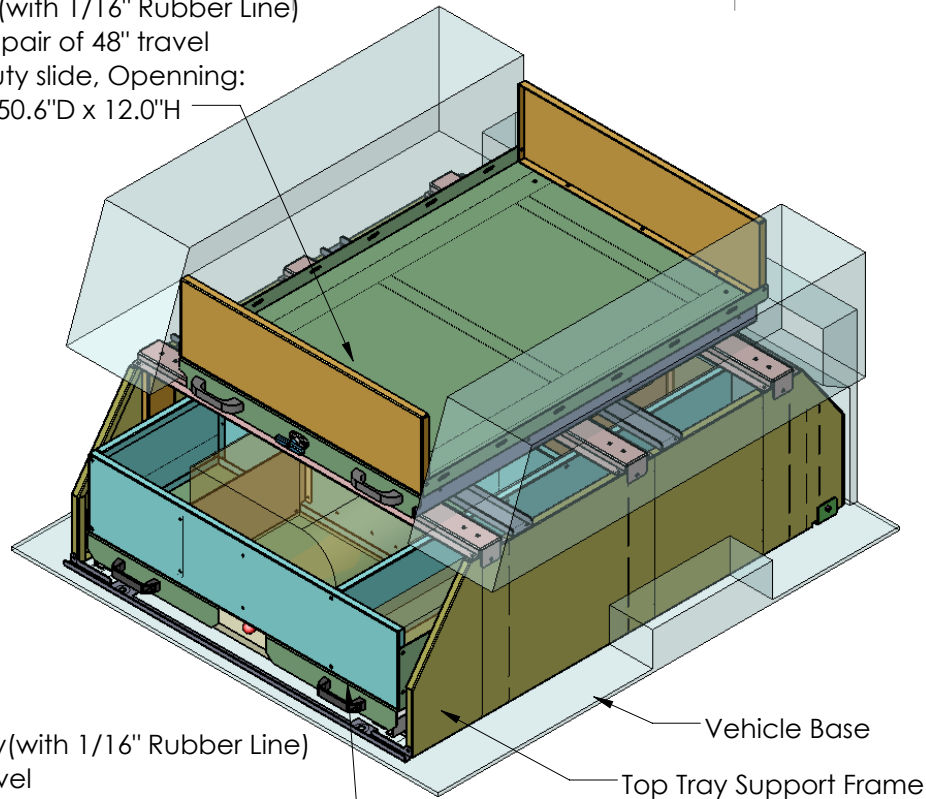


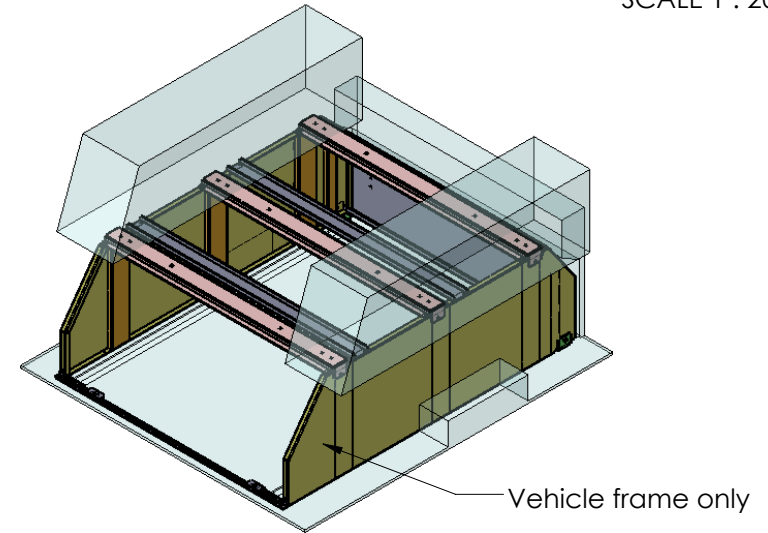
Top Tray (with 1/16" Rubber Line)
with one pair of 48" travel
heavy duty slide, Opening:
35.7"W x 50.6"D x 12.0"H



SECTION A-A
SCALE 1 : 20

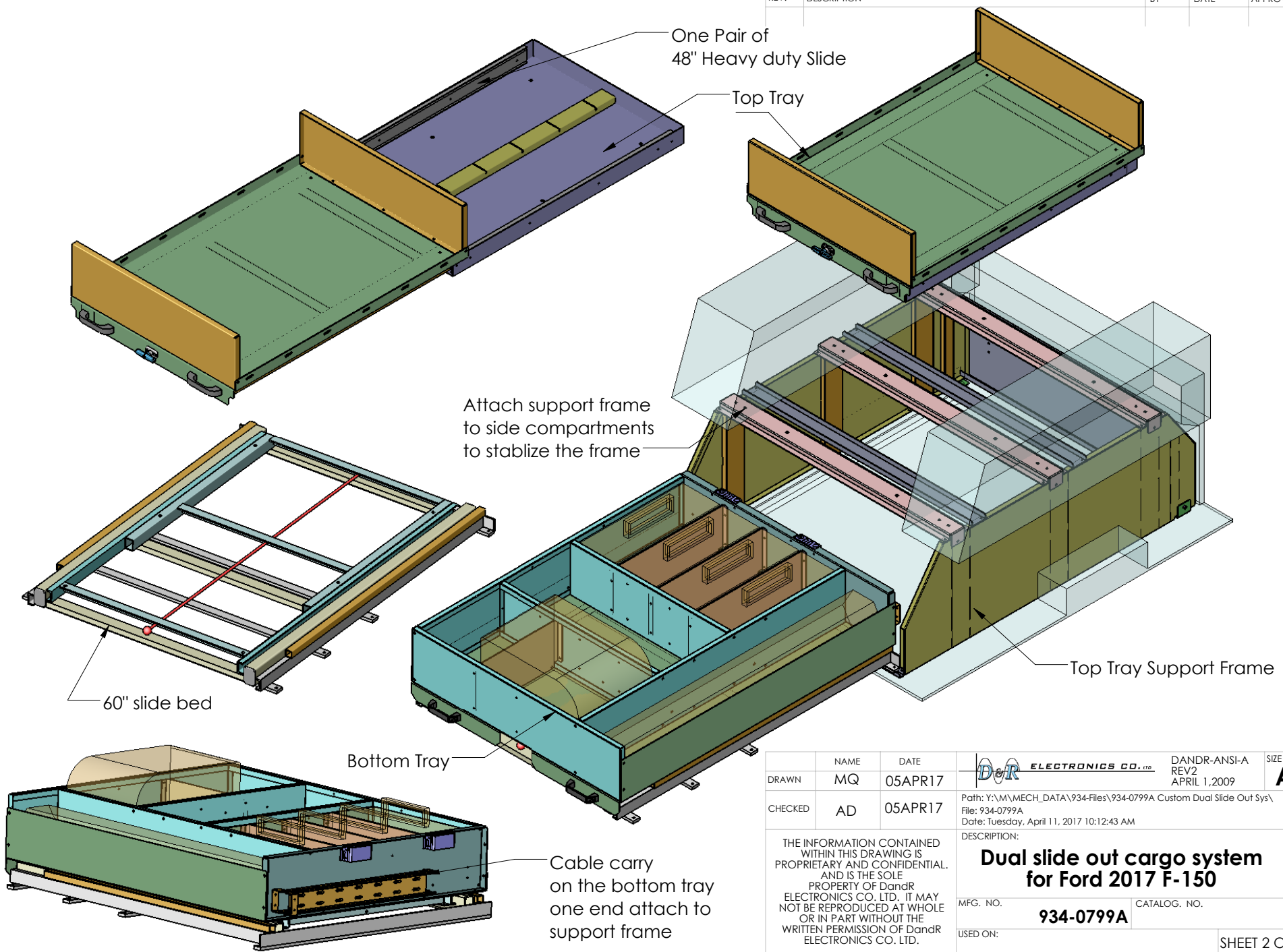


Bottom Tray(with 1/16" Rubber Line)
with 60" travel
heavy duty slide bed
Opening:
44.75"W x 57.75"D x 15.9"H



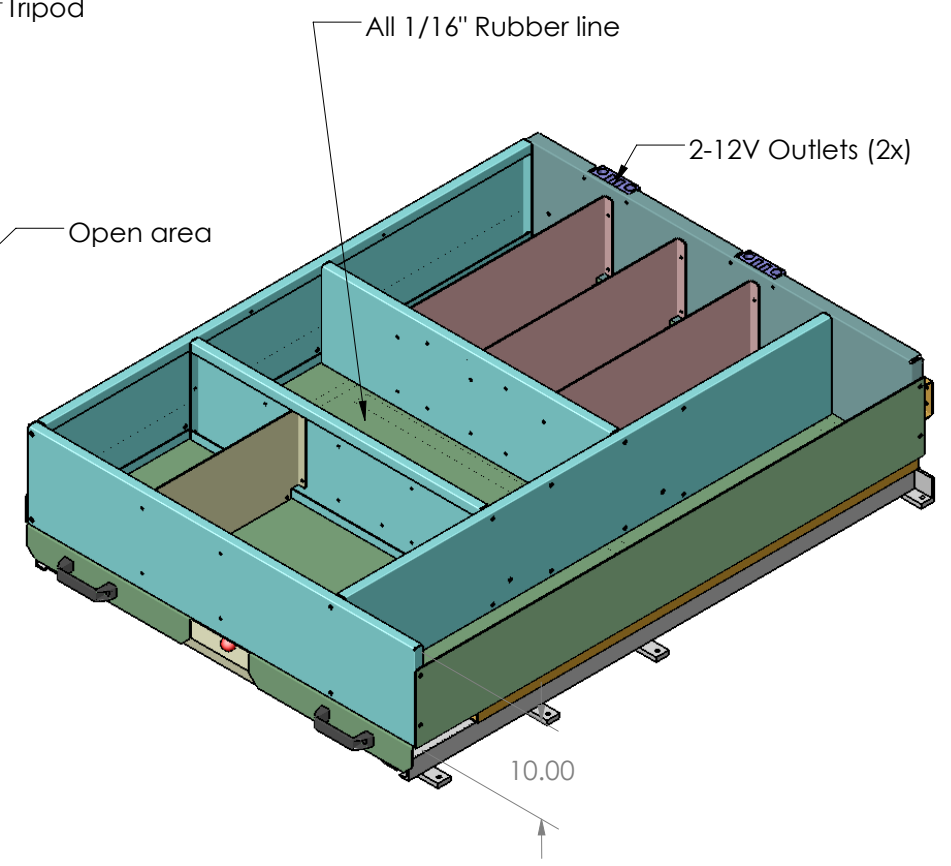
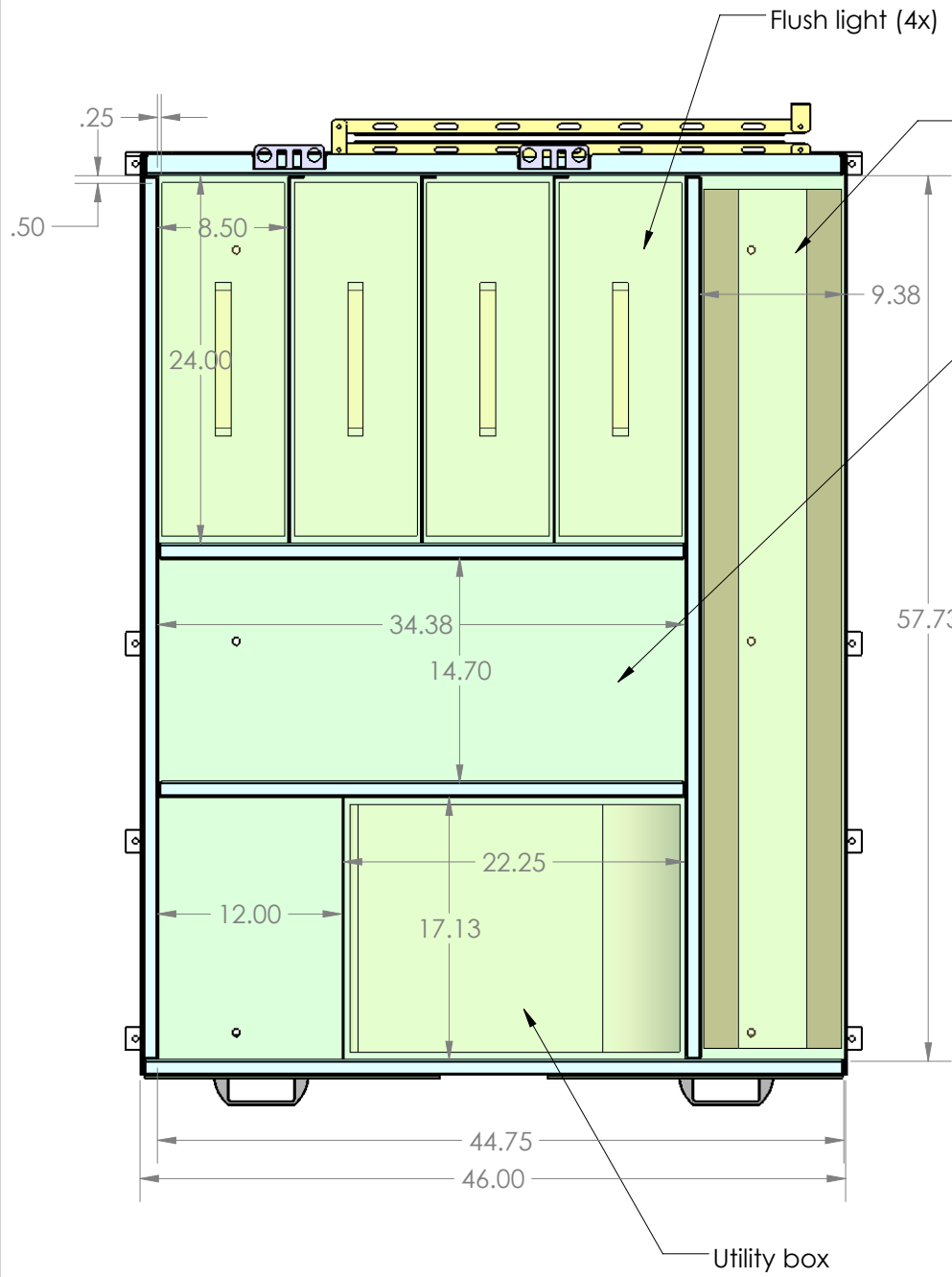
REV.	DESCRIPTION	BY	DATE	APPROVED
------	-------------	----	------	----------

DRAWN	NAME MQ	DATE 05APR17	ELECTRONICS CO., LTD. DANDR-ANSI-A REV2 APRIL 1, 2009	SIZE A
CHECKED	AD	05APR17		Path: Y:\M\MECH_DATA\934-Files\934-0799A Custom Dual Slide Out Sys\ File: 934-0799A Date: Tuesday, April 11, 2017 10:12:43 AM DESCRIPTION: Dual slide out cargo system for Ford 2017 F-150
THE INFORMATION CONTAINED WITHIN THIS DRAWING IS PROPRIETARY AND CONFIDENTIAL. AND IS THE SOLE PROPERTY OF DANDR ELECTRONICS CO. LTD. IT MAY NOT BE REPRODUCED AT WHOLE OR IN PART WITHOUT THE WRITTEN PERMISSION OF DANDR ELECTRONICS CO. LTD.			MFG. NO. 934-0799A	CATALOG. NO. XXX
FINISH Black Midnight Winkle			USED ON: 0.09" / 1/8" THK ALUM	SHEET 1 OF 3 REV. 0



NAME	DATE	ELECTRONICS CO., LTD. DANDR-ANSI-A REV2 APRIL 1, 2009	SIZE
DRAWN	05APR17		A
CHECKED	05APR17	Path: Y:\M\MECH_DATA\934-Files\934-0799A Custom Dual Slide Out Sys\ File: 934-0799A Date: Tuesday, April 11, 2017 10:12:43 AM	
THE INFORMATION CONTAINED WITHIN THIS DRAWING IS PROPRIETARY AND CONFIDENTIAL AND IS THE SOLE PROPERTY OF DandR ELECTRONICS CO. LTD. IT MAY NOT BE REPRODUCED AT WHOLE OR IN PART WITHOUT THE WRITTEN PERMISSION OF DandR ELECTRONICS CO. LTD.		DESCRIPTION: Dual slide out cargo system for Ford 2017 F-150	
MFG. NO.	934-0799A	CATALOG. NO.	
USED ON:			SHEET 2 OF 3
FINISH	Black Midnight Wrinkle	MATERIAL	0.09" / 1/8" THK ALUM
		REV.	0

REV.	DESCRIPTION	BY	DATE	APPROVED



DRAWN	NAME MQ	DATE 05APR17	 DANDR-ANSI-A REV2 APRIL 1, 2009	SIZE A
CHECKED	AD	05APR17		Path: Y:\M\MECH_DATA\934-Files\934-0799A Custom Dual Slide Out Sys\ File: 934-0799A Date: Tuesday, April 11, 2017 10:12:43 AM
THE INFORMATION CONTAINED WITHIN THIS DRAWING IS PROPRIETARY AND CONFIDENTIAL. AND IS THE SOLE PROPERTY OF DandR ELECTRONICS CO. LTD. IT MAY NOT BE REPRODUCED AT WHOLE OR IN PART WITHOUT THE WRITTEN PERMISSION OF DandR ELECTRONICS CO. LTD.			DESCRIPTION: Dual slide out cargo system for Ford 2017 F-150	
FINISH Black Midnight Wrinkle			MFG. NO. 934-0799A	CATALOG. NO.
MATERIAL 0.09" / 1/8" THK ALUM			USED ON:	SHEET 3 OF 3
			REV. 0	