



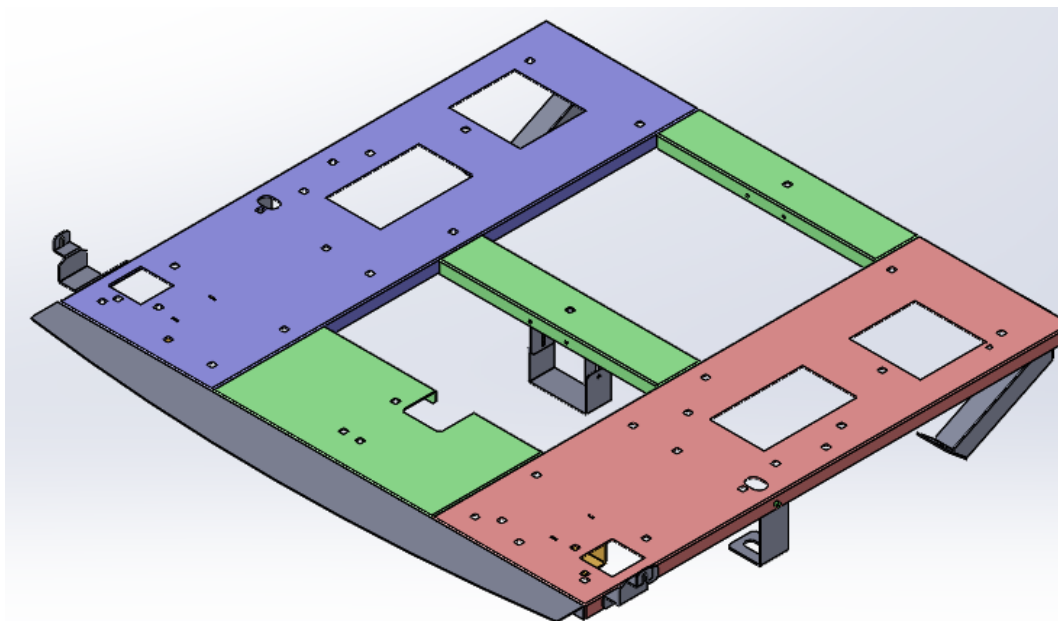
ELECTRONICS CO. LTD.
EMERGENCY VEHICLE SOUND, LIGHTING & EQUIPMENT

Sub-Frame 2018 Expedition 933-0130A

INSTALLATION MANUAL

Contents:

Parts List	2
Installation Instructions	2
Warranty & Product Return Policy	6



PARTS/HARDWARE LIST

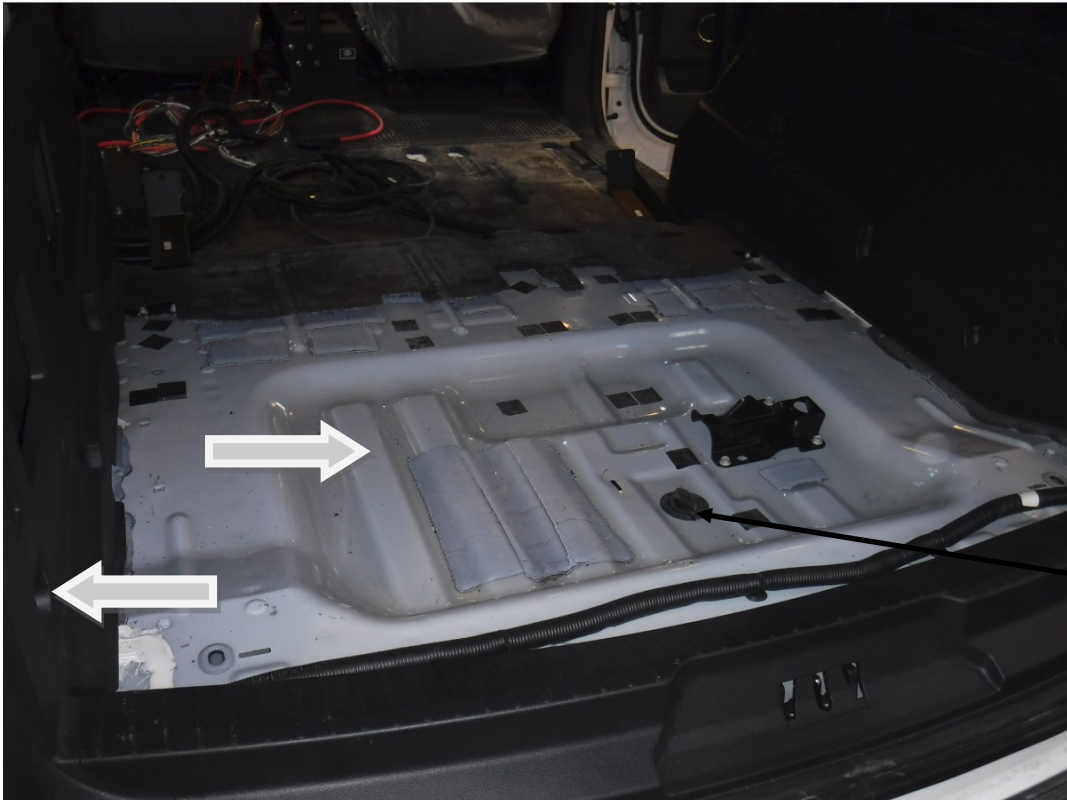
Quantity	Part #	Description
1	933-0130A	2018 Expedition MAX Subframe
10	401-0000	1/4-20 x 3/4" RD Head Bolt
10	403-0005A	1/4-20 Flat Washer
4	422-0009	1/4-20 Nyloc Nut
6	403-0004	1/4-20 Lock Washer
12	401-0053	10-32 x 1/2" RD Head Bolt
12	403-0007A	#10 Flat Washer
12	403-0010	#10 Lock Washer
4	422-0004	#10 Nyloc Nut
4	413-0010	Fender Washer

INSTALLATION INSTRUCTIONS

Step 1

Vehicle Preparation

Remove the entire vehicle storage compartment floor (entire floor exposing metal) and remove side hooks located on both left and right side of the quarter panels. It is recommended to remove and relocate vehicles jack and any other tools located with the spare tire. Location of items to be removed located in figure below.

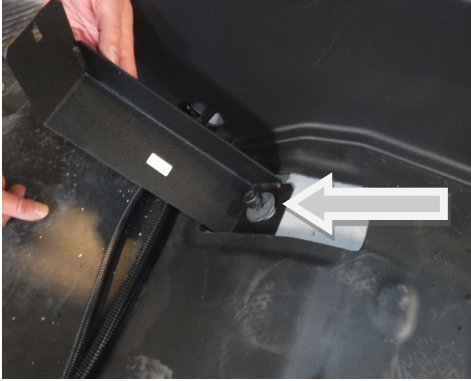


**NOTE: KEEP ALL
FACTORY HARDWARE**

It is recommended to remove cap to spare tire key hole to prevent any future dilemmas when accessing the tire with cabinet in the way.

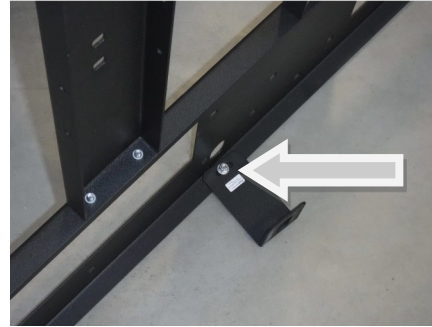
Step 2

Install the back subframe support brackets (which will be located towards the front of the vehicle) using supplied vehicle factory hardware and 2 fender washers. Do not fully tighten brackets. (Brackets are symmetric and are not side specific).



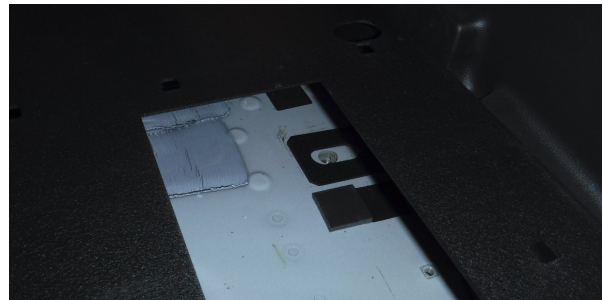
Step 3

Fasten, but do not tighten middle brackets to subframe on left and right sides using 10-32 x 1/2" RD Head Bolt, #10 Flat Washer and #10 Nyloc Nut. Ensure bracket is on inside of subframe flange as seen in the below figures.



Step 4

Place and center subframe into vehicle ensuring the subframe aligns with preinstalled rear brackets and ensuring mid mounting brackets align with vehicle holes. Mid bracket can be adjusted to help alignment of mounting holes. Use front lip spacing to help with proper alignment seen in 3rd & 4th figures below.



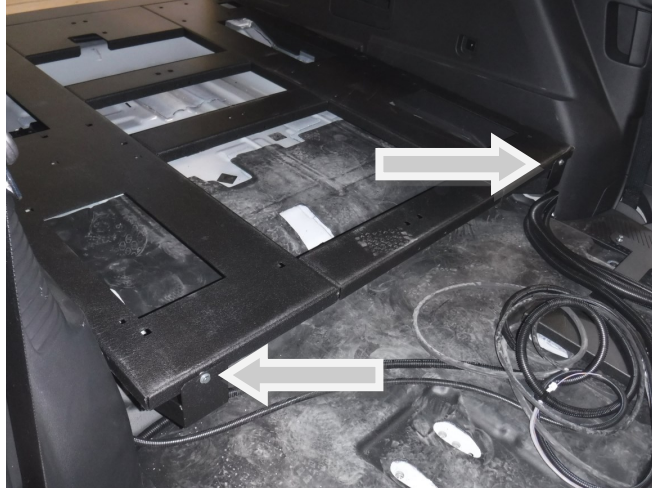
LS



RS

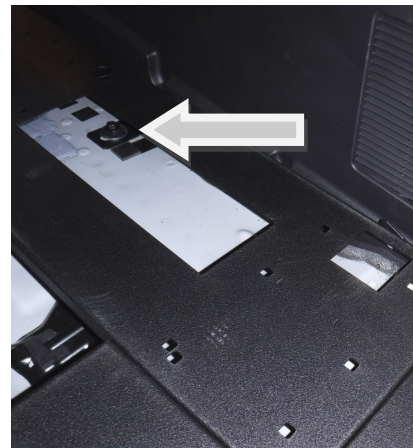
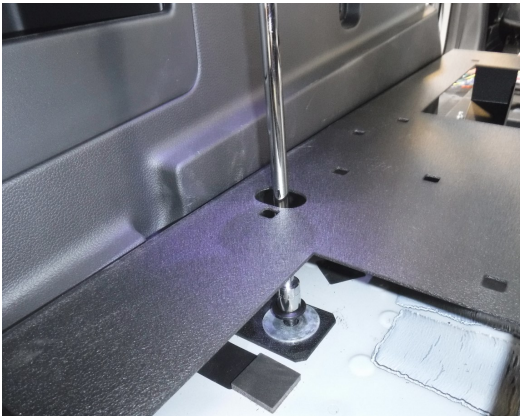
Step 5

Using 1/4-20 x 3/4" RD Head Bolt, 1/4-20 Flat Washer, and 1/4-20 Lock Washer, fasten the subframes rear mount brackets (installed in step 2) to the subframe. Do not fully tighten.



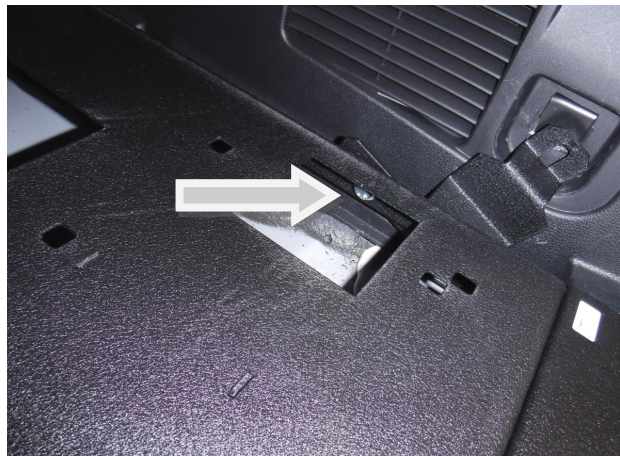
Step 6

Using vehicle factory hardware and fender washer, install middle mount bracket to the vehicle but do not tighten fully to allow for adjustability.



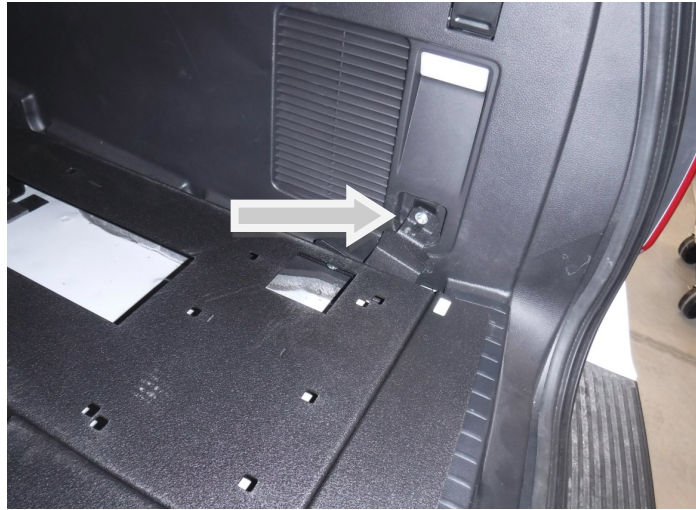
Step 7

Using 10-32 x 1/2" RD Head Bolt, #10 Flat Washer and #10 Lock Washer install front subframe mount brackets on both left and right side of the subframe.



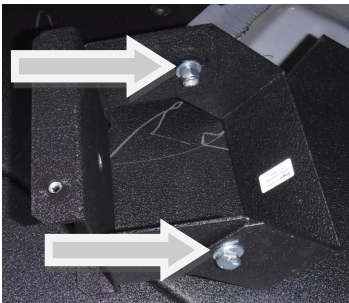
Step 8

Using vehicle factory hardware install the subframe front mount brackets on the left and right side (located at the furthest rear of the vehicle) and do not fully tighten.

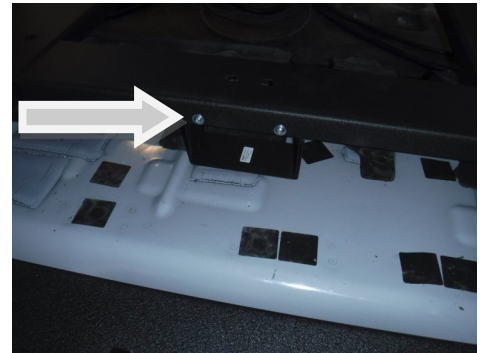
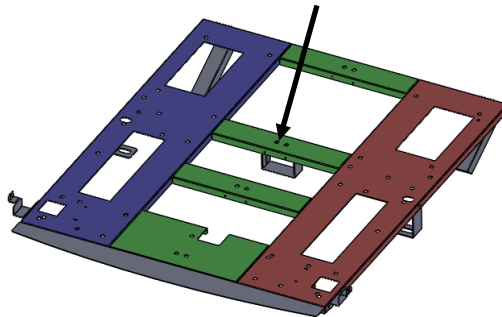


Step 8

Assemble middle support bracket using x2 10-32 x 1/2" RD Head Bolt, #10 Flat Washer and #10 Nyloc Nut in below first figure, and do not fully tighten. Place the bracket under the subframe's 3rd horizontal beam and using x4 10-32 x 1/2" RD Head Bolt, #10 Flat Washer and #10 Lock Washer, secure and tighten bracket to subframe seen in the third figure.



Support bracket location on sub-frame



Step 8

Once all the brackets of been mounted to the subframe and to the vehicle, tighten all the hardware, except the adjustable middle support bracket. Once the subframe is fully tightened and secured, adjust the height of the middle support bracket and tighten the last 2 pieces of hardware. Installation is complete.



WARRANTY

D & R Electronics warrants its new products to be free from defects in material and workmanship, under normal use and service, for a period of one year on parts replacement, and one year on labor. This warranty applies only to original purchasers acquiring the product directly from D&R Electronics, or its authorized dealers. Warranty will not be recognized without proof of purchase or bill of sale. This warranty is not transferable.

The warranty begins on the date of delivery to the first user/purchaser. This warranty shall not apply to products which must be repaired due to normal wear and tear, negligence, improper installation, abuse, misuse, or which have been

altered or modified at a facility other than D & R Electronics, or its authorized depot center. Units proved to be defective within the warranty period, based on an examination by D&R Electronics, will be replaced or repaired at D & R Electronics' option. This warranty does not cover travel expenses or labor charges for removal or installation. Lamps, flash tubes, batteries or other items considered consumables are not covered under warranty.

This warranty is in lieu of all other express warranties. D&R Electronics makes no other warranties, expressed or implied, than the express warranties contained herein.

PRODUCT RETURN POLICY

In order to provide you with faster service, product returns for repair or replacement, must have a **Return Goods Authorization Number (RGA number)**. Please contact our company to obtain a RGA number before you return the product to D & R ELECTRONICS. Write the RGA number clearly on the package. Be sure you use sufficient packing materials to avoid damage to the product being returned while in transit.

D & R ELECTRONICS assumes no responsibility or liability for expenses incurred for the removal and/or the installation of products requiring service and/or repair. Repairing or replacing product is at the discretion of D & R ELECTRONICS.

D&R ELECTRONICS Co. LTD.

CANADA

8820 George Bolton Pkwy.
Bolton, Ontario L7E 2Y4

Tel.: (905)951-9997

Fax: (905)951-0019

USA

2321 Kenmore Ave
Buffalo, NY, 14207

Toll Free 1-800-538-7338

www.dandrelectronics.com