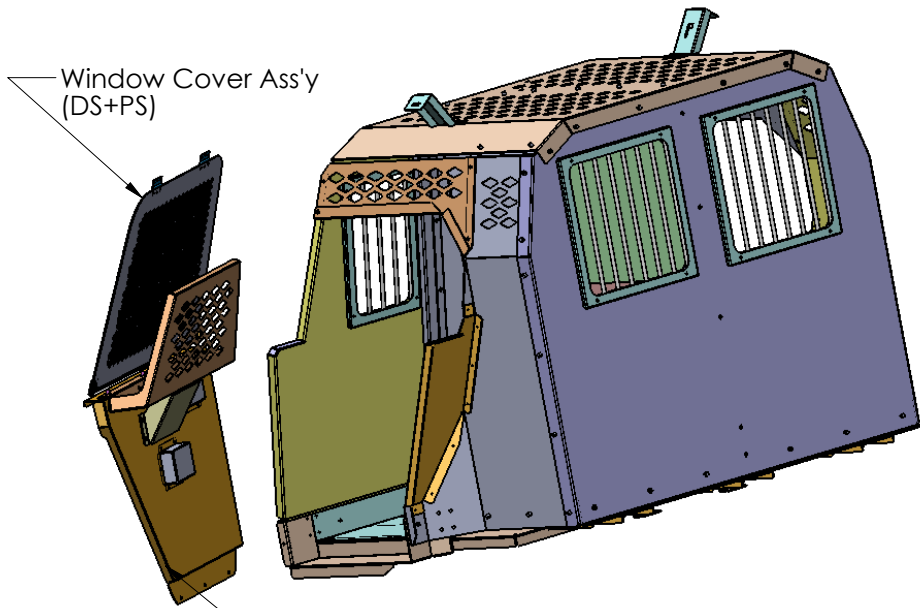
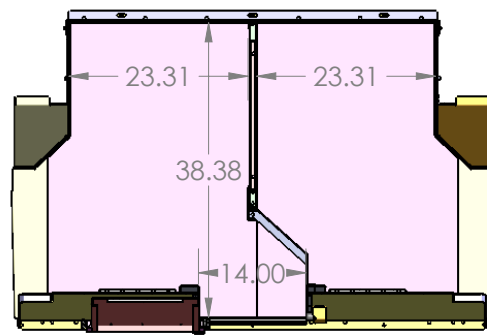
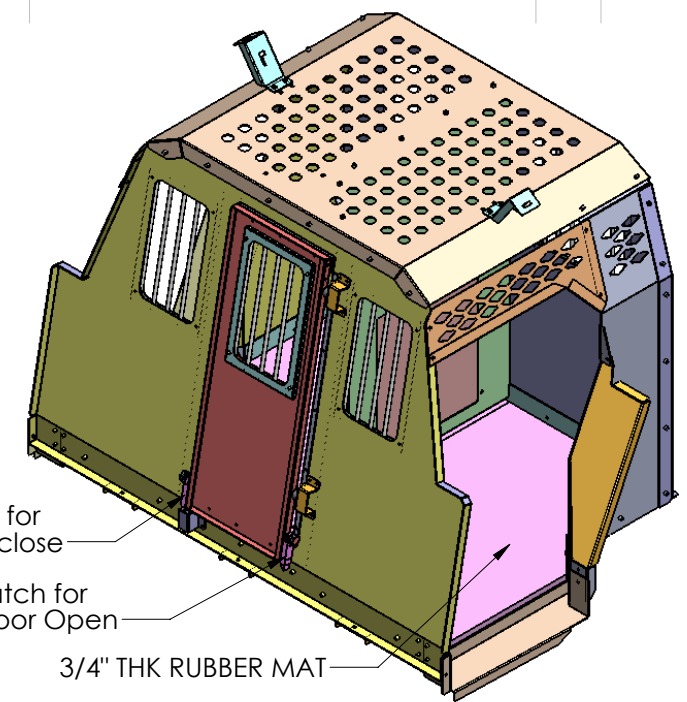


REV.	DESCRIPTION	BY	DATE	APPROVED

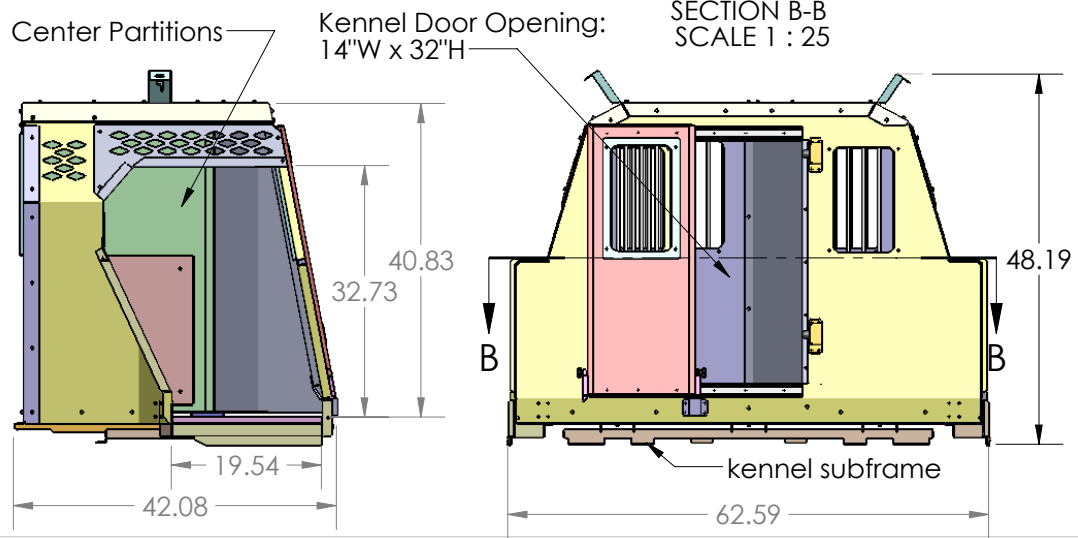


Door Cover Ass'y (DS+PS)



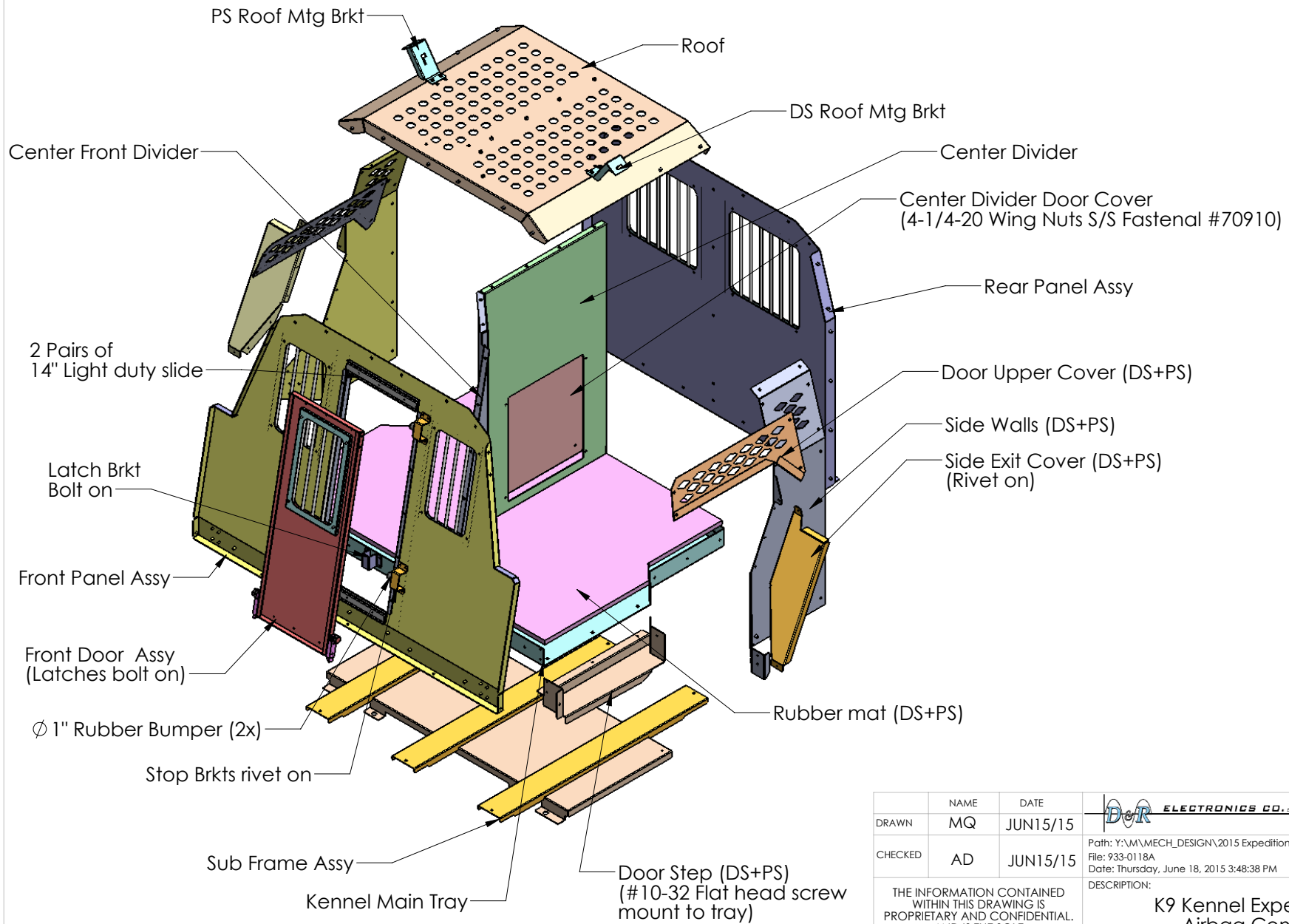
**NOTE:**  
THE PACKAGE SHOULD INCLUDE:  
1. DS&PS DOOR COVERS.  
2. DS&PS WINDOW GUARDS  
3. FAN FOR DS&PS.

One Pair of 14" Light Duty Slide



DRAWN	NAME MQ	DATE JUN15/15	<b>DANDR ELECTRONICS CO., LTD.</b>	DANDR-ANSI-A REV2 APRIL 1, 2009	SIZE <b>A</b>
CHECKED	AD	JUN15/15	Path: Y:\M\MECH_DESIGN\2015 Expedition K9 Kennel Single Door\ File: 933-0118A Date: Thursday, June 18, 2015 3:48:38 PM		
THE INFORMATION CONTAINED WITHIN THIS DRAWING IS PROPRIETARY AND CONFIDENTIAL. AND IS THE SOLE PROPERTY OF DandR ELECTRONICS CO. LTD. IT MAY NOT BE REPRODUCED AT WHOLE OR IN PART WITHOUT THE WRITTEN PERMISSION OF DandR ELECTRONICS CO. LTD.			DESCRIPTION: <b>K9 Kennel Exped 2015XL Airbag Complied</b>		
FINISH Black Midnight Wrinkle			MFG. NO. <b>933-0118A</b>	CATALOG. NO. <b>XXX</b>	SHEET 1 OF 2
MATERIAL 0.125" /0.09" ALUM; 12 GA CRS			REV. <b>0</b>		

REV.	DESCRIPTION	BY	DATE	APPROVED



	NAME	DATE	<b>ELECTRONICS CO., LTD.</b> DANDR-ANSI-A REV2 APRIL 1, 2009	SIZE
DRAWN	MQ	JUN15/15		<b>A</b>
CHECKED	AD	JUN15/15	Path: Y:\M\MECH_DESIGN\2015 Expedition K9 Kennel Single Door\ File: 933-0118A Date: Thursday, June 18, 2015 3:48:38 PM	
THE INFORMATION CONTAINED WITHIN THIS DRAWING IS PROPRIETARY AND CONFIDENTIAL. AND IS THE SOLE PROPERTY OF DandR ELECTRONICS CO. LTD. IT MAY NOT BE REPRODUCED AT WHOLE OR IN PART WITHOUT THE WRITTEN PERMISSION OF DandR ELECTRONICS CO. LTD.			DESCRIPTION: <b>K9 Kennel Exped 2015XL          Airbag Complied</b>	
			MFG. NO. <b>933-0118A</b> USED ON:	CATALOG. NO. <b>XXX</b> SHEET 2 OF 2
FINISH	<b>Black Midnight Wrinkle</b>		MATERIAL <b>0.125" /0.09" ALUM; 12 GA CRS</b>	REV. <b>0</b>