



8820 George Bolton Pkwy
Bolton, On L7E 2Y4
(905) 951-9997

INSTALLATION GUIDE

933-0113A - 2014 Ford Explorer Liftable Subframe & Cabinet

Parts Required:

Hardware Kit

933-0113A Liftable Subframe

934-0739A Cabinet

834-3014A Subframe Cover

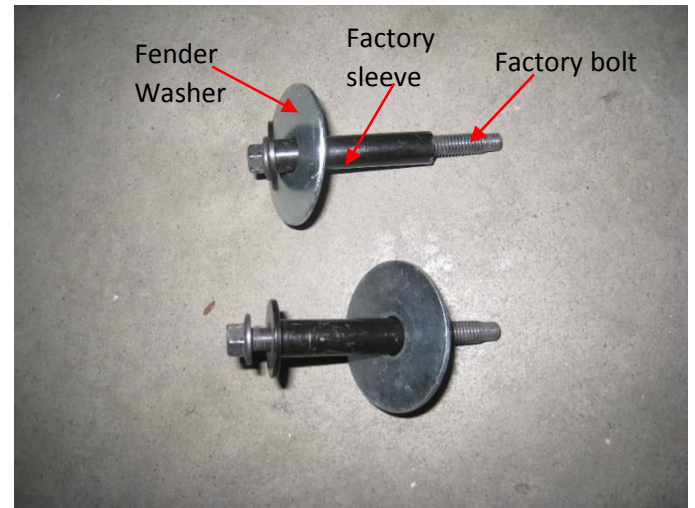
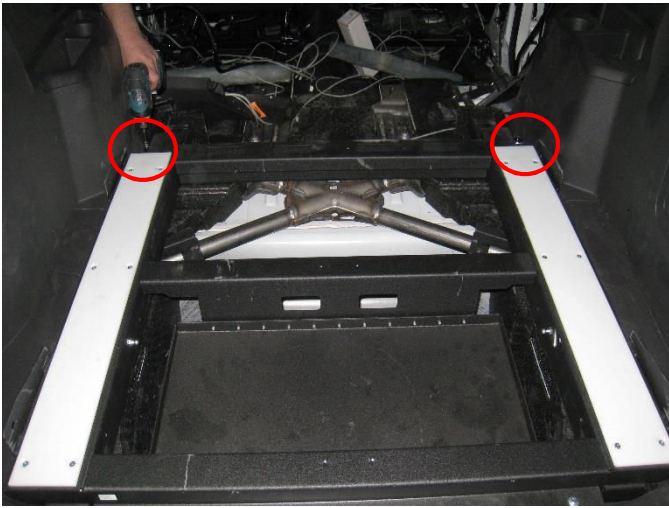
834-2838A Subframe Hat Bracket 2x

834-2839A Cabinet Rear Holding Bracket 2x

1. Remove the *factory bolt* and *sleeve*.



2. Install the *933-0113A liftable subframe* and secure using the *factory bolt* and *sleeve* removed in step 1. Install a *fender washer* on to the *sleeve*.



3. Make sure the plastic sill at the rear hatch is installed before installing the bracket onto the sill. Use a *M6 x 1/2" bolt* with a *washer* to secure the *bracket* to the rear hatch sill of the vehicle.



4. Use two *#10 screws* with a *washer* to secure the *bracket* on the sill to the *bracket* on the *9330113A liftable subframe*.



5. Install the two *brackets* to the *reinforcement brace* and line up the holes. Use four $\frac{1}{4}$ " X 20 X $\frac{3}{4}$ " *length bolts* with a *washer* to secure the *bracket* to the 933-0113A *liftable subframe*. Two *bolts* and two *washers* per side.

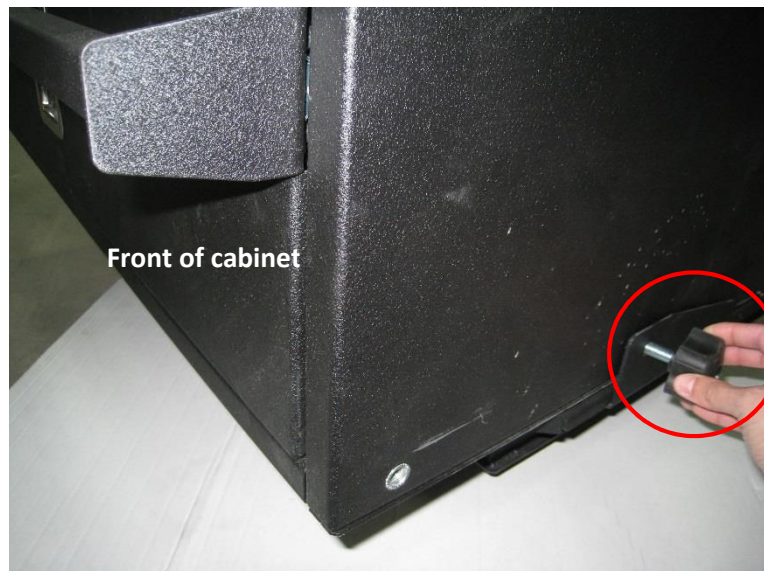


6. Install the *cabinet*. To secure the *cabinet* from sliding, install two $\frac{3}{8}$ star knobs at the side of the 934-0518 cabinet.

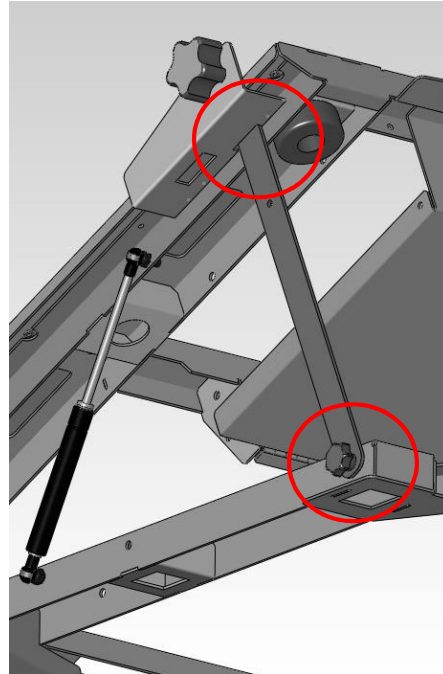
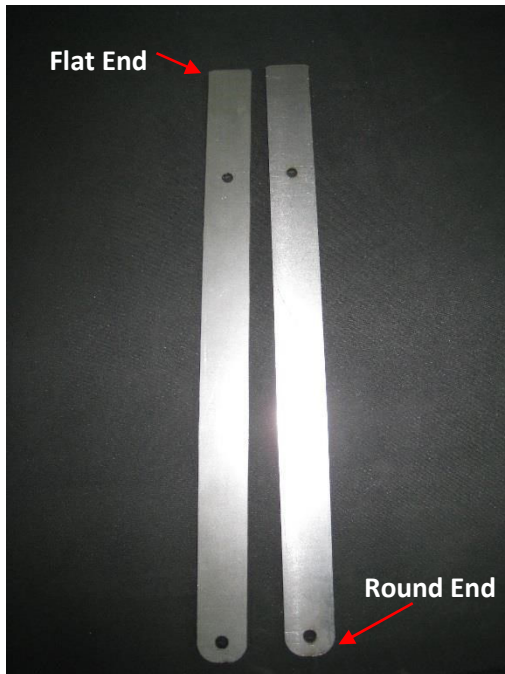


⚠ WARNING

- ⚠** To lift the *cabinet*, ensure that all items stored in the *cabinet* are **removed** prior to lifting. **The cabinet must be empty before lifting.** Slide the *cabinet* forward to line up the second hole on the side of the *cabinet* to the 933-0113A liftable subframe. Install the $\frac{3}{8}$ star knob to secure in place.



- ⚠ Lift the *cabinet* and install the *support bar* one at a time and secure using a $\frac{1}{4}$ " X 20 *star knob*. Slide the flat end of the *support bar* into the slot. The rounded end will match up with the hole on the 933-0113A *liftable subframe*.



⚠ **WARNING**

⚠ Always secure the *cabinet* when lifting. **Serious Injury or death may result if not used.**

