



ELECTRONICS CO. LTD.
EMERGENCY VEHICLE SOUND, LIGHTING & EQUIPMENT

Installation and Operation Instructions SL12IL-X, SL12IL-X/Y Hide-A-Luminous LED

D&R ELECTRONICS CO. LTD.

http://www.dandrelectronics.com
Tel: 800-538-7338 / Fax: 905-951-0019
8820 George Bolton Pkwy.
Bolton, Ontario L7E 2Y4

Available Colors: B: BLUE / R: RED / A: AMBER / C: CLEAR / G: GREEN / P: PURPLE

IMPORTANT: Please read all of the following instructions before installing your new SL12IL series Hide-A-Luminous LED.

WARNING!!!! Failure to install or use this product according to manufacturer's recommendations may result in property damage, serious injury, and/or death to those you seek to protect!

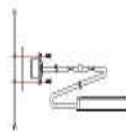
- *Proper installation of this product requires the installer to have a good understanding of automotive electronics, systems and procedures.
 - *This product contains high-intensity LEDs. Do not stare directly into these lights. Momentary blindness and/or eye damage could result.
 - *Use only soap and water to clean the outer lens.
 - *Do not install this product or route any wires in the deployment area of your air bag. Equipment mounted or located in the air bag deployment area will damage or reduce the effectiveness of the air bag, or become a projectile that could cause serious personal injury or death. Refer to your vehicle owner manual for the air bag deployment area. The User/Installer assumes full responsibility to determine proper mounting location, based on providing ultimate safety to all passengers inside the vehicle.
 - *If mounting this product requires drilling holes, the installer must be sure that no vehicle components or other vital parts could be damaged by the drilling process. Check both sides of the mounting surface before drilling begins. Also de-burr any holes and remove any metal shards or remnants. Install grommets into all wire passage holes.
 - *Inspect and operate this product regularly to confirm its proper operation and mounting condition. Do not use a pressure washer to clean this product.
 - *For this product to operate at optimum efficiency, a good electrical connection to chassis ground must be made. The recommended procedure requires the product ground wire to be connected directly to the NEGATIVE (-) battery post.
 - *It is recommended that these instructions be stored in a safe place and referred to when performing maintenance and/or reinstallation of this product.
 - *FAILURE TO FOLLOW THESE SAFETY PRECAUTIONS AND INSTRUCTIONS COULD RESULT IN DAMAGE TO THE PRODUCT OR VEHICLE AND/OR SERIOUS INJURY TO YOU AND YOUR PASSENGERS!
- If this product uses a remote device to activate or control this product, make sure that this control is located in an area that allows both the vehicle and the control to be operated safely in any driving condition.
Do not attempt to activate or control this device in a hazardous driving situation.

The SL12IL series Flash Pattern

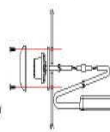
- P1: Single 120 FPM Ph1-Color 1&2
- P2: Single 120 FPM Ph2-Color 1&2
- P3: Single 120 FPM Ph1-Color 1
- P4: Single 120 FPM Ph2-Color 2
- P5: Single 120 FPM Alt. Color 1<->2
- P6: Single 300 FPM Ph1-Color 1&2
- P7: Single 300 FPM Ph2-Color 1&2
- P8: Single 300 FPM Ph1-Color 1
- P9: Single 300 FPM Ph2-Color 2
- P10: Single 300 FPM Alt. Color 1<->2
- P11: Single 75 FPM Ph1-Color 1&2
- P12: Single 75 FPM Ph2-Color 1&2
- P13: Single 75 FPM Alt. Color 1<->2
- P14: Double 75 FPM Ph1-Color 1&2
- P15: Double 75 FPM Ph2-Color 1&2
- P16: Double 75 FPM Alt. Color 1<->2
- P17: Double 120 FPM Ph1-Color 1&2
- P18: Double 120 FPM Ph2-Color 1&2
- P19: Double 120 FPM Alt. Color 1<->2
- P20: Triple 85 FPM Ph1-Color 1&2
- P21: Triple 85 FPM Ph2-Color 1&2
- P22: Triple 85 FPM Ph1-Color 1
- P23: Triple 85 FPM Ph2-Color 2
- P24: Triple 85 FPM Alt. Color 1<->2
- P25: Quad 120 FPM Ph1-Color 1&2
- P26: Quad 120 FPM Ph2-Color 1&2
- P27: Quad 120 FPM Ph1-Color 1
- P28: Quad 120 FPM Ph2-Color 2
- P29: Quad 120 FPM Alt. Color 1<->2
- P30: Quint 120 FPM Ph1-Color 1&2
- P31: Quint 120 FPM Ph2-Color 1&2
- P32: Quint 120 FPM Ph1-Color 1
- P33: 2 Double 75 FPM, 4 Quad 120 FPM
- P34: Modul. Flash Color 1<->2
- P35: AutoRun
- P36: STEADY BURN
- P37: OFF

Specification	SL12IL SERIES
Input Voltage	10-14.5VDC
Input Current	2.5 Amps max
Output Power	New generation Led*12(One Head)
Waterproof	IP67

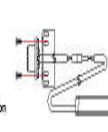
Standard Mount



Flange Mount



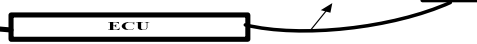
L Bracket Mount



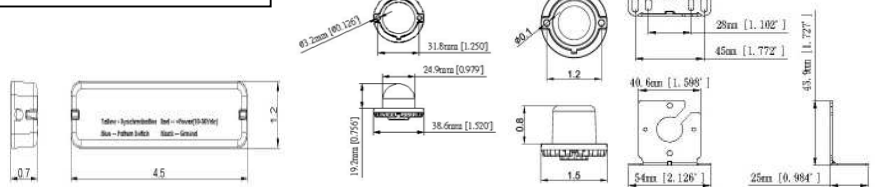
A. Flasher Input Wire 270cm UL 4C Cable
B. Flasher Output Wire 90cm UL 4C Cable

A. Input Wire 270cm UL 4C Cable

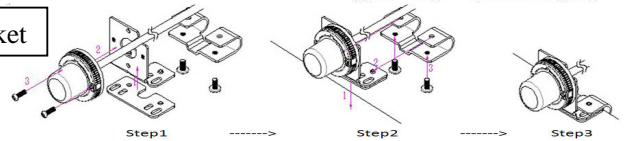
B. Output Wire 90cm UL 4C Cable



Dimensions(inches)



L Bracket AND C Bracket



P1: SINGLE 120 Flash P1(Sync) is **Factory Default**.

Phase Operation: Ph1= Phase 1 / Ph2=Phase 2
Phase 1 (Ph1) flashes simultaneously with Ph1
Phase 2 (Ph2) flashes simultaneously with Ph2
Ph1 alternates with Ph2

Option Function

Stop/Turn/Brake/Tail Light are designed with one pattern
P1: Steady Burn

WIRE:

RED: Positive (need to add 3A Fuse)

BLACK: Negative

BLUE: Pattern Switch

YELLOW: Synchronized Function

WHITE: Stop/Turn/Brake/Tail Light Switch(Option)

*Maximum of 8 SL12IL series be synchronized

OPERATION

Apply BLUE TO BLACK wire:

-Less than 1 sec. for next pattern

-between 1-3 sec. for previous pattern

-between 3-5 sec. for Factory Default(P1)

-more than 5 sec. for turn off and reset to P1

Apply WHITE TO RED (+) wire: (Option)

- Stop/Turn/Brake/Tail Light Steady Burn pattern

Inspect the contents to be certain that the following items are included:

A. ECU with Light Head B. Hards Kit C. Manual

Recommend Operation Environment

Ambient Temperature: -30 to 50°C Relative Humidity: 10 to 85% , non-condensing

Trouble Shooting

The SL12IL series has been factory tested and approved. If the functions of device fail, please check the followings:

1. After connecting with the power supply, be sure that the power source end is joined in correct way. And then, make sure that there is no short-circuited power occurring.
2. Ensure Power switch is turned to "ON" position.
3. Press the Pattern Switch to be sure the "OFF" pattern is not selected. If the blue wire touches black wire over 5 seconds, it would switch to OFF pattern. It would be lighted up again when using blue wire touches black wire less than 1 second