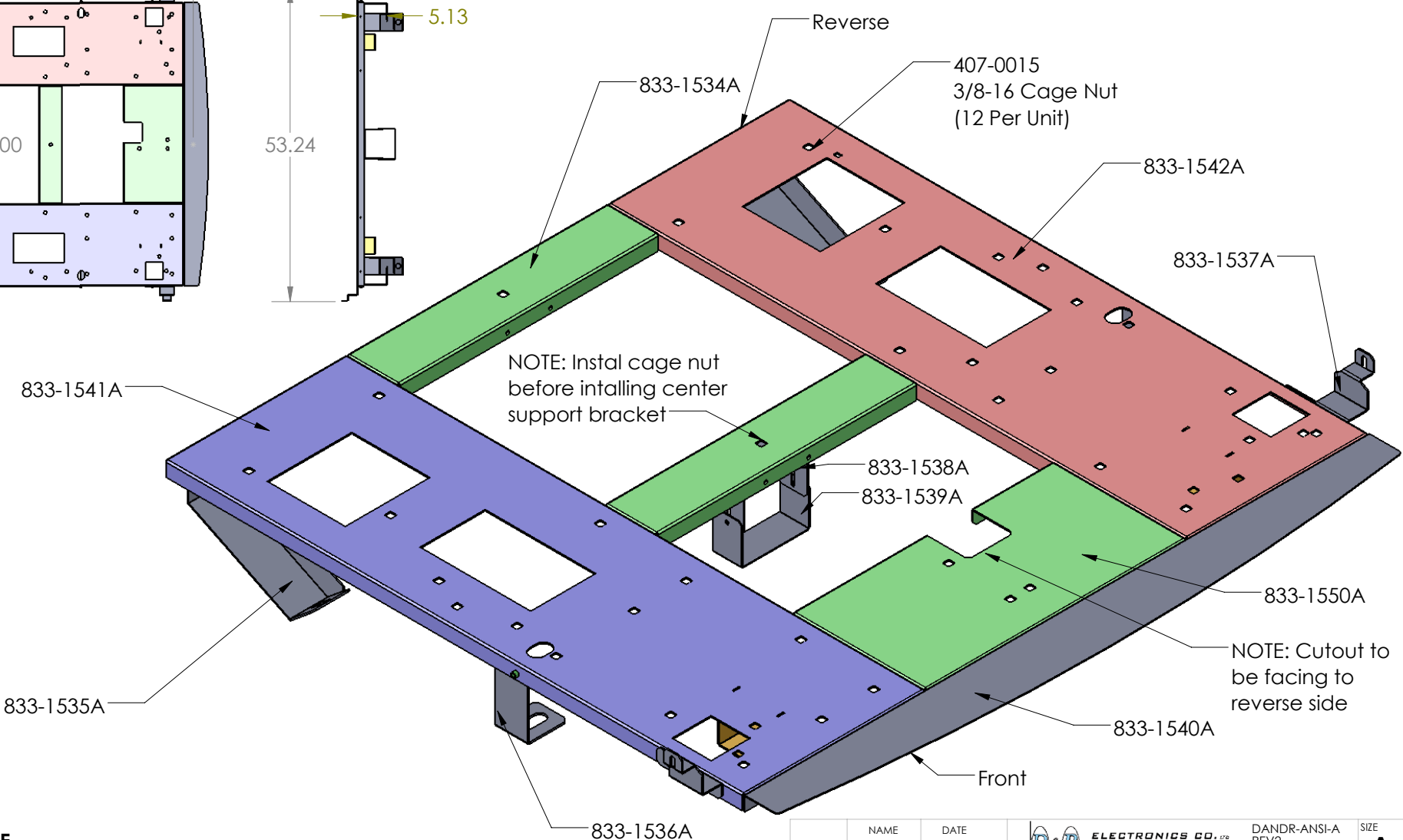
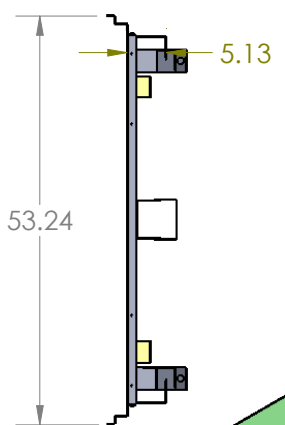
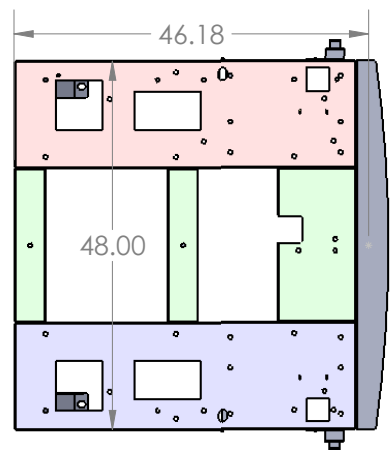


REV.	DESCRIPTION	DCR	BY	DATE	APPROVED
------	-------------	-----	----	------	----------



NOTE: Instal cage nut before intalling center support bracket

NOTE: Cutout to be facing to reverse side

HARDWARE

	Description	Part Number	Quantity
1	1/4-20 x 3/4" RD Head Bolt	401-0000	10
2	1/4-20 Flat Washer	403-0005A	10
3	1/4-20 Nyloc Nut	422-0009	4
4	1/4-20 Lock Washer	403-0004	6
5	10-32 x 1/2" RD Head Bolt	401-0053	6
6	#10 Flat Washer	403-0007A	6
7	#10 Flat Washer	403-0010	6

DRAWN	NAME MS	DATE 19MAR18	DANDR ELECTRONICS CO., LTD. DANDR-ANSI-A REV2 APRIL 1, 2009	SIZE A
CHECKED	AD	19MAR18		Path: Y:\M\MECH_DATA\933 Storage Drawers\933-0130A - 2018 Ford Expedition Subframe\ File: 933-0130A Date: April-12-18 9:12:16 AM DESCRIPTION: 2018 Expedition Subframe
THE INFORMATION CONTAINED WITHIN THIS DRAWING IS PROPRIETARY AND CONFIDENTIAL. AND IS THE SOLE PROPERTY OF DANDR ELECTRONICS CO. LTD. IT MAY NOT BE REPRODUCED AT WHOLE OR IN PART WITHOUT THE WRITTEN PERMISSION OF DANDR ELECTRONICS CO. LTD.			MFG. NO. 933-0130A	CATALOG. NO. XXX
			USED ON: 9XX-XXXX	SHEET 1 OF 1
FINISH MIDNIGHT BLACK WRINKLE			MATERIAL XXGa CRS	REV. 0