

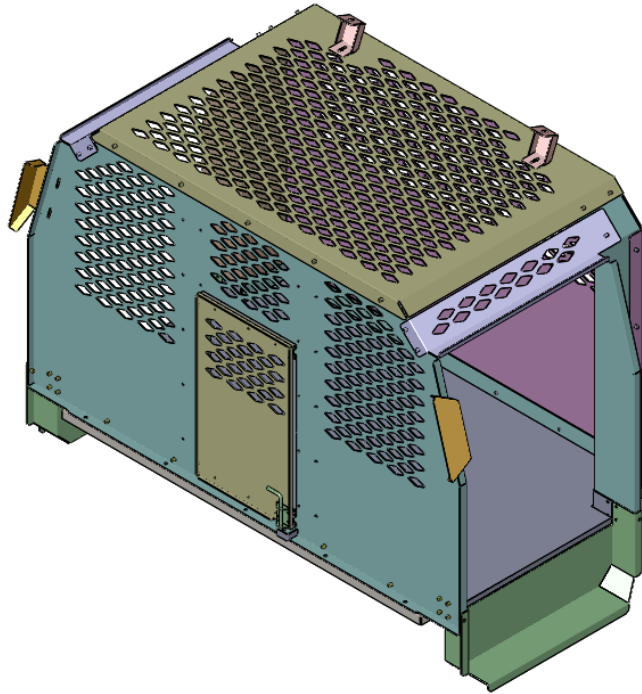


**ELECTRONICS CO. LTD.**  
EMERGENCY VEHICLE SOUND, LIGHTING & EQUIPMENT

# Ford F-250 K9 Kennel

P/N 934-0723A

## INSTALLATION MANUAL



### CONTENTS

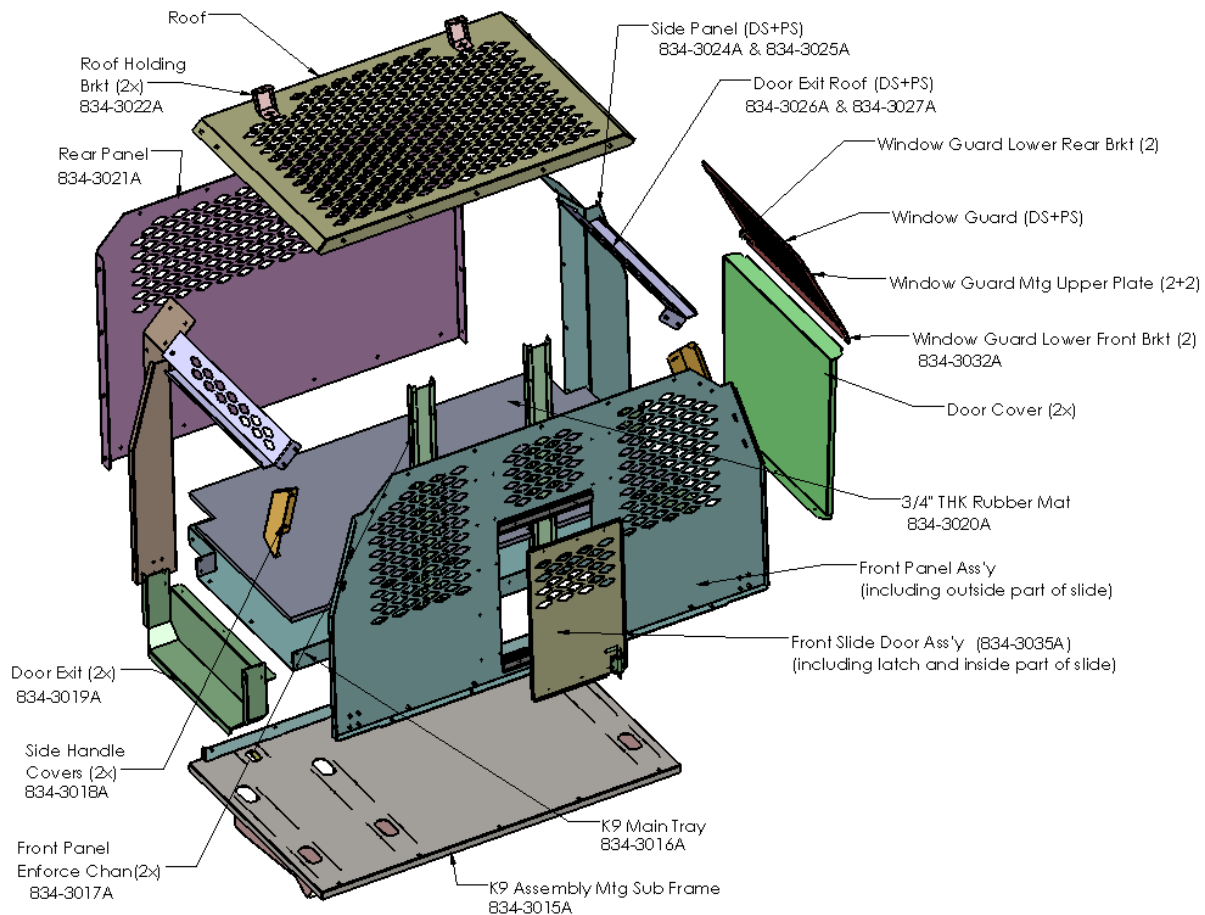
Unpacking	—	2
Installation	—	3
Warranty	—	11
Return Policy	—	11

## UNPACKING

Before beginning any installation, unpack the equipment received. After unpacking, examine **ALL** components received for any damage that may have occurred while in transit. If any damage has occurred, file a claim **IMMEDIATELY** with the courier stating the extent of damage. Check **ALL** envelopes, packing slips, shipping labels and tags before removing or destroying them. To ensure your satisfaction, open all cartons and report any shortages **within 48 hours of receipt.**

### HARDWARE PARTS LIST

Quantity	Description
6	SCREW, 10-32 x 1/2 FLAT HEAD
85	WASHER, 1/4 FLAT, SAE, ZINC
85	LOCK WASHER, 1/4 SAE, ZINC
85	BUTTON HEAD SCREW, 1/4-20 x 3/4"
2	CARRIAGE BOLT , 1/4-20 x 1"
2	FLAT WASHER, 1/4-20
2	NYLOCK NUT, 1/4-20
20	LOCK WASHER, #10
20	WASHER, # 10 FLAT,
20	RD HEAD SCREWS #10-32 x 1/2"
2	FENDER WASHER #10
22	3/16" GP 3/8"L ALUM RIVETS



## VEHICLE PREPARATION

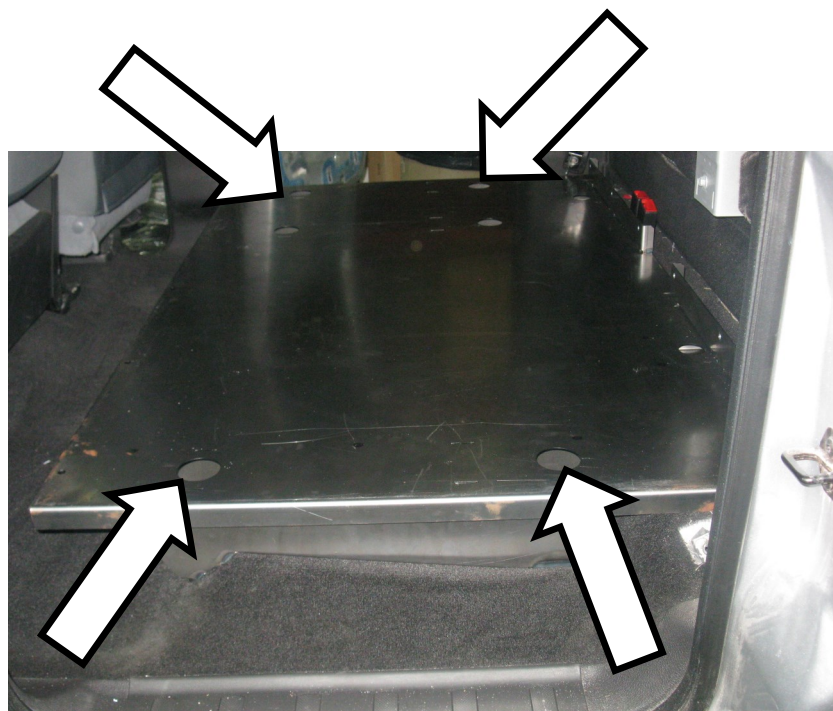
Remove the 2 rear seats and set aside. Some Plastic floor panels may require removal as well. The removed seat bolts will be used to fasten the sub-frame to the floor. Remove Passenger Side Rear door panels and set aside. The Door Locks may require disassembly in order to tuck away door lock rods.

Contact D&R if you are unsure how to remove the Seats or Door Panels.

## INSTALLATION OF K9 UNIT

### Step 1 Sub-frame into Vehicle

Place sub-frame over the seat mount holes. Use supplied fender washers to level sub-frame. Center the sub-frame & secure using factory seat Bolts.





## Step 2

### Floor Panel to Sub-frame

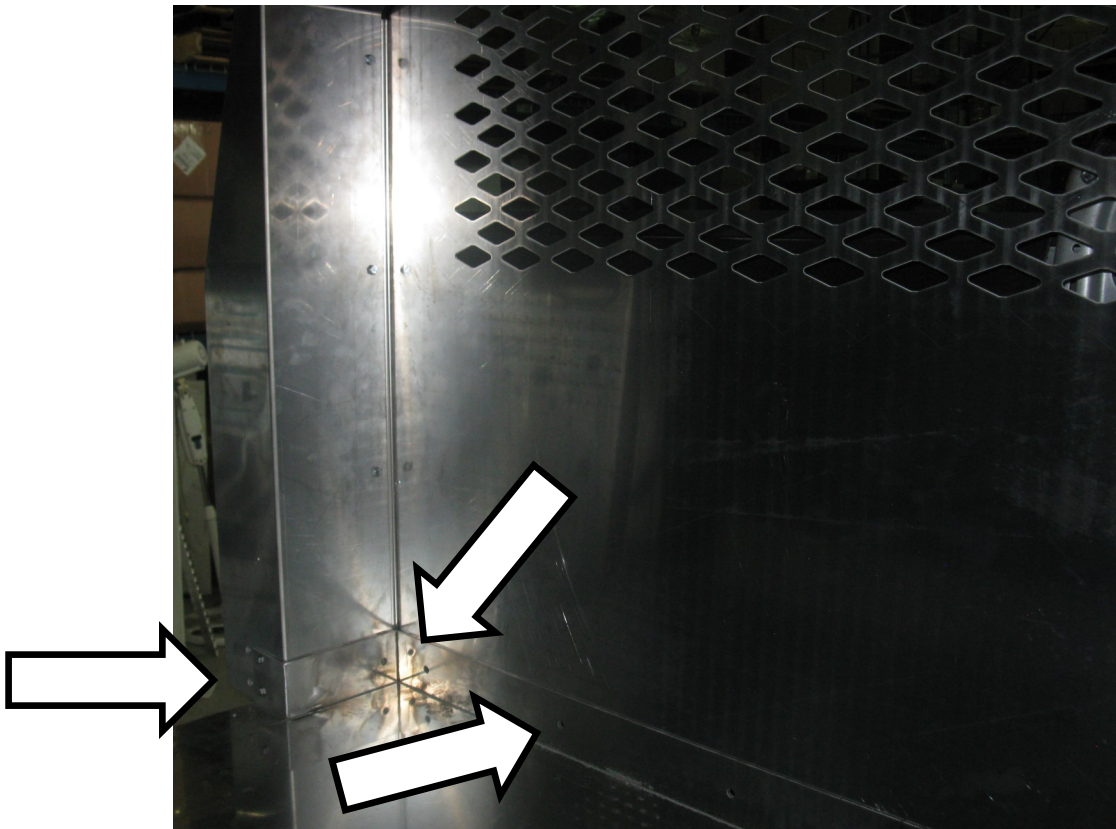
Place Floor panel on sub-frame. Do not secure.



## Step 3

### Back Panel and Side Panel to Floor Panel & Sub-frame

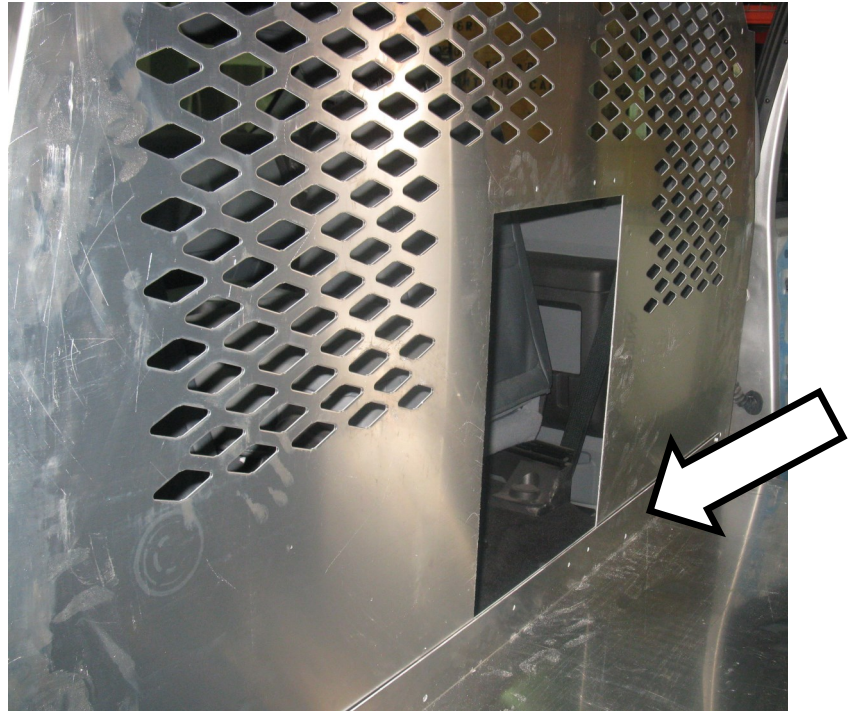
Place Back panel and both side panels on sub-frame and secure with Sub-frame and Floor Panel using 1/4-20 -3/4" Button head screw, 1/4" Lock Washer and 1/4" Flat Washer.



## Step 4

### Front Panel to Floor Panel & Sub-frame

Place Front Panel on Sub-frame and secure using 1/4-20-3/4" Round Head Bolt. Secure Front Panel to Floor Panel using 1/4-20-3/4" Button head screw, 1/4" Lock Washer and 1/4" Flat Washer.



## Step 5

### Remove roof hooks

Remove the hooks on the roof at the rear end of the cabin as shown below





## Step 6

### Roof Panel to Front Panel, Back Panel and Side Panels

Place Roof Panel on Back Panel and Front Panel and secure using 1/4-20-3/4" Button head screw, 1/4" Lock Washer and 1/4" Flat Washer



## Step 7

### Install Roof Holding Brackets

Place Roof Holding Bracket on the roof and align it with hole for the hook and the roof panel. Secure to roof and roof panel using factory screw for the hook and 1/4-20 carriage bolts and nut.



## Step 8 Side Steps

Insert Side Steps both sides and secure with Floor Panel using #10-32 x 1/2" Flat Head Screw. Secure with Front Panel and Side panels using #10-32 x 1/2" Screw, #10 Lock Washers and # 10 Flat Washers.



## Step 9 DS & PS Side Covers

Place DS Side Cover and secure to Front Panel and Side Panel using 1/4-20 x 3/4" Button head screw, 1/4" Lock Washer and 1/4" Flat Washers. Repeat for PS Side.





## Step 10

### DS & PS Side handle Covers

Place DS Side Handle Cover and secure to Front Panel using 1/4-20 x 3/4" Button head screw, 1/4" Lock Washer and 1/4" Flat Washers. Repeat for PS Side.



## Step 11

### Mounting Sliding Doors

The sliding door comes pre-installed with the slides required. Align the sliding door with the front panel, remove nylock nuts from the slides and install to the front panel (use regular 1/4-20 Nylock nuts on top slide to front panel and low profile 1/4-20 Nylock Nuts on bottom slide to front panel). Carefully slide the front door panel onto the front panel. Ensure smooth movement and latch functioning.

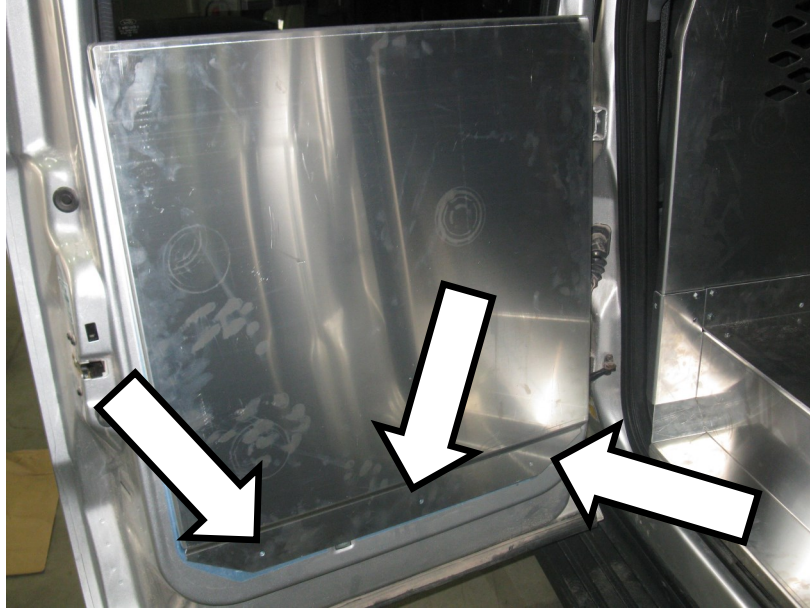




## Step 12

### Door Cover Panel to DS Door

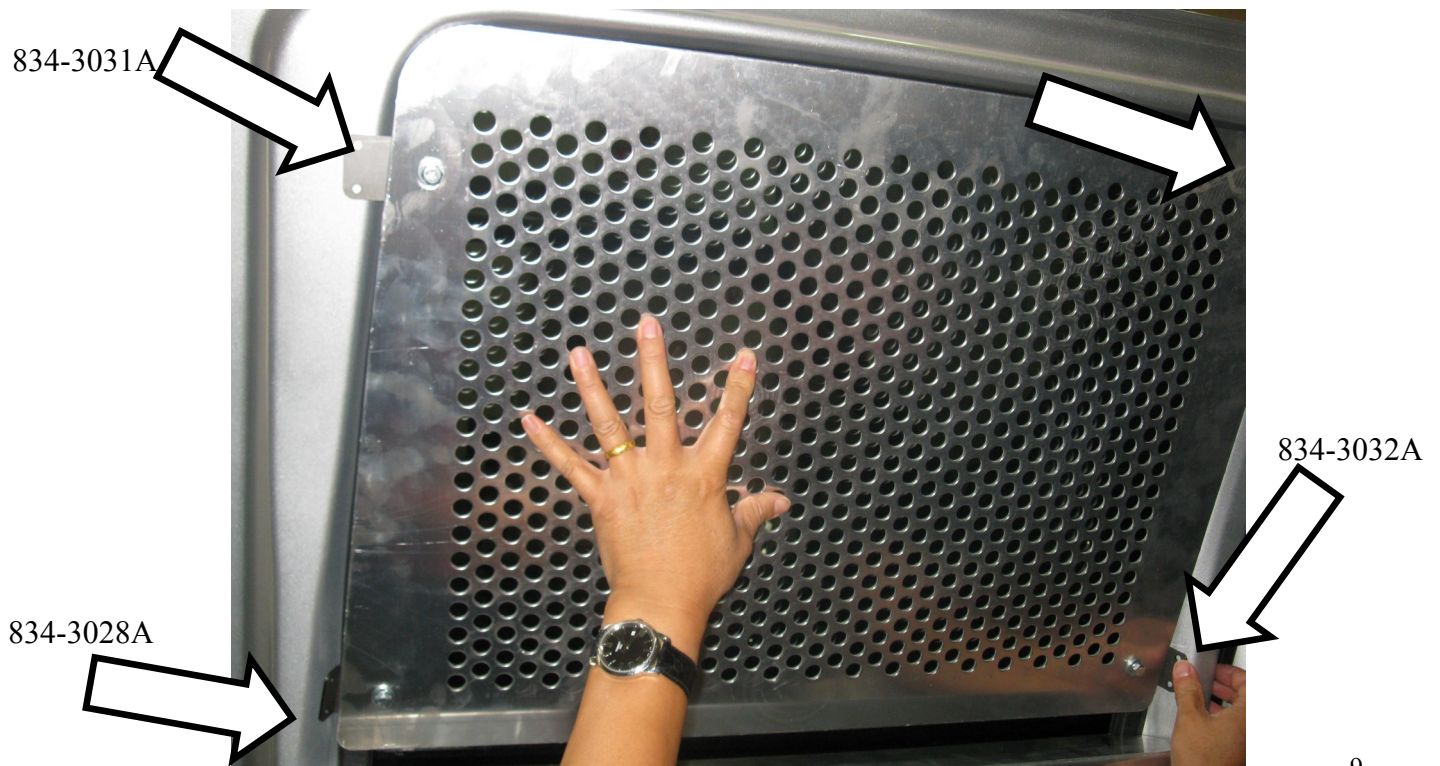
Ensure that the window switch is connected, speaker removed and locking rod folded away before installing the door cover. Slide the Door cover on and mark the holes to be drilled for 3/16 rivets. Rivet and secure the Door Cover Panel in place. Repeat for PS Side.



## Step 13

### Window Guard

Place the supplied window guard. Adjust and mark holes to be drilled for 3/16 rivets and rivet the window guard in place. Adjust the mounting brackets, if required.



## Step 14

### Rubber Matting

Place Rubber Matting in Vehicle. **CAUTION HEAVY LIFTING REQUIRED.**

The Installation procedure is now complete. Please contact D&R Electronics if you require further assistance or would like a soft copy of this publication.

### Note

#### Front Panel Enforce Chan

The front panel enforce chan comes pre-installed onto the front panel for customer's ease of assembly.





## WARRANTY

D & R Electronics warrants its new products to be free from defects in material and workmanship, under normal use and service for a period of one year on parts replacement and one year on labor. This warranty applies only to original purchasers acquiring the product directly from D&R Electronics, or its authorized dealers. Warranty will not be recognized without proof of purchase or bill of sale. This warranty is not transferable. The warranty begins on the date of delivery to the first user/purchaser. This warranty shall not apply to products which must be repaired due to normal wear and tear, negligence, improper installation, abuse, misuse, or which have been altered or modified at a facility other than D & R Electronics, or its authorized depot centers. Units proved to be defective within the warranty period, based on an examination by D&R Electronics, will be replaced or repaired at D & R Electronics' option. This warranty does not cover travel expenses or labor charges for removal or installation. Lamps, flash tubes, batteries or other items considered consumables are not covered under warranty. This warranty is in lieu of all other express warranties. D&R Electronics makes no warranties, expressed or implied, other than the express warranties contained herein.

## PRODUCT RETURN POLICY

In order to provide you with faster service, product returns for repair or replacement, must have a **Return Goods Authorization Number (RGA number)**. Please contact our company to obtain a RGA number before you return the product to D & R ELECTRONICS. Write the RGA number clearly on the package. Be sure you use sufficient packing materials to avoid damage to the product being returned while in transit. D & R ELECTRONICS assumes no responsibility or liability for expenses incurred for the removal and/or the installation of products requiring service and/or repair. **Repairing or replacing product is at the discretion of D & R ELECTRONICS.**

### D&R ELECTRONICS Co. LTD.

#### CANADA

8820 George Bolton Pkwy.  
Bolton, Ontario L7E 2Y4

Tel.: (905)951-9997  
Fax: (905)951-0019

#### USA

2321 Kenmore Ave  
Buffalo, NY, 14207

Toll Free 1-800-538-7338

[www.dandrelectronics.com](http://www.dandrelectronics.com)