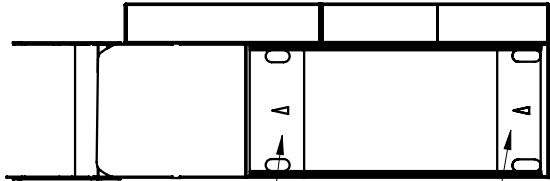
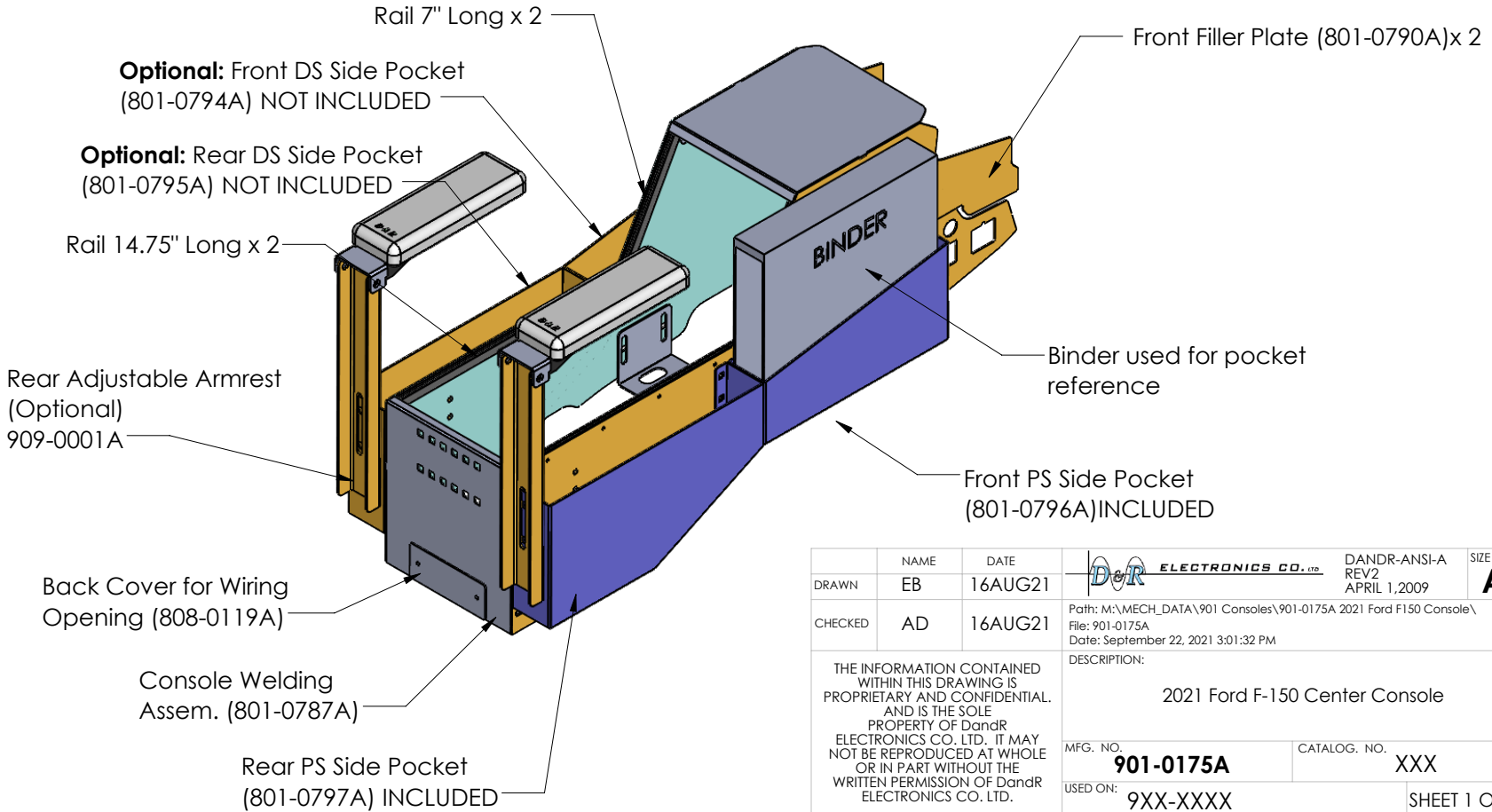
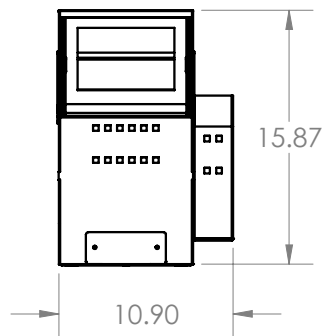
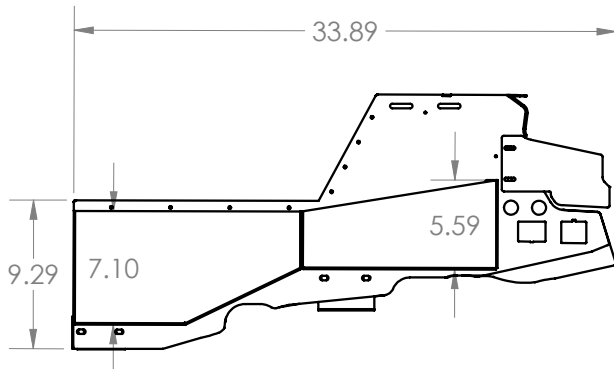


REV.	DESCRIPTION	DCR	BY	DATE	APPROVED
------	-------------	-----	----	------	----------



Front Mounting Bracket  
(801-0788A)

Rear Mounting Bracket  
(801-0789A)



Rail 7" Long x 2

**Optional:** Front DS Side Pocket  
(801-0794A) NOT INCLUDED

**Optional:** Rear DS Side Pocket  
(801-0795A) NOT INCLUDED

Rail 14.75" Long x 2

Rear Adjustable Armrest  
(Optional)  
909-0001A

Back Cover for Wiring  
Opening (808-0119A)

Console Welding  
Assem. (801-0787A)

Rear PS Side Pocket  
(801-0797A) INCLUDED

Front Filler Plate (801-0790A)x 2

Binder used for pocket  
reference

Front PS Side Pocket  
(801-0796A) INCLUDED

DRAWN	NAME EB	DATE 16AUG21	<b>ELECTRONICS CO., LTD.</b>	DANDR-ANSI-A REV2 APRIL 1, 2009	SIZE <b>A</b>
CHECKED	AD	16AUG21	Path: M:\MECH_DATA\901 Consoles\901-0175A 2021 Ford F150 Console\ File: 901-0175A Date: September 22, 2021 3:01:32 PM		
THE INFORMATION CONTAINED WITHIN THIS DRAWING IS PROPRIETARY AND CONFIDENTIAL. AND IS THE SOLE PROPERTY OF DandR ELECTRONICS CO. LTD. IT MAY NOT BE REPRODUCED AT WHOLE OR IN PART WITHOUT THE WRITTEN PERMISSION OF DandR ELECTRONICS CO. LTD.			DESCRIPTION:  2021 Ford F-150 Center Console		
FINISH Black Midnight Wrinkle			MFG. NO. <b>901-0175A</b>	CATALOG. NO. <b>XXX</b>	
			USED ON: <b>9XX-XXXX</b>	SHEET 1 OF 1	
			MATERIAL <b>XXga CRS</b>	REV. <b>0</b>	