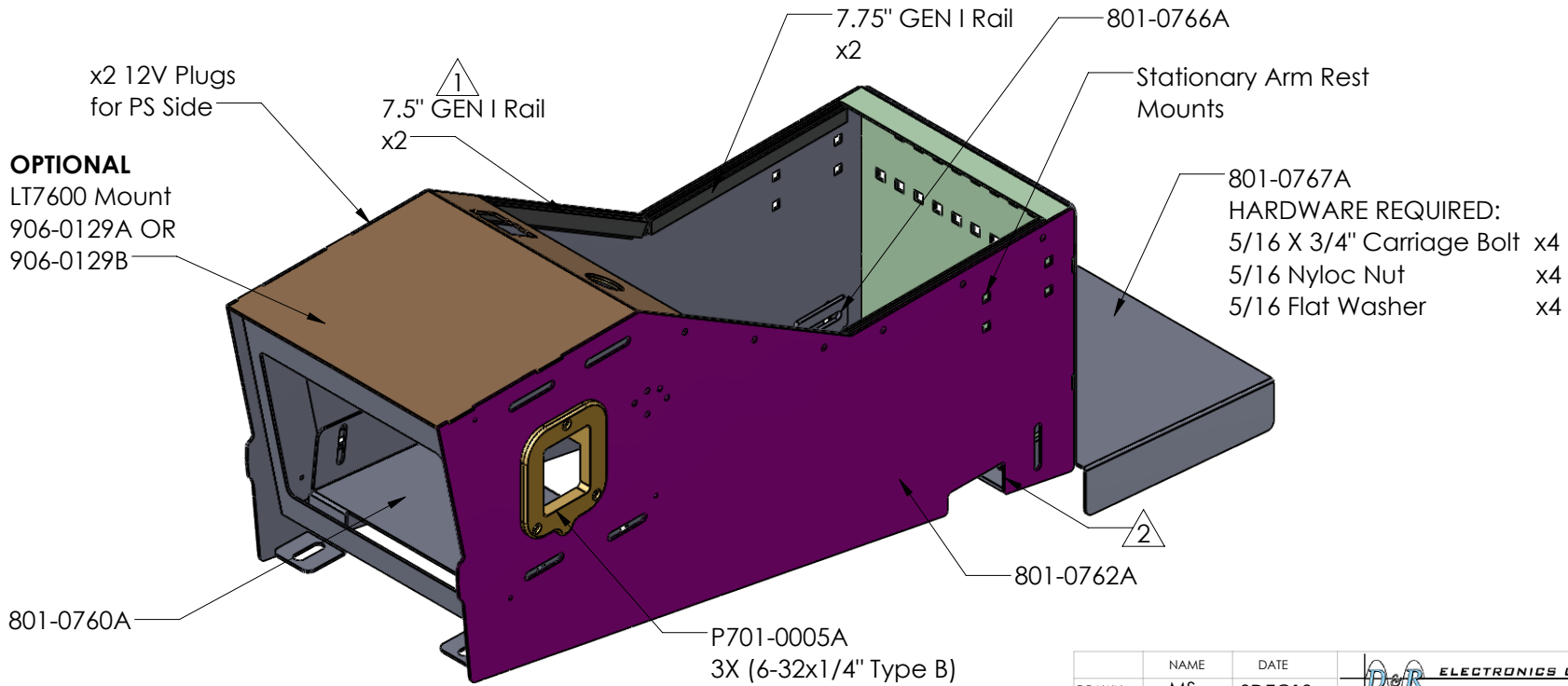


REV.	DESCRIPTION	DCR	BY	DATE	APPROVED
1	Added cutout for wiring	M1048	EB	19FEB20	AD
2	Extended the top rail from 7.25 to 7.75	M1049	EB	19FEB20	AD



OPTIONAL
LT7600 Mount
906-0129A OR
906-0129B

801-0767A
HARDWARE REQUIRED:
5/16 X 3/4" Carriage Bolt x4
5/16 Nyloc Nut x4
5/16 Flat Washer x4

HARDWARE

	Description	Part Number	Quantity
1	6-32 x 1/4" TYPE B	401-0018A	10

NAME	DATE	DandR ELECTRONICS CO., LTD.		DANDR-ANSI-A REV2 APRIL 1, 2009	SIZE A
DRAWN MS	3DEC19	Path: M:\MECH_DATA\901 Consoles\901-0165B - 2020 Utility Short Contour Console\			
CHECKED AD	3DEC19	File: 901-0165B Date: Monday, March 02, 2020 12:51:24 PM			
THE INFORMATION CONTAINED WITHIN THIS DRAWING IS PROPRIETARY AND CONFIDENTIAL. AND IS THE SOLE PROPERTY OF DandR ELECTRONICS CO. LTD. IT MAY NOT BE REPRODUCED AT WHOLE OR IN PART WITHOUT THE WRITTEN PERMISSION OF DandR ELECTRONICS CO. LTD.		DESCRIPTION: 2020 Utility Short Contour Console			
MFG. NO. 901-0165B		CATALOG. NO. XXX			
USED ON: 9XX-XXXX		SHEET 1 OF 1			
FINISH MIDNIGHT BLACK WRINKLE	MATERIAL XXga CRS	REV. 2			