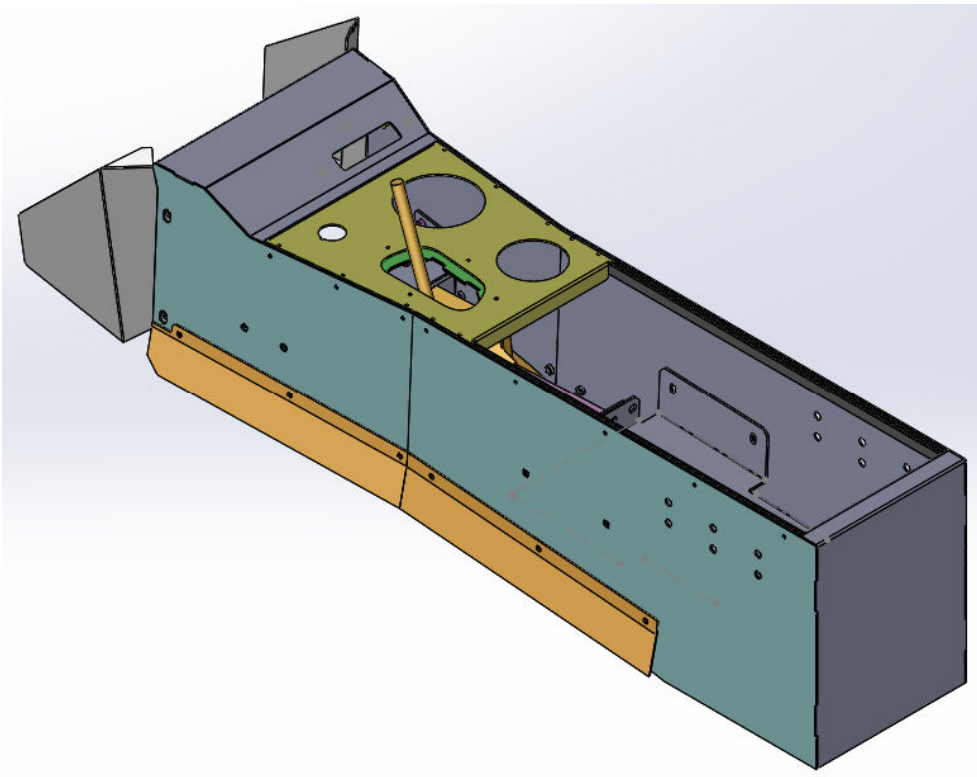




CONSOLE
2018 Dodge Durango - 901-0157A
Pictures are referenced from 901-0107A
Installation Instructions



Parts List

Part #	Description	Qty
901-0157A	2018 DODGE DURANGO CONSOLE	1
801-0721A	BASE P1	1
801-0505A	BASE P2	1
801-0506A	BASE P4	1
801-0722A	BASE P3	1
801-0720A	SHIFTER FACE PLATE	1
801-0719A	GEAR POCKET SUPPORT	1
801-0726A	PS FRONT WING	1
801-0728A	DS FRONT WING	1
	# 6 TAP SCREW BLACK FOR FACEPLATES	20

Installation Instructions

Step 1

- A. Carefully slide down (unsnap) chrome trim piece under shifter knob.
- B. Carefully remove retaining clip that holds knob onto shifter shaft and then remove the shifter knob.



Step 2

- A. Carefully pop out coin tray from console top panel and save to be reused.
- B. Carefully unclip and remove top console panel. Unplug wires as needed.



Step 3

- A. Remove two (2) screws for side trim panels.
- B. Remove Bolt cover at Lower rear End of Console (one each side. Remove Bolts



Step 4

- A. Carefully unclip and remove console rear end panel.
- B. Ensure removal of any electrical connectors.



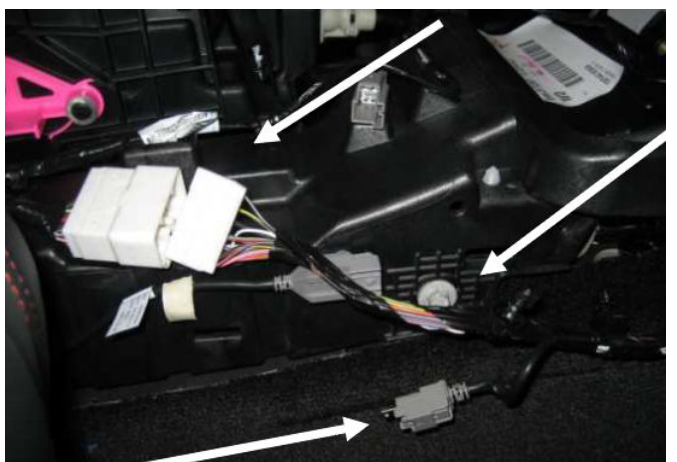
Step 5

- A. Remove Armrest and Hinge Assembly.
- B. **Carefully** unclip and remove console side panels.



Step 6

- A. Remove rear side screws holding housing to floor bracket.
- B. Remove four (4) bolts holding the main plastic console housing to floor and Save hardware. Unplug wire harnesses



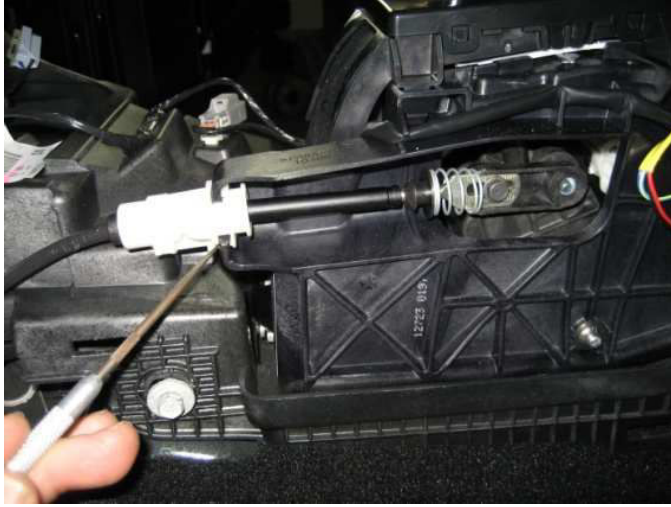
Step 7

- A. Remove (4) bolts holding the shifter assembly to the main plastic console housing.
- B. Unplug shifter harness from console base.



Step 8

- A. Carefully unclip shift cable mount and unbolt cable end. Take note of correct position of cable mount parts. **Save Hardware.**
- B. Remove shifter assembly.



Step 9

- A. Remove forward base screws from lower dash. Save screws. (one each side)
- B. Unplug Main Console Harness from Lower End of Console.



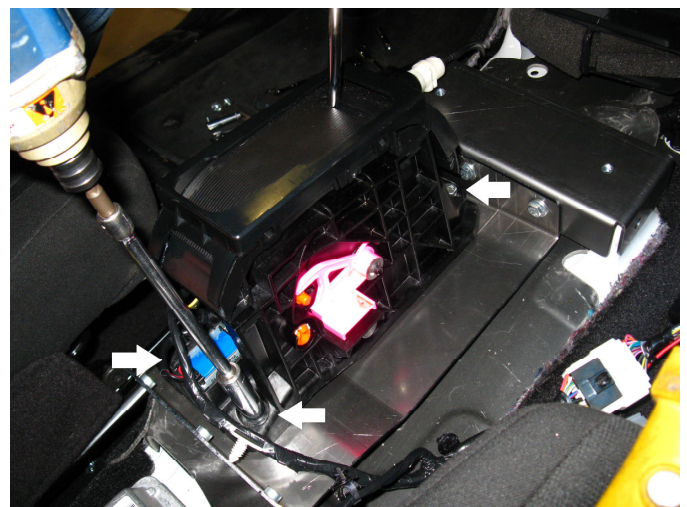
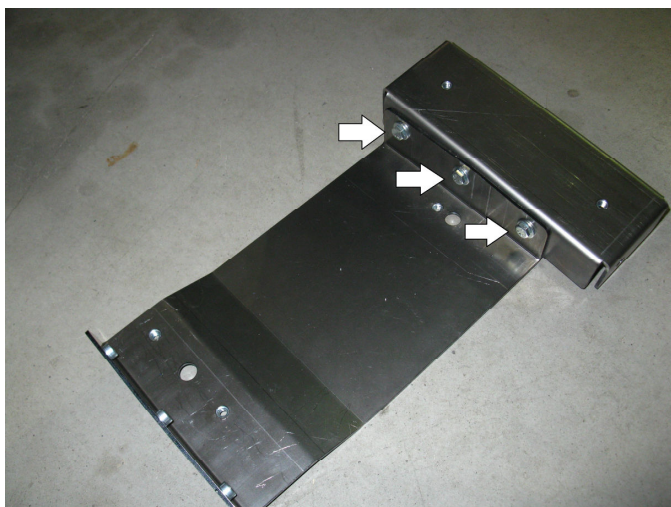
Step 10

- A. Remove Plastic Base.
- B. Carefully remove wire harness from OEM console housing.



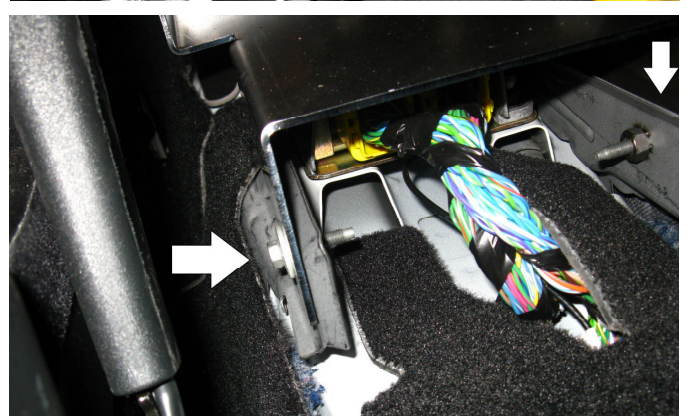
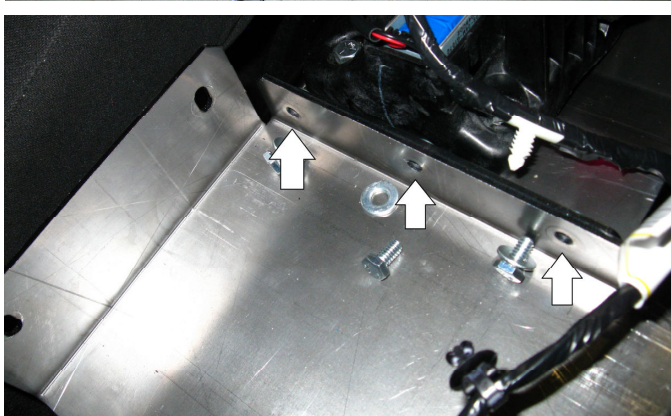
Step 11

- A. Assemble Base P3 and Base P2 using (3x) 1/4-20" Hardware.
- B. Place them under the shifter unit and secure shifter using hardware from Step 7. Reconnect shifter harness.



Step 12

- A. Assemble Base P1 to Base P3 and secure using (3x) 1/4-20" hardware.
- B. Secure Base P1 using (2x) factory bolts previously obtained.

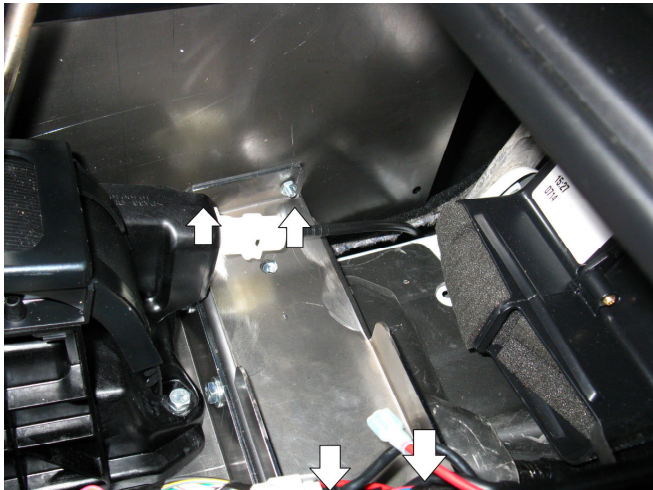
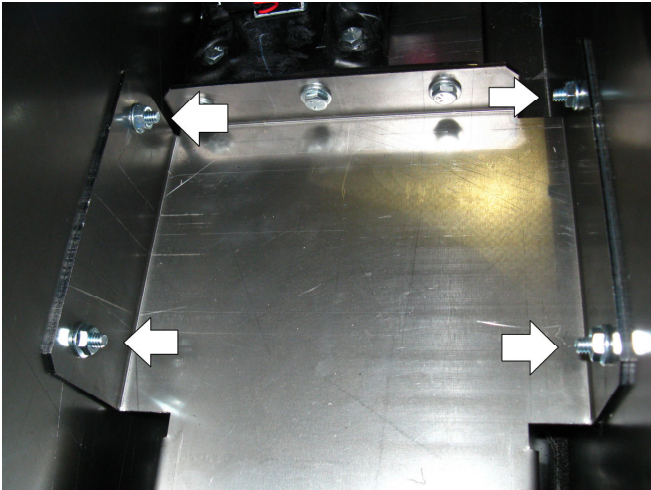


Step 13

- A. Secure Base P3 using (2x) factory bolts previously obtained.
- B. Secure Base P4 to Base P3 using (2x) 1/4" Hardware.



- Step 14
- A. Insert D&R console over the shifter assembly and secure to Base P1 using (4x) 1/4-20 " carriage bolts, washers and nylock nuts.
 - B. Secure console to Base P4 using (4x) 1/4-20" Hex Bolts, washers and lock washers.



Step 15
RECONNECT ALL NECESSARY HARNESSSES.

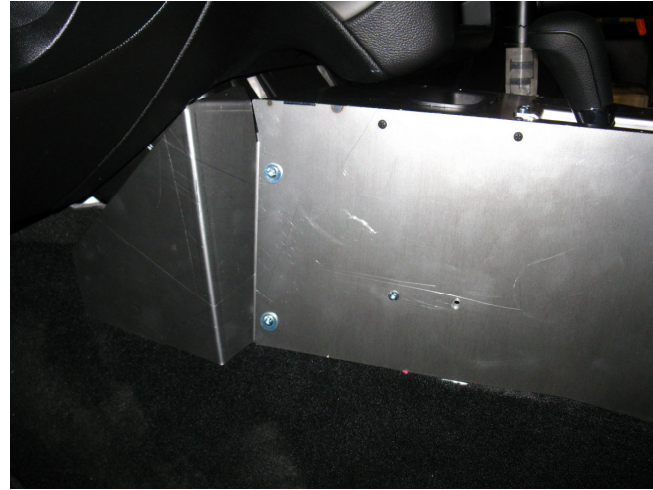
- Step 16
- A. Insert the previously removed coin tray into the console Shifter face plate.
 - B. Place the console shifter faceplate over the console and secure using (10x) #6-32 Black Screws.



- Step 17
- A. Place the Shifter Faceplate cover and secure using (4X) # 10-32 hardware.
 - B. Replace the shifter knob.



- Step 18
- A. Secure console to front dash.
 - B. Place the DS and PS front wings and secure to console (4x) # 10-32 hardware.



Console Assembly should now be complete.

WARRANTY

D & R Electronics warrants its new products to be free from defects in material and workmanship, under normal use and service, for a period of one year on parts replacement, and one year on labor. This warranty applies only to original purchasers acquiring the product directly from D&R Electronics, or its authorized dealers. Warranty will not be recognized without proof of purchase or bill of sale. This warranty is not transferable. The warranty begins on the date of delivery to the first user/purchaser. This warranty shall not apply to products which must be repaired due to normal wear and tear, negligence, improper installation, abuse, misuse, or which have been altered or modified at a facility other than D & R Electronics, or its authorized depot center. Units proved to be defective within the warranty period, based on an examination by D&R Electronics, will be replaced or repaired at D & R Electronics' option. This warranty does not cover travel expenses or labor charges for removal or installation. Lamps, flash tubes, batteries or other items considered consumables are not covered under warranty. This warranty is in lieu of all other express warranties. D&R Electronics makes no other warranties, expressed or implied, than the express warranties contained herein.

PRODUCT RETURN POLICY

In order to provide you with faster service, product returns for repair or replacement, must have a **Return Goods Authorization Number (RGA number)**. Please contact our company to obtain a RGA number before you return the product to D & R ELECTRONICS. Write the RGA number clearly on the package. Be sure you use sufficient packing materials to avoid damage to the product being returned while in transit. D & R ELECTRONICS assumes no responsibility or liability for expenses incurred for the removal and/or the installation of products requiring service and/or repair. Repairing or replacing product is at the discretion of D & R ELECTRONICS.

D&R ELECTRONICS CO. LTD.

CANADA
8820 George Bolton Pkwy.
Bolton, Ontario L7E 2Y4

Tel.: (905)951-9997
Fax: (905)951-0019

www.dandrelectronics.com

USA
2299 Kenmore Ave.
Building #3, Doors 11-14
Buffalo NY, 14207

Toll Free 1-800-538-7338