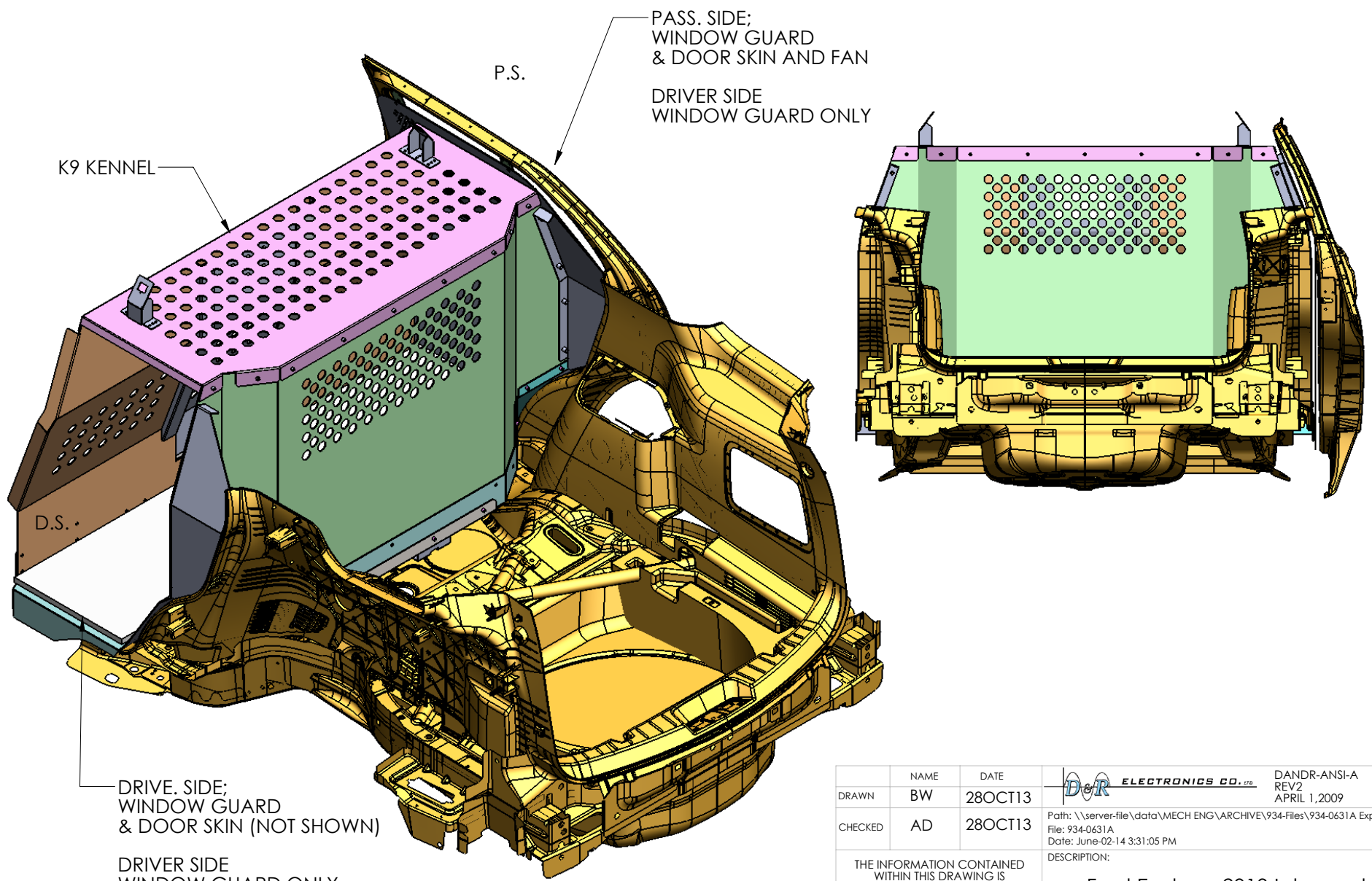


REV.	DESCRIPTION	BY	DATE	APPROVED



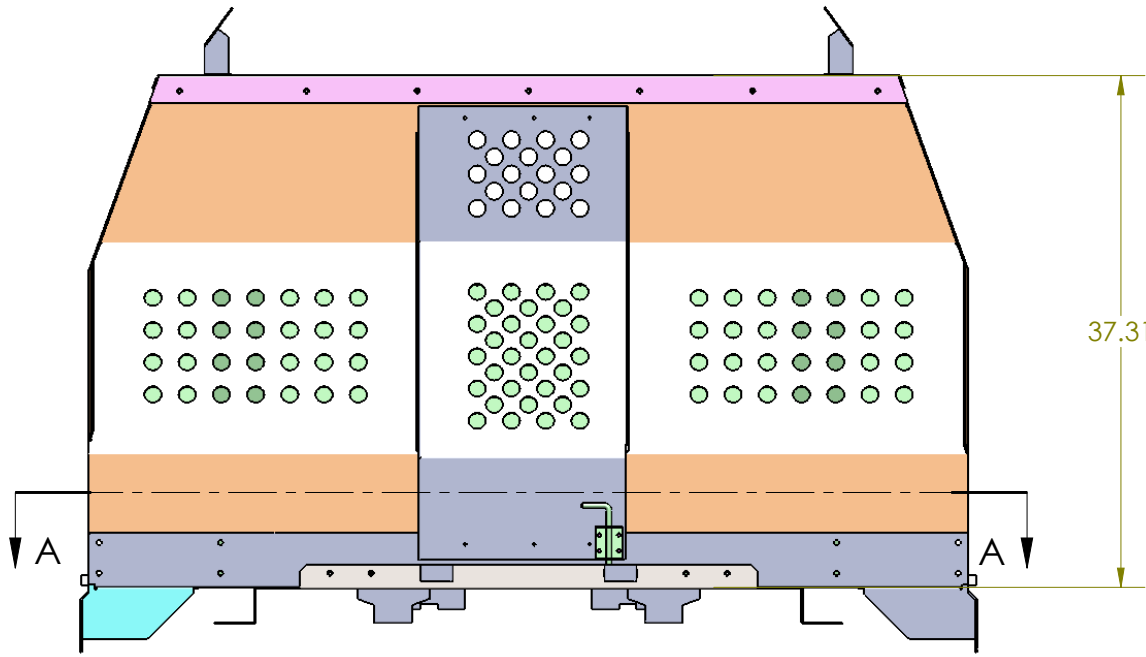
DRIVE. SIDE;
WINDOW GUARD
& DOOR SKIN (NOT SHOWN)

DRIVER SIDE
WINDOW GUARD ONLY

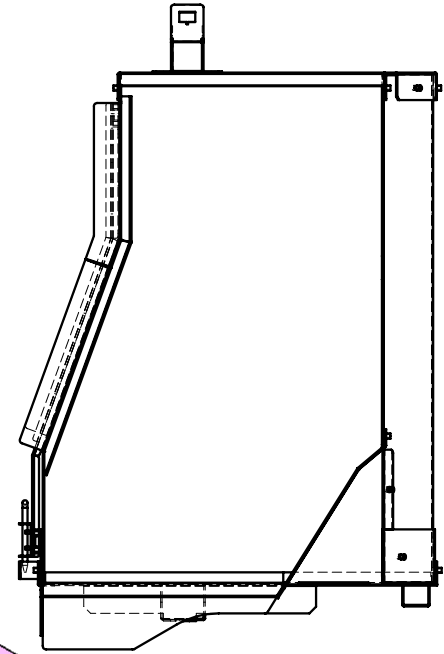
NOTE: 1 pair 14in Light Duty Slides

DRAWN	NAME BW	DATE 28OCT13	ELECTRONICS CO. LTD.	DANDR-ANSI-A REV2 APRIL 1, 2009	SIZE A
CHECKED	AD	28OCT13	Path: \\server-file\data\MECH ENG\ARCHIVE\934-Files\934-0631A Explorer2013 K9 Kennel\ File: 934-0631A Date: June-02-14 3:31:05 PM		
THE INFORMATION CONTAINED WITHIN THIS DRAWING IS PROPRIETARY AND CONFIDENTIAL. AND IS THE SOLE PROPERTY OF DandR ELECTRONICS CO. LTD. IT MAY NOT BE REPRODUCED AT WHOLE OR IN PART WITHOUT THE WRITTEN PERMISSION OF DandR ELECTRONICS CO. LTD.			DESCRIPTION: Ford Explorer 2013 Interceptor Custom K9 Kennel Only		
MFG. NO. 934-0631A			CATALOG. NO. XXX		
USED ON:			SHEET 1 OF 1		
FINISH	MATERIAL Alum/ CRS		REV. 0		

REV.	DESCRIPTION	BY	DATE	APPROVED

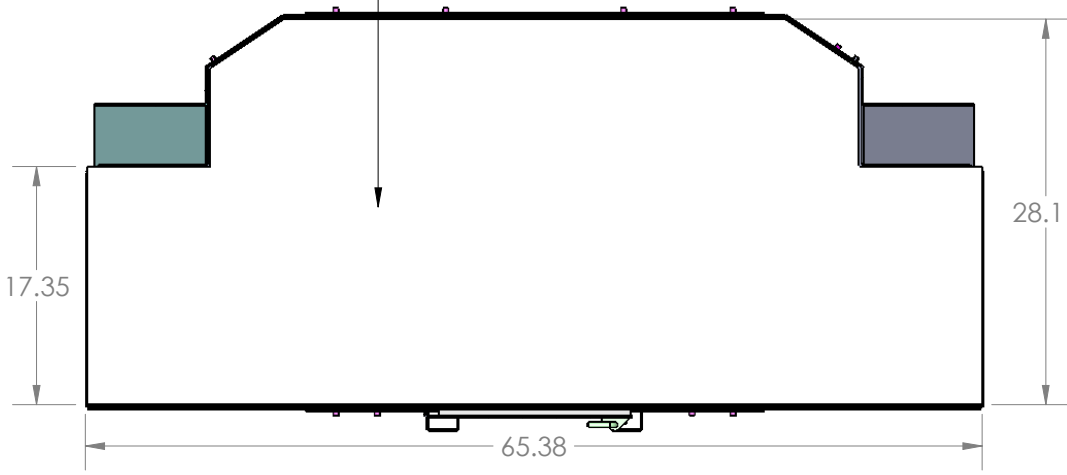


37.31

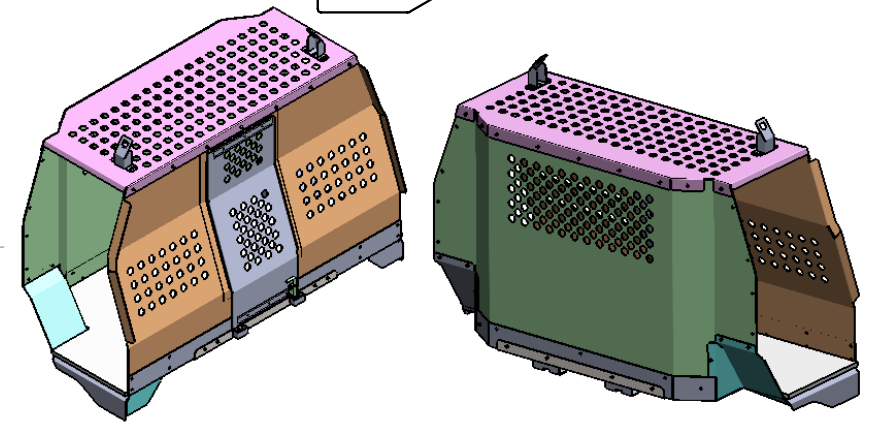


K9 Kennel Only

3/4" THK RUBBER MAT



SECTION A-A
SCALE 1 : 14



NAME	DATE	 DANDR-ANSI-A REV2 APRIL 1, 2009	SIZE
DRAWN	BW 28OCT13		A
CHECKED	AD 28OCT13	Path: \\server-file\data\MECH ENG\ARCHIVE\934-Files\934-0631A Explorer2013 K9 Kennel\ File: 934-0631A Date: June-02-14 3:31:05 PM	
THE INFORMATION CONTAINED WITHIN THIS DRAWING IS PROPRIETARY AND CONFIDENTIAL. AND IS THE SOLE PROPERTY OF DandR ELECTRONICS CO. LTD. IT MAY NOT BE REPRODUCED AT WHOLE OR IN PART WITHOUT THE WRITTEN PERMISSION OF DandR ELECTRONICS CO. LTD.		DESCRIPTION: Ford Explorer 2013 Interceptor Custom K9 Kennel only	
FINISH	MATERIAL	MFG. NO. 934-0631A	CATALOG. NO. XXX
		USED ON: Alum/ CRS	SHEET 1 OF 1 REV. 0