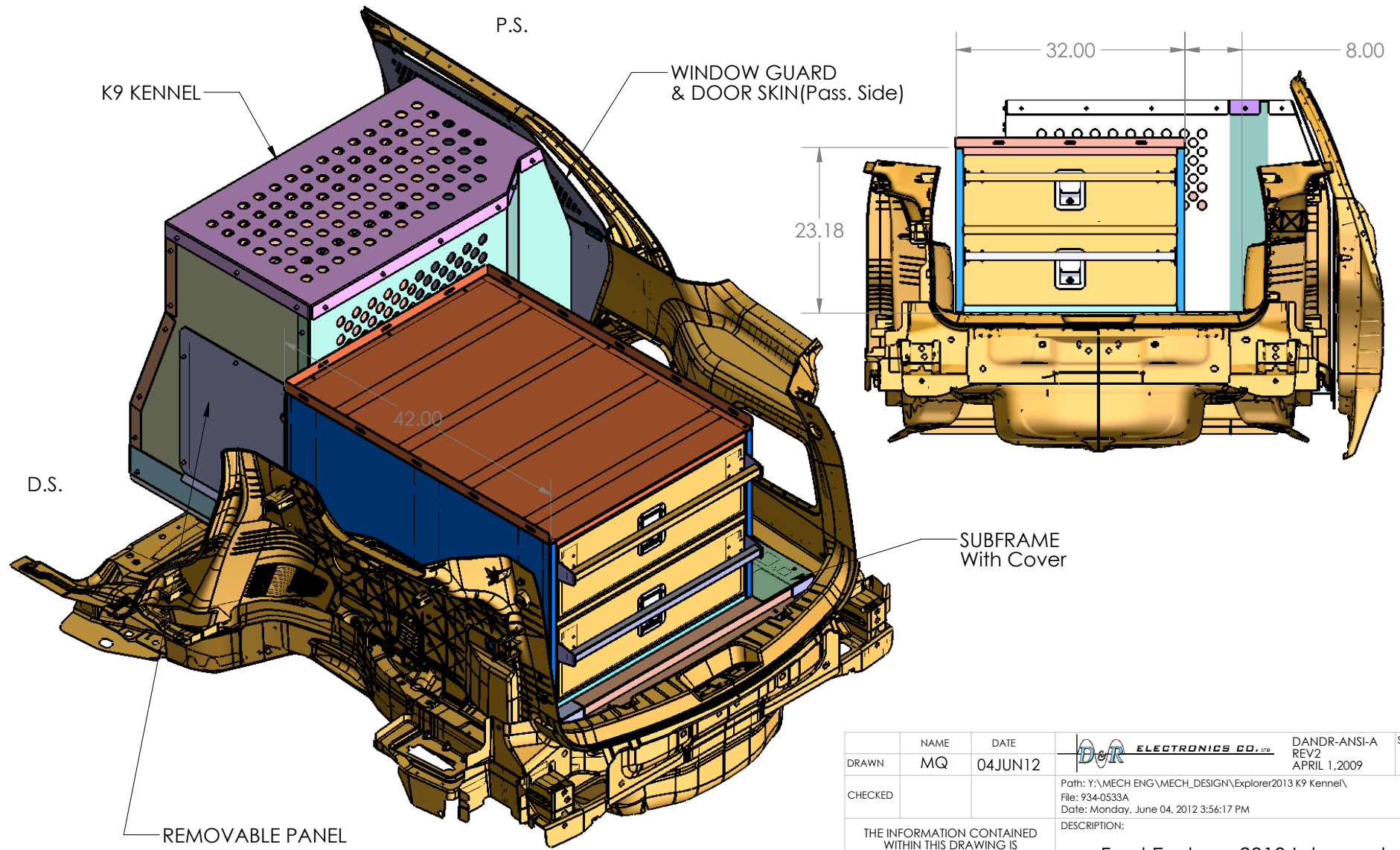
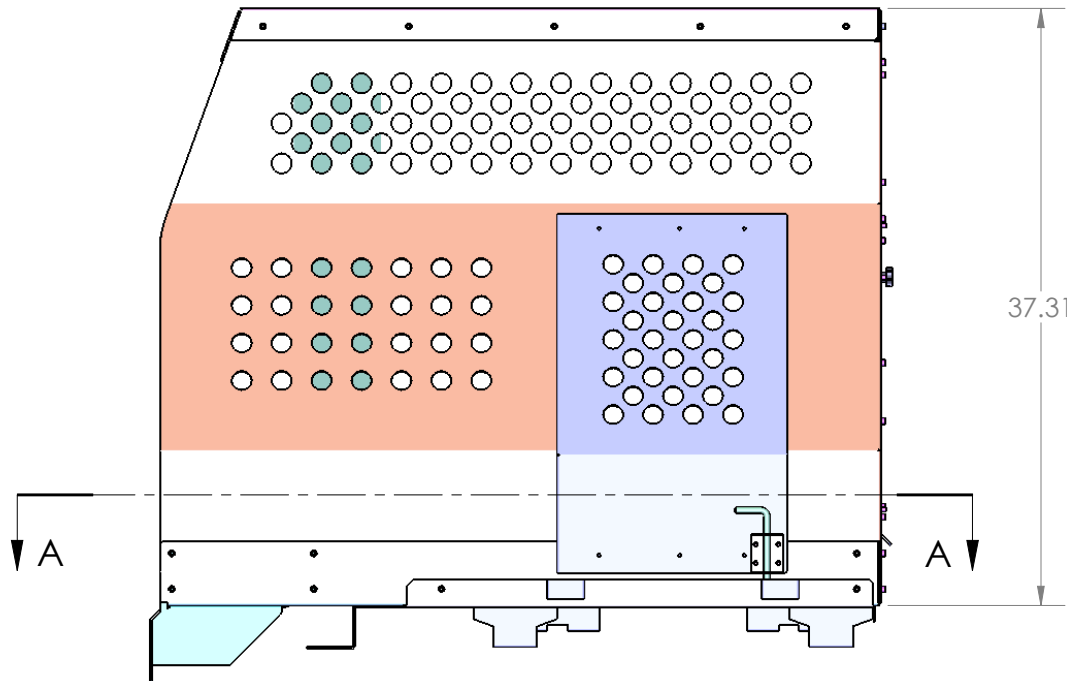


REV.	DESCRIPTION	BY	DATE	APPROVED

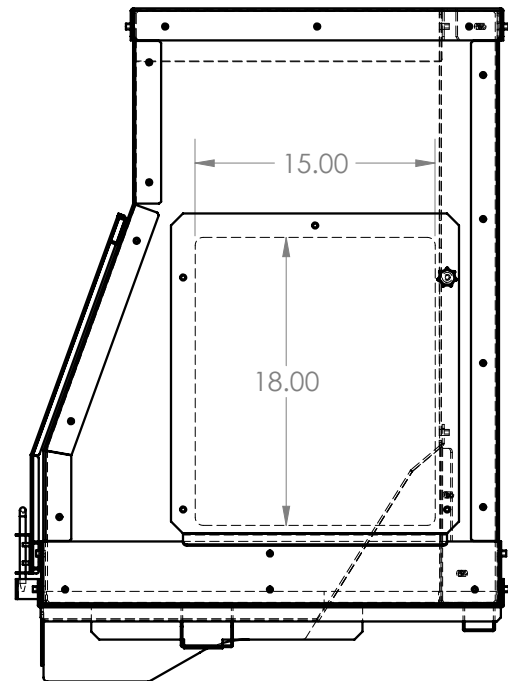


DRAWN	NAME MQ	DATE 04JUN12	ELECTRONICS CO., LTD.	DANDR-ANSI-A REV2 APRIL 1, 2009	SIZE A
CHECKED			Path: Y:\MECH ENG\MECH_DESIGN\Explorer2013 K9 Kennel\ File: 934-0533A Date: Monday, June 04, 2012 3:56:17 PM		
THE INFORMATION CONTAINED WITHIN THIS DRAWING IS PROPRIETARY AND CONFIDENTIAL. AND IS THE SOLE PROPERTY OF DandR ELECTRONICS CO. LTD. IT MAY NOT BE REPRODUCED AT WHOLE OR IN PART WITHOUT THE WRITTEN PERMISSION OF DandR ELECTRONICS CO. LTD.			DESCRIPTION: Ford Explorer 2013 Interceptor Custom K9 Kennel with Storage Sys		
MFG. NO. 934-0533A			CATALOG. NO. XXX		
USED ON:			SHEET 1 OF 1		
FINISH	MATERIAL Alum/ CRS		REV. 0		

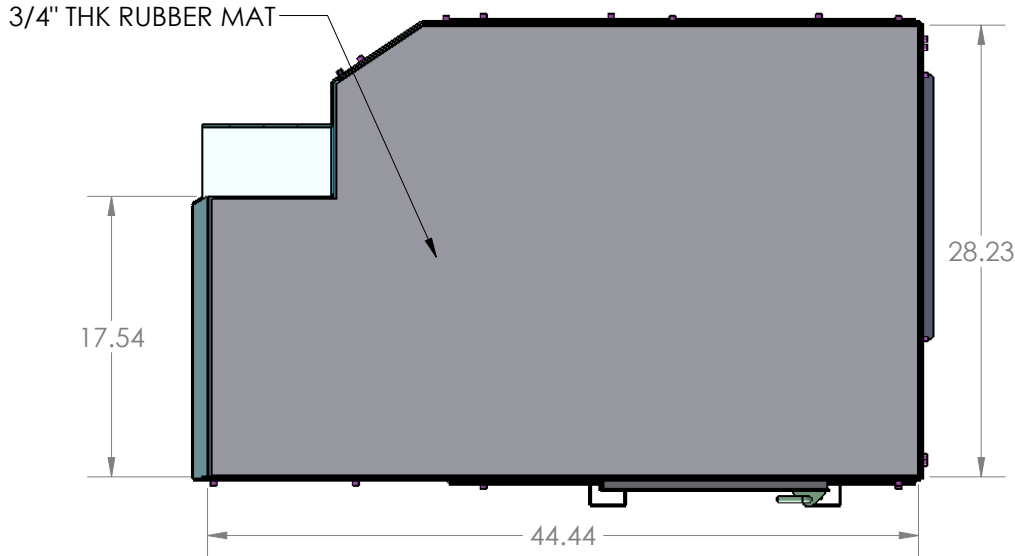
REV.	DESCRIPTION	BY	DATE	APPROVED



37.31



K9 Kennel Only



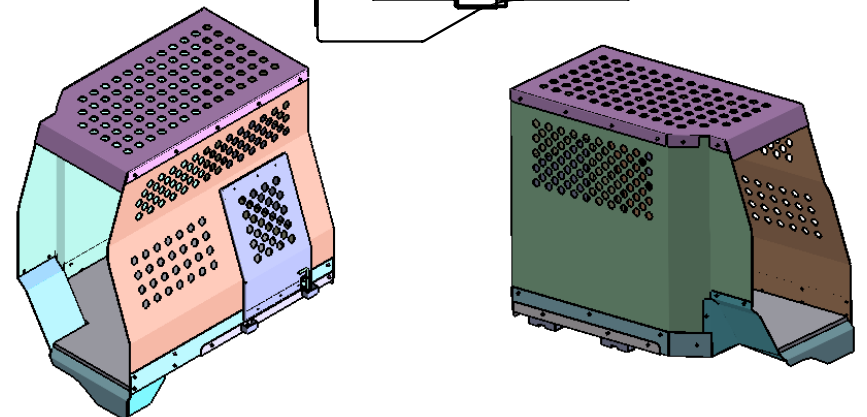
3/4" THK RUBBER MAT

17.54

28.23

44.44

SECTION A-A
SCALE 1 : 12



DRAWN	NAME MQ	DATE 01JUN12	ELECTRONICS CO.	DANDR-ANSI-A REV2 APRIL 1,2009	SIZE A
CHECKED	Path: Y:\MECH ENG\MECH_DESIGN\Explorer2013 K9 Kennel\ File: 934-0533A Date: Monday, June 04, 2012 3:56:17 PM			DESCRIPTION: Ford Explorer 2013 Interceptor Custom K9 Kennel with Storage Sys	MFG. NO. 934-0533A
THE INFORMATION CONTAINED WITHIN THIS DRAWING IS PROPRIETARY AND CONFIDENTIAL. AND IS THE SOLE PROPERTY OF DANDR ELECTRONICS CO. LTD. IT MAY NOT BE REPRODUCED AT WHOLE OR IN PART WITHOUT THE WRITTEN PERMISSION OF DANDR ELECTRONICS CO. LTD.			USED ON:	SHEET 1 OF 1	
FINISH	MATERIAL Alum/ CRS		REV.	0	