

WARRANTY

D & R Electronics warrants its new products to be free from defects in material and workmanship, under normal use and service, for a period of one year on parts replacement, and one year on labor. This warranty applies only to original purchasers acquiring the product directly from D&R Electronics, or its authorized dealers. Warranty will not be recognized without proof of purchase or bill of sale. This warranty is not transferable. The warranty begins on the date of delivery to the first user/purchaser. This warranty shall not apply to products which must be repaired due to normal wear and tear, negligence, improper installation, abuse, misuse, or which have been altered or modified at a facility other than D & R Electronics, or its authorized depot center. Units proved to be defective within the warranty period, based on an examination by D&R Electronics, will be replaced or repaired at D & R Electronics' option. This warranty does not cover travel expenses or labor charges for removal or installation. Lamps, flash tubes, batteries or other items considered consumables are not covered under warranty.

This warranty is in lieu of all other express warranties. D&R Electronics makes no other warranties, expressed or implied, than the express warranties contained herein.

PRODUCT RETURN POLICY

In order to provide you with faster service, product returns for repair or replacement, must have a **Return Goods Authorization Number (RGA number)**. Please contact our company to obtain a RGA number before you return the product to D & R ELECTRONICS. Write the RGA number clearly on the package. Be sure you use sufficient packing materials to avoid damage to the product being returned while in transit.

D & R ELECTRONICS assumes no responsibility or liability for expenses incurred for the removal and/or the installation of products requiring service and/or repair. Repairing or replacing product is at the discretion of D & R ELECTRONICS.

D&R ELECTRONICS Co. LTD.

CANADA

8820 George Bolton Pkwy.
Bolton, Ontario L7E 2Y4

Tel.: (905)951-9997
Fax: (905)951-0019

www.dandrelectronics.com

USA

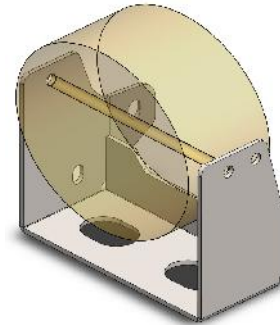
40 Sonwil Drive
Cheektowaga, NY, 14225

Toll Free 1-800-538-7338

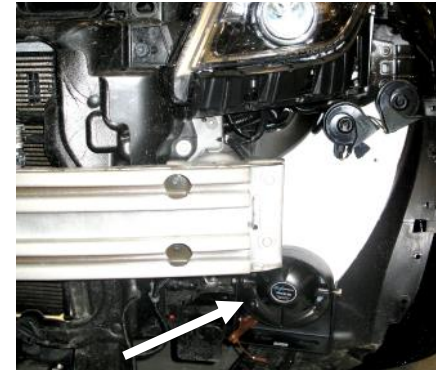


Product ID: 935-0062A Explorer 2013

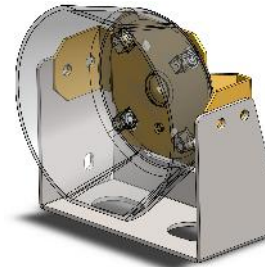
Description: Speaker Bracket For DRCS100 or Optional DRCS110 INSTALLATION MANUAL



**DCRS 100
Speaker Mount**



**DCRS 110 Mounted
With 935-0066A Adapter**



Parts List & Hardware List

Quantity	Part #	Description
1	935-0062A	Explorer 2013 Speaker Bracket
1	935-0066A (OPTIONAL)	DRCS110 Adapter Bracket with hardware (OPTIONAL FOR DRCS110 Speaker install ONLY)
2	411-0043	BOLT,5/6-18 x1", S.S BOLT
2	432-0008	5/6-18 NYLOC NUT S.S
2	413-0005	WASHER,5/16 LOCK 18.8 S.S.

Contents:

Parts List-----	1
Installation Instructions-----	2-3
Warranty & Product Return Policy-----	4

2/26/2013

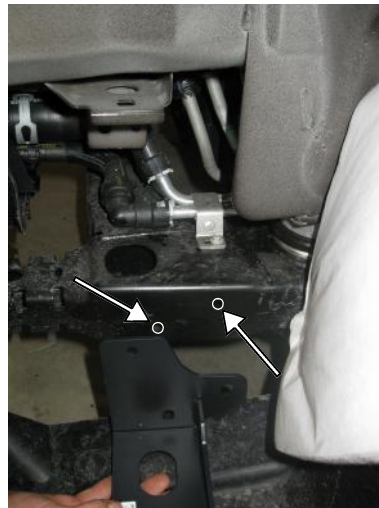
Installation Instructions

Step 1

Remove front bumper

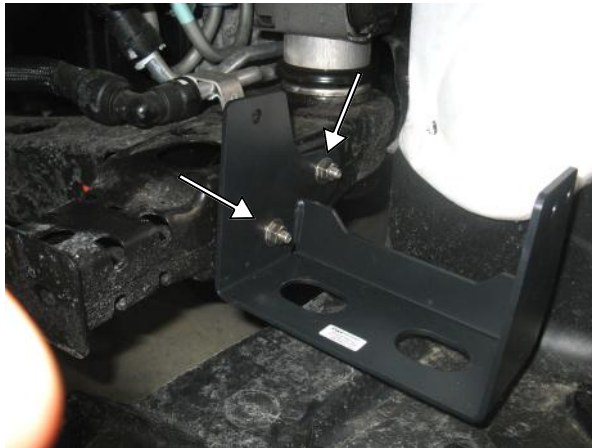
Step 2

Locate these holes in frame in front of the driver side front tire.



Step 3

Attach bracket to frame rail using 5/16 hardware as shown from Line



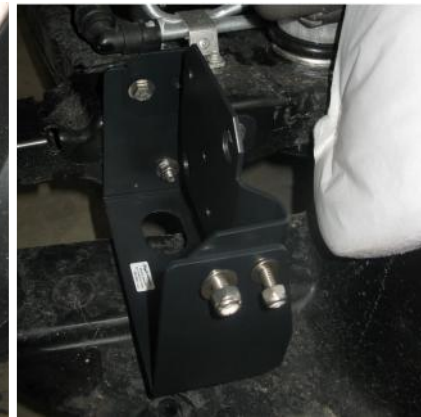
Step 4

Install DRCS100 Speaker to bracket, complete wiring re install bumper. This completes the DRCS100 install into your 2013 Explorer. Skip this step and go to Step 5 if your using the DRCS110 Speaker.



Step 5 Installation for the DRCS110 Speaker

Install adapter bracket using 1/4-20 hardware supplied with bracket to speaker bracket as shown.



Step 7

Mount DRCS110 Speaker to adapter bracket with supplied 1/4-20x1-1/4in Hex bolts from speaker box.



Step 8

Wire speaker and re install front bumper. This completes the installation for the DRCS110 into your 2013 Explorer

