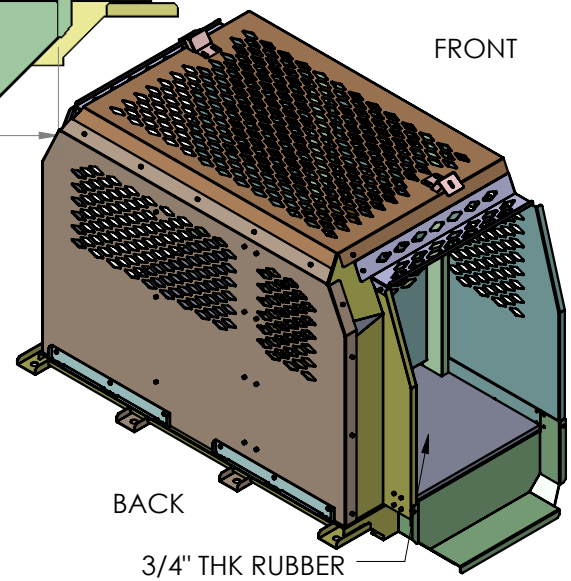
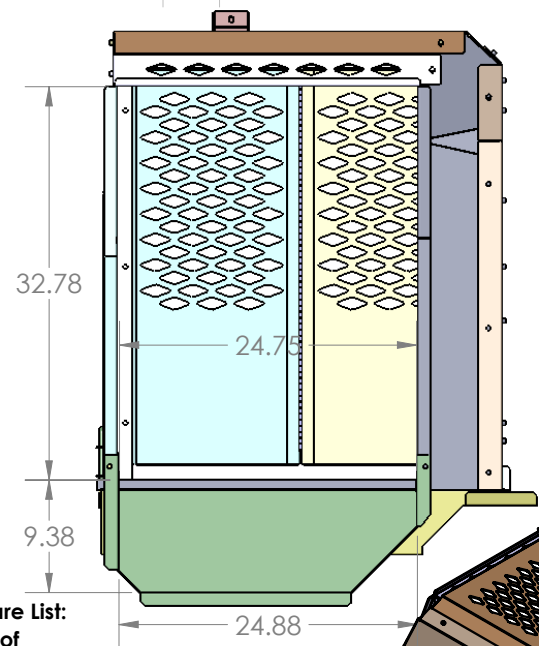
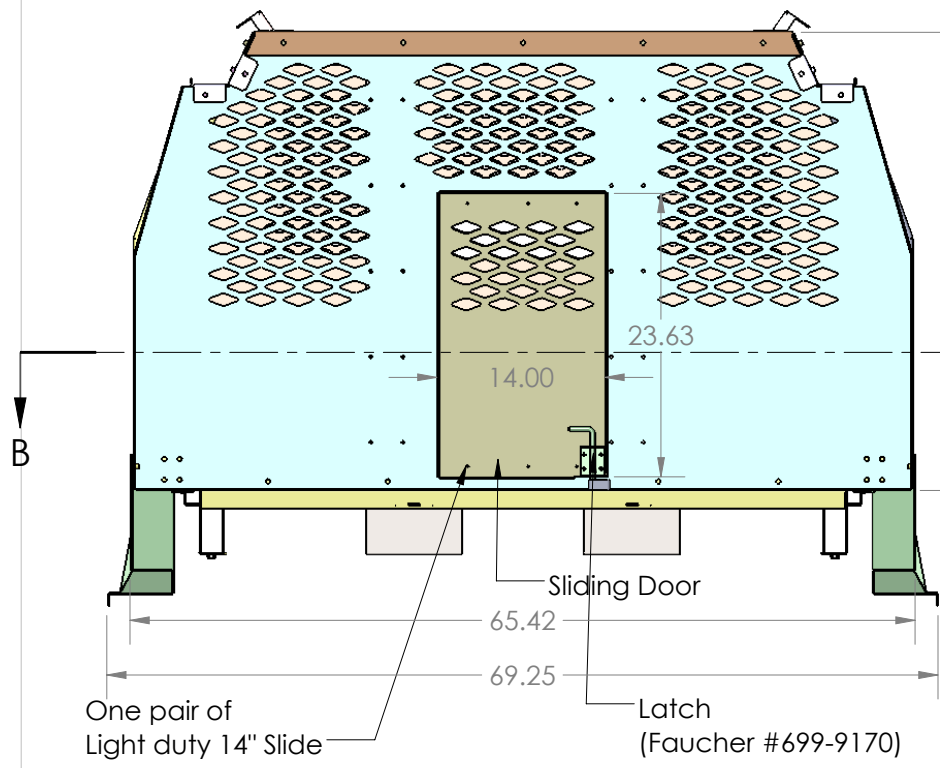
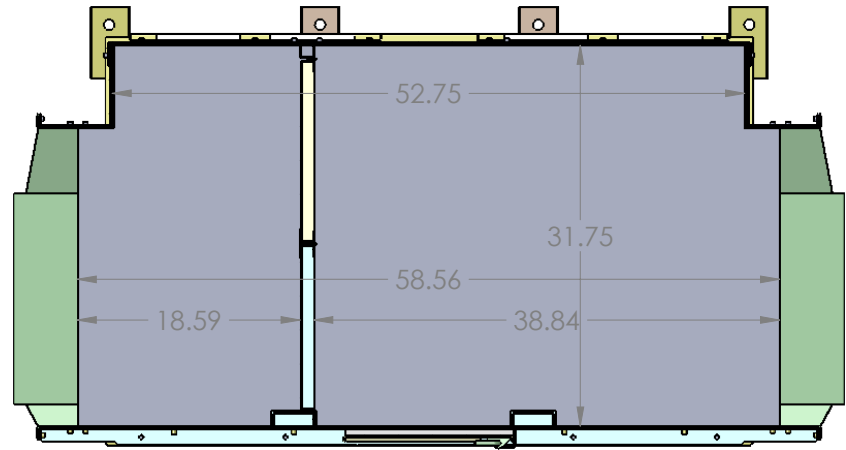


REV.	DESCRIPTION	BY	DATE	APPROVED
------	-------------	----	------	----------



- Hardware List:**
- 86 Sets of
  - 1/4-20 x 3/4" Button Head Screws
  - 1/4-20 Lock Washer
  - 1/4-20 Flat Washer
  - 4 Sets of
  - 1/4-20 x 1" Carriage Bolts
  - 1/4-20 Flat Washers
  - 1/4-20 Nyloc Nuts
  - 6 Sets of
  - 1/4-20 Flat Washers
  - 1/4-20 Nyloc Nuts
  - 20 Sets of
  - #10-32 x 1/2" RD Head Screws
  - #10-32 Lock Washer
  - #10-32 Flat Washer
  - 24-  $\phi$  3/16" GP3/8" Alum Rivets
  - 2-#10 Fender Washers

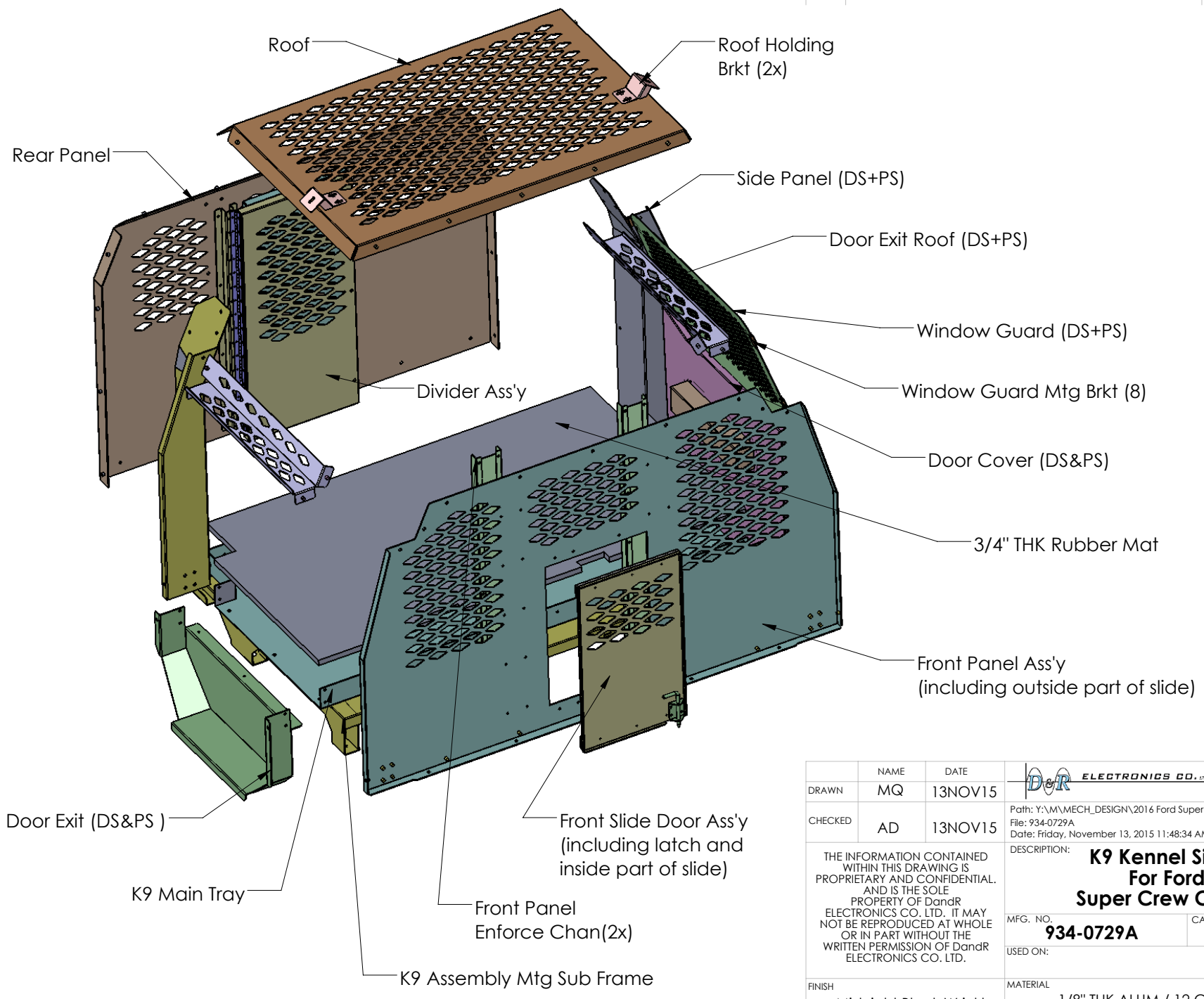


SECTION B-B  
SCALE 1 : 16

Package should also include  
1 pair of window cover and  
door cover (see sheet2)

DRAWN	NAME MQ	DATE 13NOV15	<b>DANDR ELECTRONICS CO., LTD.</b> DANDR-ANSI-A REV2 APRIL 1, 2009	SIZE <b>A</b>
CHECKED	AD	13NOV15		Path: Y:\M\MECH_DESIGN\2016 Ford Super Crew F150 K9 Kennel\ File: 934-0729A Date: Friday, November 13, 2015 11:48:34 AM
THE INFORMATION CONTAINED WITHIN THIS DRAWING IS PROPRIETARY AND CONFIDENTIAL. AND IS THE SOLE PROPERTY OF DandR ELECTRONICS CO. LTD. IT MAY NOT BE REPRODUCED AT WHOLE OR IN PART WITHOUT THE WRITTEN PERMISSION OF DandR ELECTRONICS CO. LTD.			DESCRIPTION: <b>K9 Kennel Single Dog          For Ford F-150          Super Crew Cab Pick up</b>	
MFG. NO.		934-0729A		CATALOG. NO.
USED ON:			SHEET 1 OF 2	
FINISH	Midnight Black Wrinkle		MATERIAL	1/8" THK ALUM / 12 GA CRS
			REV.	0

REV.	DESCRIPTION	BY	DATE	APPROVED



DRAWN	NAME MQ	DATE 13NOV15	<b>ELECTRONICS CO., LTD.</b> DANDR-ANSI-A REV2 APRIL 1, 2009 SIZE <b>A</b>	
CHECKED	AD	13NOV15		
Path: Y:\M\MECH_DESIGN\2016 Ford Super Crew F150 K9 Kennel\ File: 934-0729A Date: Friday, November 13, 2015 11:48:34 AM			DESCRIPTION: <b>K9 Kennel Single Dog          For Ford F-150          Super Crew Cab Pick up</b>	
THE INFORMATION CONTAINED WITHIN THIS DRAWING IS PROPRIETARY AND CONFIDENTIAL. AND IS THE SOLE PROPERTY OF DandR ELECTRONICS CO. LTD. IT MAY NOT BE REPRODUCED AT WHOLE OR IN PART WITHOUT THE WRITTEN PERMISSION OF DandR ELECTRONICS CO. LTD.				MFG. NO. <b>934-0729A</b>
FINISH Midnight Black Wrinkle			CATALOG. NO. USED ON: MATERIAL 1/8" THK ALUM / 12 GA CRS	SHEET 2 OF 2 REV. <b>0</b>