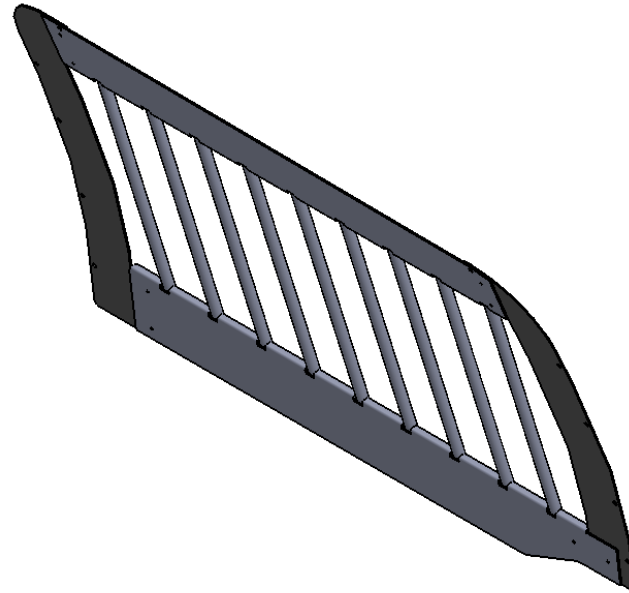



REV.	DESCRIPTION	BY	DATE	APPROVED



937-0350A : DS WB

937-0351A : PS WB

Additional Hardware: **(PER SIDE)**
 10x #10 x 3/4" Self Tapping Screw

	NAME	DATE	 DANDR ELECTRONICS CO. LTD.		DANDR-ANSI-A REV2 APRIL 1, 2009	SIZE A
DRAWN	AT	13/4/16	Path: \\server-file\data\M\MECH_DESIGN\Ford F150 2016 Keelok Window Bars\ File: 937-0349A Date: Friday, April 22, 2016 11:19:25 AM			
CHECKED	AD	13/4/16	DESCRIPTION: 2016 Ford F-150 Vertical WB (PS+DS)			
THE INFORMATION CONTAINED WITHIN THIS DRAWING IS PROPRIETARY AND CONFIDENTIAL. AND IS THE SOLE PROPERTY OF DandR ELECTRONICS CO. LTD. IT MAY NOT BE REPRODUCED AT WHOLE OR IN PART WITHOUT THE WRITTEN PERMISSION OF DandR ELECTRONICS CO. LTD.			MFG. NO. 937-0349A	CATALOG. NO. XXX	SHEET 1 OF 1	
			USED ON: 9XX-XXXX			
FINISH Midnight Black Wrinkle			MATERIAL 14ga CRS	REV. 0		