

Manufacturer of Fleet Vehicle Equipment  
*Since 1976*

# *Product Guide*



1-800-538-7338 | [www.dandrelectronics.com](http://www.dandrelectronics.com)

---

**TABLE OF CONTENT**

---

CONSOLE ACCESSORIES.....p.23

CONSOLES.....p.20

CUSTOM BUILDS.....p.34

DOCKING STATIONS.....p.26

STORAGE SOLUTIONS AND WEAPON MOUNTS.....p.29

K9 KENNELS.....p.30

LAPTOP TRAYS / LAPTOP MOUNTS.....p.25

LED BEACONS / VISOR LIGHTS / WINDSHIELD LIGHT.....p.7

LED LIGHTBARS.....p.3

LED LIGHTS / GENESIS LICENSE PLATE BRACKETS.....p.9

LIGHT / SIREN CONTROLLERS.....p.13

MINITECH LIGHTBARS.....p.4

MOUNTING PLATE & LEG KITS.....p.22

ODYSSEY LIGHTBARS.....p.5

PARTITIONS / WINDOW BAR SYSTEMS.....p.33

POWER DISTRIBUTION UNITS.....p.18

PRINTER HOLDERS / G1 DOCK.....p.27

REAR WINDOW GUARDS / DOOR SKINS.....p.32

SAMSUNG DeX - DOVETAIL.....p.19

SIRENS.....p.13

SPEAKERS / BATTERY WATCHDOG / ANTI-THEFT MODULES.....p.16

SUBFRAMES.....p.28

TAILGATE EXTERIOR LIGHTBARS / LED TRAFFIC DIRECTORS.....p.8

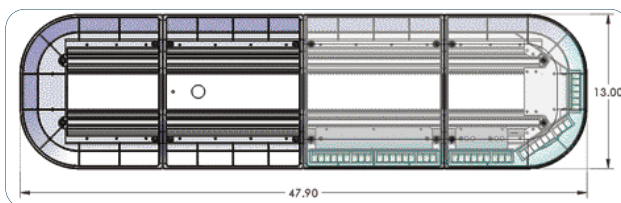
## LIGHTBARS

## SYNERGY LIGHTBAR



- Available with 6, 12, or 18 High Power LED plug-in modules
  - Deep parabolic reflector optic
  - Built-in Traffic Director
  - Standard Dimmer and Pattern feature
  - Built-in and programmable flash patterns
  - Options available for configuring with IQ Software
  - Flash pattern programs uploadable via USB
  - Amperage draw:
    - 6 LED module - 0.65A
    - 12 LED module - 1.15A
    - 18 LED module - 1.75A
  - Operating Temperature: -40°C to +65°C (-40F to +149F)
  - 15 conductor 16 feet harness or DATA Cable when controlled with D&R controller
  - UV treated polycarbonate lens
  - Screw down lens to base
  - Available LED colors (Single/Dual/Tricolor modules): **CLEAR, RED, AMBER, BLUE, GREEN**
  - Full Front Clear Take Downs available
  - Meets all applicable SAE Class1, NFPA and Title XIII when properly configured
  - Available sizes:
    - Width - 13", Height - 2", Length - 24" / 36" / 48" / 60" / 72"
  - Gutter clamps to install Synergy Lightbar on Interceptor Utility\*\*:
    - 936-0757C - Stainless Steel
    - 936-0757A - Black
    - 936-0757B - White
- \*\*NOTE: Mounting kits available for most makes and models of vehicles.

936-0757B



## PROWLER LINEAR LIGHTBAR

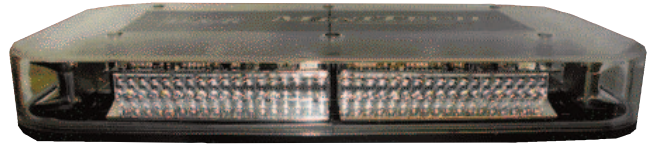
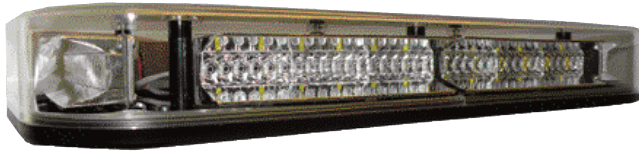


- Provides 360 degrees of coverage
- Selectable flash patterns
- Either 6 (WDRF6) or 12 (WDRF12) High Power LED plug-in modules
- 13 conductor 18' harness (other lengths available)
- Amperage Draw: 0.55 - 0.6 amp per module
- Total Amperage Draw: 12.5 amp
- Operating Temperature: -40°C to +65°C (-40°F to 149°F)
- Rear **RED** LED S/T/T Lights available
- Available with Front, Rear, and Side **CLEAR** LED Work Lights
- Exceptionally bright and powerful signal generated by D&R light modules
- Optional internal or external photocell available for auto dimming night
- UV treated polycarbonate lens
- Deep parabolic reflector
- Dual colour modules independently controlled
- +12VDC - Negative Ground
- Meets all applicable SAE Class 1 and California Title XIII and NFPA1901 when properly configured
- Multiple mounting options available
- Material: Base - Corrosion resistant aluminum chassis
- Available sizes: L - 22" / 35" / 46" / 56" / 66" / 76", W - 13", H - 2.75" (w/o mount feet)

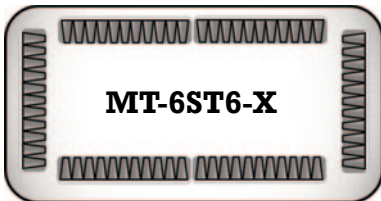
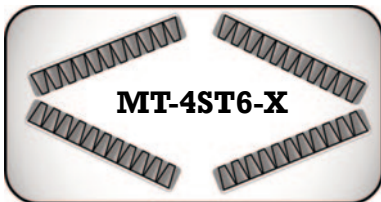




**MT-4ST6-X / MT-6ST6-X**



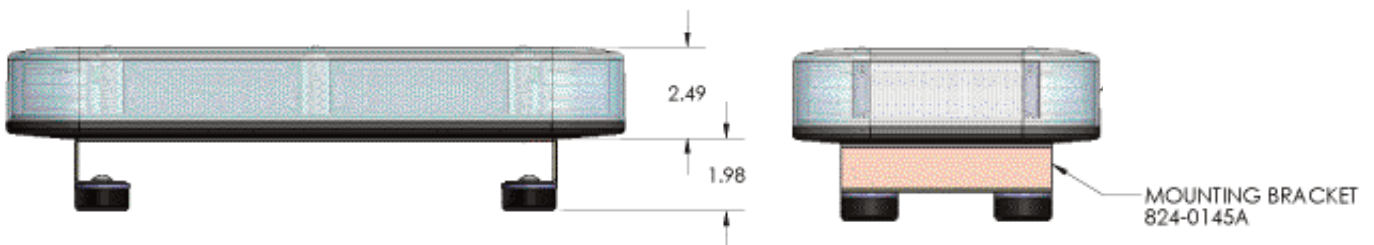
- Mini LED Lightbar *MT-4ST6-X / MT-6ST6-X*
- Dimensions: L-17", W-8.0", H-2.25" w/o mounting feet
- Weight: 5lbs w/o mounting feet
- HD Extruded Aluminum Base
- Clear Polycarbonate Lens with UV Guard
- GEN III Linear LED Light Modules with 6 or 12 LEDs
- 12/24V
- Class 1, SAE J845 Certified
- Operating Temperature: -50°C to +50°C
- Linear LED light Modules with 6 or 12 LEDs
- Maximum Draw: GT6 Modules - 3.6 Amp  
GT12 Modules - 7.2 Amp
- Available LED Modules colors:  
**BLUE, CLEAR, RED, RED/CLEAR, BLUE/CLEAR**
- Available Lenses colors: **BLUE, CLEAR, RED**



Mounting Options Available:

1. 1.400-0200 Bumper Rubber Lightbar feet
2. 90.3281 Cigarette adapter plug ON/OFF Momentary 12ft cord
3. Magnetic Mount kit with four round 90 lbs pull magnets\*
4. Magnetic Mount, medium height mount kit, two 1.75" tall brackets (936-0543A) and four round 90 lbs pull magnets\*
5. Magnetic Mount, medium height mount kit, two 4" tall brackets (936-0544A) and four round 90 lbs pull magnets\*

\*Note: Magnetic mounting will not work on vehicles with aluminum bodies





**OD-ELITE - ODYSSEY ELITE LIGHTBAR**

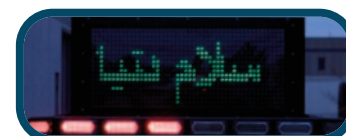


- Operates with 12 or 24 volts
- Power Consumption
  - Display Average 8Amps, Light bar Average 7Amps
  - 0 Amps consumption on shutdown
- Web based graphical user interface for setup programming.
- Access Web interface through computer or mobile device
- Easy Installation three wire hook up.
- SD card upload for messages or light bar flash pattern programs
- Touchpad with 2.4 inch LCD Full Color Graphic display and full color backlight keys.



**Messageboard**

- 24 bit 16M color LEDs.
- Multi - Lingual Display
- What you see is what you get setup
- Full Color RGB Message board capable of text and graphics.



## ODYSSEY LIGHTBARS

- The Odyssey LED sign is a compact lightbar and arrowboard combination
- The retractable motorized arrowboard / traffic director provides superior visibility in a low profile configuration
- This patent design gives you the full advantage of a 360-degree lightbar when in lower position

**FEATURES:**

- GEN III LED technology
- Low-profile (3" high) and 'Easy Swap' plug and play modules
- Motorized actuator for easy deployment
- Compatible with D&R Light Controllers / Light & Siren Ctrl
- Mounting kit included
- Meets SAE Class1 and Title XIII when properly configured

### MINI ODYSSEY LIGHTBAR



1. ODM3-1A Board with One Arrow (12 LED modules in Board)
2. ODM3-2A Board with Two Arrows (16 LED modules in Board)
3. ODM3-1ARA Board with One Arrow and Road Alert (12 LED modules in Board)

**Mini Odyssey Dimensions:**

Sign Down: W-47 3/4", D-21 1/4", H-3.0"  
 Sign Up Raised Height: 19 7/8"

### ODYSSEY LIGHTBAR



1. OD3-1A Board with One Arrow (16 LED modules in Board)
2. OD3-2A Board with Two Arrows (24 LED modules in Board)
3. OD3-1ARA Board with One Arrow and Road Alert (16 LED modules in Board)

**Odyssey Dimensions:**

Sign Down: W-47 3/4", D-28 1/4", H-3.0"  
 Sign Up Raised Height: 26 7/8"

### MINI ODYSSEY LIGHTBAR W/BUILD-IN ROAD ALERT SIGN

**ODM3-RA**



**TECHNICAL SPECS:**

- Finish: Enamel
- Color: White or Black
- Material: Base-12ga aluminum / Sign-8ga aluminum
- Optional Road Alert designed in
- Dimensions: Sign Down: W-47 3/4", D-21 1/4" / H-3.0"  
 Sign Up Raised height - 19 7/8"

- Arrow Board: Road Alert RAT-X-40  
 \*X-available colors: **AMBER, RED**
- CPL (Character/Line) - 8
- Programmable messages - 80
- Text Messaging - Yes
- Symbols - Yes
- Fixed / Scrolling Message - Yes

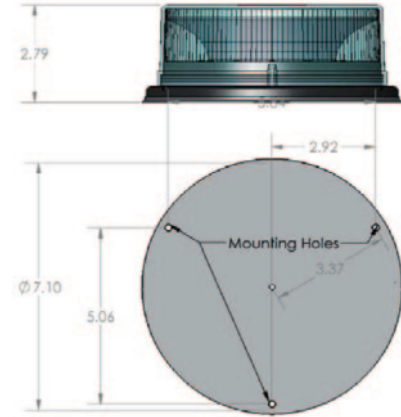


## LED BEACONS

- Polycarbonate base and lenses with UV protection.
- Amperage draw: Average—1.8 Amp, Peak—3.6 Amp
- Operating Voltage: 9.5V-24V
- Dimmer Function through wire connection
- Comes with 3ft straight cable for permanent mount
- Optional Lighter Plug with dual switch (ON/OFF and Momentary) and with 15ft straight cable —Part# 215-0183
- Mounting Options; magnet, mirror mount, truck rack,
- 25 Flash Patterns with 2 Simulated Rotating Patterns
- Available Lens Colours: **AMBER, BLUE, CLEAR, RED**
- Available Led Colours : **AMBER, BLUE, CLEAR, GREEN, RED**
- Weight is less then 3lbs
- SAE J845 Class 1 Certified in Amber
- For Magnet mount order magnet mounting kit#: 499-0003 Magnetic Mount Version Includes:
  - 1) One 3" round 90 lb pull magnet
  - 2) One 15 Ft cable with dual switch power plug



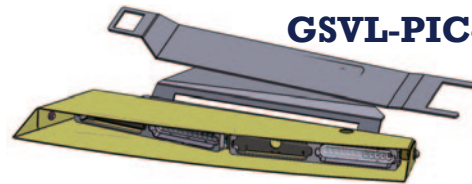
**BCN24**



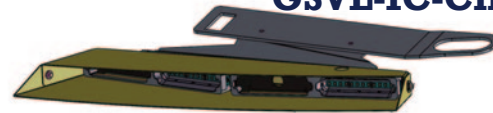
## GENESIS SLEEK VISOR LIGHTS

- Hi visibility when activated.
- Low profile, lightweight
- Extremely discrete and non-intrusive
- Split Red/Blue super bright LED
- Single/Dual colour modules
- Take down option available
- Selectable flash pattern
- Aluminum trim mounting bracket to hold the lightbar position near the top windshield area
- Molded rubber trim around edge giving tight fit with no Flashback
- Available for a variety of makes and models

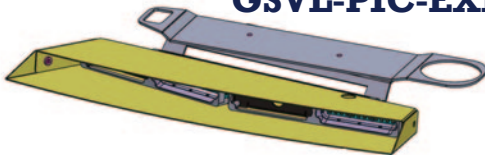
**GSVL-PIC-F150**



**GSVL-IC-CHRGR**



**GSVL-PIC-EXP20**



**GSVL-PIC-TAHOE**



**GSVL-PIC-TAH21**



## WINDSHIELD LIGHT

- Designed to fit as a center mount above the rear view mirror
- Polycarbonate assembly is safer than metal in the event of an accident
- High visibility when activated
- Low profile, lightweight
- Extremely discrete and non-intrusive
- Dual or split module LEDs
- Lightweight and sturdy
- Rated for 100,000 hours of operation
- Multiple Flash Patterns
- Available colours: **AMBER, BLUE, CLEAR, RED, GREEN**
- Dimensions:  
H: 1.3", W: 3.8", D: 1.6"



**MR6-RB-WL**







## TAILGATE EXTERIOR LIGHTBAR

- Rear spoiler molded LED light stick
- Genesis LED technology design
- Multiple flash patterns built-in
- Traffic Director functions available
- 12 LED's per module
- Single/Dual colour modules
- Available for a variety of makes and models of SUV's



### GT2FTL-PIC-EXP20

2020+ Ford Explorer Exterior Tailgate Lightbar



### GT2FTL-IC-TAH15

2015 Chevy Tahoe Exterior Tailgate Lightbar

### GT2FTL-PIC-TAH21

2021+ Chevy Tahoe Exterior Tailgate Lightbar



### GT2FTLV2-PIC-EXP20

2020+ Ford Explorer Exterior Tailgate Lightbar



## LED TRAFFIC DIRECTOR

## GEN. II LED TRAFFIC DIRECTOR



- LED Traffic Director is a Highly visible, caution/directional indicator to oncoming Traffic
- SAE Compliant Class1 J595, J845
- 8 sealed Genesis modules, each module uses 1Watt LED Technology (available on request with different number of modules)
- Internal / External mounting
- Available in **AMBER**, **BLUE**, **RED**, and **CLEAR**
- Available in a kit configuration with AS5500 Touchpad, Electronics Module, cables and Mounting Brackets
- Needs external control system
- Traffic Directors are also available with optional Photo Dimmer Sensor (the sensor functionality depends on the chosen control system)
- Various lengths and colour combinations available

#### Technical Specifications:

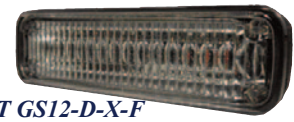
- Input Voltage Range: 11-16 VDC
- Current Draw: 3 Amps max
- Operating Temperature: -30°C to +65°C (-22F to +149F)
- Dimensions: W-48", H-2.0", D-2.2"
- Mounting: Surface mount (brackets included)
- Warranty: Five years

Kit/Part Number	Description	Colour(s)	Length
GT2F12-6TD03-PIC	6 Module Stick	3 <b>BLUE/AMBER</b> , 3 <b>RED /AMBER</b>	36"
GT2F12-8RTD-PIC	8 Module Stick	<b>RED</b>	48"
GT2F12-8ATD-PIC	8 Module Stick	<b>AMBER</b>	48"
GT2F12-8TD03-PIC	8 Module Stick	4 <b>BLUE/AMBER</b> , 4 <b>RED /AMBER</b>	48"

# LED LIGHTS

## GENESIS

- **GENESIS** modules are our newly designed LED lights
- Surface (GS12-S-X-F), Flush (GS12-F-X-F), Deck (GS12-D-X-F) mount LED flashing modules
- These compact modules provide great versatility for a wide range of mounting
- All modules are sealed, waterproof for external mounting applications
- Ideally suited for use as directional or perimeter lighting
- Multiple flash patterns built-in
- Input Voltage: 11-16 VDC Nominal
- Synchronous or alternate operation
- Dimensions:
  - GS12-D-X-F: L-4.0", H-1.0", D-1.25"
  - GS12-S-X-F: L-4.5"(Bottom), L-4.0"(Top), H-1.0", D-1.25"
  - GS12-F-X-F Exposed Dimensions: L-4.5", H-0.5", D-1.25"



DECK MOUNT GS12-D-X-F



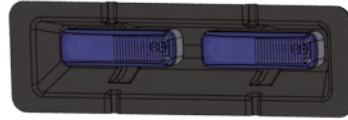
FLUSH MOUNT GS12-F-X-F



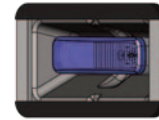
SURFACE MOUNT GS12-S-X-F

- Available in single and split colors: **CLEAR, RED, AMBER, BLUE, GREEN**
- Meets SAE Class 1 Standards
- IP67 Rating

## GENESIS LIGHT SHROUDS



Rear Plastic Genesis Dual Light Shroud (923-0115A)



Single Rear Plastic Genesis Shroud (923-0116A)

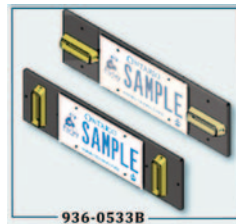
## GENESIS LICENSE PLATE BRACKETS

### 936-0533A

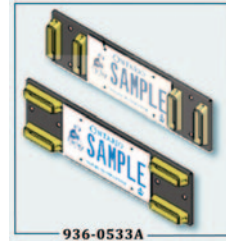
License Plate Bracket for Genesis Surface Mount LED Modules (x4), two options for mounting the modules (horizontal or vertical)

### 936-0533B

License Plate Bracket for Genesis Surface Mount LED Modules (x2), two options for mounting the modules (horizontal or vertical)



936-0533B

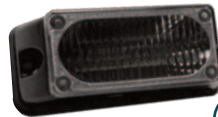


936-0533A

- GS12 modules not included
- Rubber U-Channel along the edges
- Dimensions (936-0533A & 936-0533B)
  - Width: 22.15"
  - Height: 6.16"

## MS6 SYNC LIGHTS

1. MS6-S-X-F Surface Mount 6 LED's Module  
Dimensions: W-3.25", H-1.25", D-1.1"
2. MS6-F-X-F Flush Mount 6 LED's Module  
Dimensions: W-3.25, H-1.5", D-1.0"



1



2

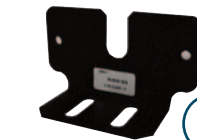


- MS6 LED modules utilize the latest in 1W LED technology
- Ideally suited for use in directional warning solutions
- These compact modules provide great versatility for a wide range of mounting options
- All modules are sealed, waterproof for external mounting applications
- Multiple flash patterns built-in
- Available models:
  - MS6-S-X SINGLE COLOR
  - MS6-S-XX-F DUAL COLOR

X-LED Color:

A-**AMBER**, B-**BLUE**, C-**CLEAR**, R-**RED**

- Current Draw: 0.4A Solid ON  
0.160A Average Pattern ON
- Input Voltage: 12-24 VDC Nominal
- Synchronous or alternate operation
- IP67 Rated
- Meets SAE Class 1



1



2



3



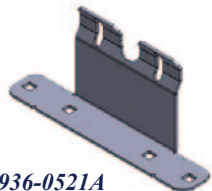
4



5

1. 936-0397A L Bracket, 2" tall, single
2. 936-0398A L Bracket, 2" tall, double
3. 936-0402A L Bracket, 4" tall, triple
4. 936-0400A L Bracket, 4" tall, single
5. 936-0401A L Bracket, 4" tall, double

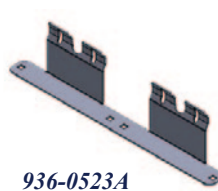
## GENESIS LIGHT MOUNTING BRACKET



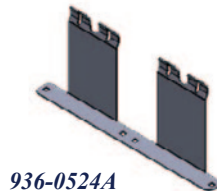
936-0521A



936-0522A



936-0523A



936-0524A



936-0525A

## GR6 LED GRILL LIGHT MODULES

Simply remove the factory grill caps and replace them with D&R's new GR6 light modules. No mounting hardware required, this new product allows for the addition of front end lighting without compromise!



**SPECIFICATIONS:**

- 21 Flash Patterns
- Operation Voltage: DC 12-24V
- Operating Temperature Range: -40° C to +60° C
- Regulation SAE J595 Class 1
- Rating : IP67
- Mount base set P936-0002A
- PY Lights must be listed separately on order

## COMPACT INTERIOR/EXTERIOR LED LIGHT HEADS

### PY-9600 SEALED SURFACE MOUNT

- Mounting: Two Hole Through Base
- Size: 3-25/32"L x 1-19/32"W x 1-7/64"H
- Voltage: 12 – 24VDC
- LEDs: 3
- Rating: IP67
- Compliance: SAE Class I
- Flash Patterns: 23
- Aluminum Base / Clear Polycarbonate Lens



### PY-9630 SEALED SURFACE MOUNT

- Mounting: Two Hole Through Base
- Size: 2.90"L x 0.95"W x 0.60"H
- Voltage: 12 – 24VDC
- LEDs: 3
- Rating: IP67
- Compliance: SAE Class I
- Flash Patterns: 16
- Aluminum Base / Clear Polycarbonate Lens



### PY-9672 THIN SEALED SURFACE MOUNT

- Mounting: Two Hole Through Base
- Size: 4.64"L x 1.14"W x 0.44"H
- Voltage: 12 – 24VDC
- LEDs: Single 9 / Dual 12
- Rating: IP67
- Compliance: SAE Class I
- Flash Patterns: Single Colour 14 / Dual Colour 40
- Aluminum Base / Clear Polycarbonate Lens



### PY-9674 ULTRA-THIN SEALED SURFACE MOUNT

- Mounting: Two Hole / HD Adhesive
- Size: 3.58"L x 1.10"W x 0.29"H
- Voltage: 12 – 24VDC
- LEDs: 6
- Rating: IP67
- Compliance: SAE Class I
- Flash Patterns: 22
- Aluminum Base / Clear Polycarbonate Lens



Model	Name/Description	Colour (X*)
PY-9600-X*	Sealed Surface Mount, Single Colour	<b>BLUE</b> (B), <b>RED</b> (R)
PY-9630-X*		
PY-9672-X*	Thin Sealed Surface Mount, Single Colour	<b>AMBER</b> (A)
		<b>RED</b> (R)
		<b>BLUE</b> (B)
		<b>CLEAR</b> (C)
PY-9672-DUAL- X*/X*	Thin Sealed Surface Mount, Dual Colour	<b>AMBER / CLEAR</b> (A/C)
		<b>RED / CLEAR</b> (R/C)
		<b>RED / BLUE</b> (R/B)
		<b>BLUE / CLEAR</b> (B/C)
PY-9674-X*	Ultra-Thin Sealed Surface Mount, Single Colour	<b>AMBER</b> (A)
		<b>RED</b> (R)
		<b>BLUE</b> (B)
		<b>CLEAR</b> (C)

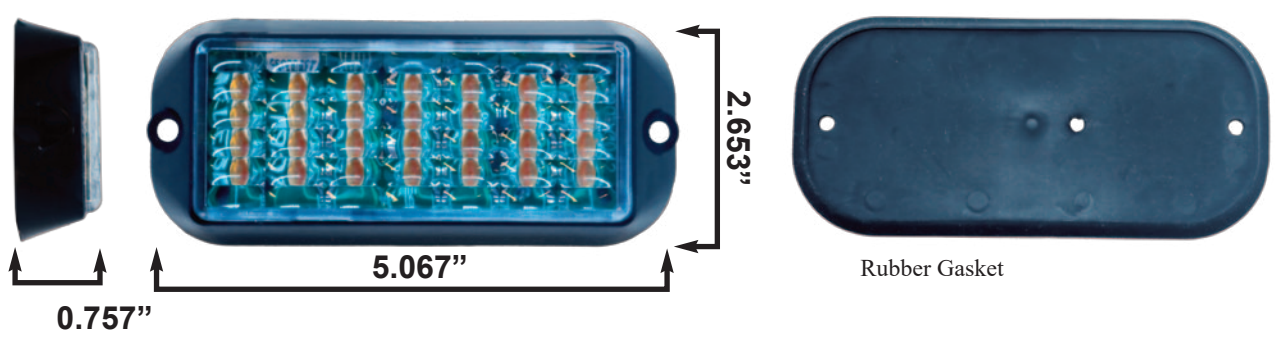


## LBSF-X LITEBRITE LED SURFACE MOUNT

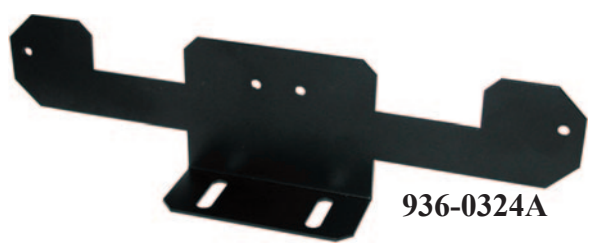
- LITEBRITE LED light modules utilize the latest in GEN II LED technology
- Ideally suited for use as a directional warning solution.
- Featuring a much narrower housing
- Provide even greater versatility for a wide range of mounting options.
- The surface mount format facilitates mounting solutions where the unit cannot be embedded in the mounting surface.
- All modules have a built-in flasher and are sealed for external mounting applications.
- Dimensions (with Rubber Gasket):  
Length-5.411", Width-2.653", Depth-0.825"
- Dimensions (without Rubber Gasket):  
Length-5.067", Width-2.295", Depth-0.757"
- Voltage Rating: 12V
- Available w/black (LBSF-X\*) polycarbonate base and clear lense with UV protection



\*X - Available Colours: **AMBER**, **CLEAR**, **BLUE**, **RED**



### MOUNTING BRACKETS



936-0324A



936-0302A

### LED INSERT LIGHTS

- LED Elements - 12, Ultra Small
- Virtually No RFI/EMI noise emitted
- Meets SAE J1113-41 Class 5
- Die-Cast aluminum base
- Dimensions: Base Diameter-1.50", H-0.8"
- Available colors: **CLEAR**, **RED**, **AMBER**, **BLUE**
- Available in split **RED/BLUE** color
- Safe Low Voltage Wiring
- Includes Pre-Wired 10' cable
- Over 30 Flashing Patterns
- IP67 Rating



**SL12IL-X  
LED INSERT**

**Black Bezel - to securely mount your LED light to a flat surface (300-0104)**





## IQ ELITE PRO SYSTEM

- High Performance Class D amplifier module.
- CAN Bus Communications
- Close Proximity Vehicle to Vehicle Light and Siren Synchronization.
- Program and control all features of your vehicle: lights, sirens, traffic director, Message boards.
- Easy to use configuration software.
- All outputs have short circuit, reversed polarity and over-current protection.
- Supports up to 32 environment sensors.
- 12 fully programmable digital inputs (+12VDC or GND)
- 2 fully programmable Analog inputs
- Integrated battery voltage monitor
- Programmable for hands-free operation
- 21 Outputs max 12 Amps programmable from 1 to 100% power outputs.
- Supports unlimited expander modules, each module has 10 outputs. each line can control up to 255 level of intensity on 3 lights. Individual light control.
- Any Output can be programmed to be controlled by more than one button, Input or Temperature sensor using an intuitive function priority, as well as for Traffic Director Control.
- Choice of 7 Control Heads—Control Head Keys are Full Color RGB Backlit, different colors possible for backlight, Key Press, and sequential keys.
- 255 Level Dimmer Control for push button or backlight on all keys
- Each button or input can be programmed to be ON/OFF, Momentary, Cycle, Timer Trigger, Double Click Short and Long Click.
- Built-in shut down to be able to operate the system for up to 13 hours after vehicle is turned OFF .
- Zero stand-by current consumption after timed shut down.
- System level programmable Low Voltage Disconnect.
- Programmable voltage threshold activation button group .
- Standard siren tones (WAIL, YELP, STINGER, HI-LO, AIR HORN) and INTER-CLEAR (multi-tone) can also accept WAV or MP3 Files .
- Air Horn momentary push button overrides all other siren tones.
- All control outputs are solid state outputs.
- 2 line color very low consumption OLED status display on certain touch pad.
- All outputs have diagnostic indicator LEDs for quick troubleshooting
- Any switch programmable for SHOTGUN timed out release
- All programs may be modified and stored for ease of service, with a simple export/ import process
- Custom labels, easy to replace w/spill proof membrane
- Digital Microphone with Crystal Clear sound with AGC
- Radio rebroadcast function
- Built-in and programmable flash-patterns
- Power and input/output cabling with connectors, standard
- All fuses and connectors easy accessible without removing covers
- Built-in beep alert, adjustable via software
- 3 built-in data connections
- Meets and exceeds all applicable SAE, California Title XIII, NFPA requirements with select D&R speakers, control and light heads
- Five Year Warranty

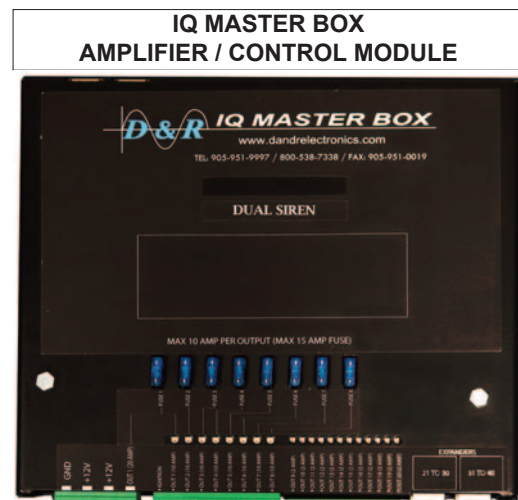


**IQ PRO-TP Slide 21**



# IQ SERIES LIGHT / SIREN CONTROL SYSTEM

- Full function amplifier/control module
- Program and control all features of your vehicle: lights, sirens and traffic director
- Easy to use Windows configuration software
- All outputs have short circuit, reversed polarity and over-current protection
- Supports up to 3 temperature sensors modules
- 13 fully programmable analog inputs (+12VDC or GND)
- Integrated battery voltage monitor
- Single or Dual Siren Amplifier
- Programmable for hands-free operation
- Outputs: 12 @ 2Amp/ 8 @ 10Amp/ 1 @ 20Amp
- **Supports up to two Expander modules**, 10 outputs each
- Any output can be programmed for traffic director control
- Any output can be programmed to be controlled by more than one button, input or temperature sensor using an intuitive function priority system
- Supports 7 styles of control head keypads
- Three level dimmer control for push button backlight
- Each button or input can be programmed to be an ON/OFF, Momentary, Cycle or Timer trigger
- Built in shut down system to be able to operate the system for up to 13 hours after vehicle is turned OFF
- Zero stand-by current consumption after timed shut down
- System level programmable Low Voltage Disconnect
- Programmable button group voltage threshold activation
- Standard siren tones (WAIL, YELP, STINGER, HI-LO, AIR HORN) and INTER-CLEAR (multi-tone)
- Air Horn momentary push button overrides all other siren tones
- All control outputs are solid state outputs
- 3 line color very low consumption OLED status display
- All outputs have diagnostic indicator LEDs for quick troubleshooting
- Any switch programmable for SHOTGUN timed out release
- All programs may be modified and stored for ease of service, with a simple export/import process
- USB port on each touchpad provides easy access for programming the system
- Custom labels, easy to replace w/ spill proof membrane
- PA microphone w/ plug in connector and 21' cable included
- Radio rebroadcast function
- Built-in and programmable flash-patterns
- Power and input/output cabling with connectors, standard
- All fuses and connectors easy accessible without removing covers
- Built-in beep alert, adjustable via software
- 3 built in data connections
- Meets and exceeds all applicable SAE, California Title XIII, NFPA requirements with select D&R speakers, control and light heads
- Five Year Warranty



## IQ EXPANDER MODULES

**IQEXP-LC**  
**Low Current Expander**



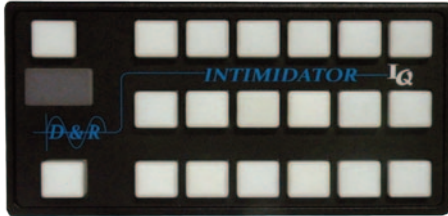
**IQEXP-HC**  
**High Current Expander**







**F5M-IQTP**



■ Dimensions:  
H: 3-1/2", W: 7-3/16", D: 1.0"

**F5S-IQTP**



■ Dimensions:  
H: 3-1/2", W: 7-3/16", D: 1.0"

**F5RM-IQTP**



■ Dimensions:  
H: 3-1/2", W: 7-3/16", D: 1.0"

**F5RS-IQTP**



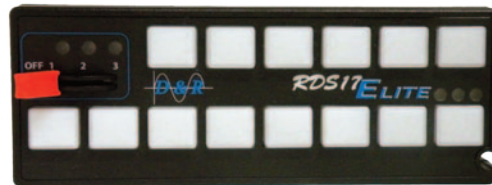
■ Dimensions:  
H: 3-1/2", W: 7-3/16", D: 1.0"

**RDS16S-ETP**



■ Dimensions:  
H: 2-1/2", W: 6-3/4", D: 1.0"

**RDS17S-ETP**



■ Dimensions:  
H: 2-1/2", W: 6-3/4", D: 1.0"

**GALAXY-IQTP**



■ Dimensions:  
H: 2-3/4", W: 4-7/16", D: 1.0"

## LIGHT & SIREN CONTROLLERS

### ENFORCER UNDERCOVER SIRENS



**ES6200-IQ**



- ES6200-IQ siren uses microprocessor based technology to provide a compact electronic siren system for use in emergency vehicles
- Ideal choice for undercover applications
- Siren Mode - two available siren tones: Wail and Yelp
- Siren tones can be selected using the toggle switch from the remote controller
- Manual Mode - Air Horn
- Park Kill Mode - this will automatically interrupt the siren tones if they are engaged; this input is GND activated.

**ES6201-IQ**



- ES6201-IQ siren uses microprocessor based technology to provide a compact electronic siren system for use in emergency vehicles
- Ideal choice for undercover applications
- Siren Mode - two available siren tones: Wail and Yelp
- Manual Mode - Air Horn
- Note: Manual mode will override the Siren mode
- Park Kill Mode - this will automatically interrupt the siren tones if they are engaged; this input is GND activated.

### PROTEC FALCON PFIQ



**General Specifications:**

- Two models: PFIQ-12 and PFIQ-24
- Input Voltage:  
PFIQ-12: 11 to 16 VDC  
PFIQ-24: 22 to 28 VDC
- Input Fuse:  
60 amps (external) for 12VDC  
30 amps (external) for 24VDC
- Operating Temperature Ranges: -30°C to +65°C
- Standby Current:  
50mA ± 10% during IGNITION OFF time-out  
0ma after time-out

**Siren:**

- Frequency Range: 700 to 1640 Hz (nominal)
- Audio Output Power: 32 watts
- Amplifier Output Impedance: 11 Ohms
- Input Impedance: 600Ω (radio)

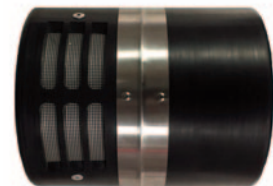
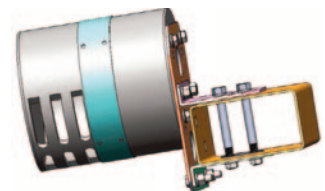


### THUNDER:

#### AUXILIARY LOW FREQUENCY WARNING SYSTEM

- Models:  
THUNDER-1 Kit includes  
1 x TH-LFA (Thunder Low Frequency Amplifier Siren Box)  
1 x 189-0200 (Thunder Speaker)  
THUNDER-2 Kit includes  
1 x TH-LFA (Thunder Low Frequency Amplifier Siren Box)  
2 x 189-0200 (Thunder Speaker)
- Universal Mounting Bracket or optional vehicle specific mounting brackets available
- An add-on to any 100/200 watt siren system to boost vehicle sound
- Compatible with all vehicles primary siren tones
- Low frequency siren amplifier and speaker included
- Uses the primary siren speaker output

**935-0082A  
Speaker Bracket  
to mount Thunder  
speaker**



## SPEAKERS & SPEAKER BRACKETS

### DRCS100



- DRCS100 is one of D&R's most innovative cast 100 W speakers
- Includes bail bracket
- Exceeds Class A SAE J1849 requirements
- Dimensions: W-6.5", H-5.375", D-3.0"

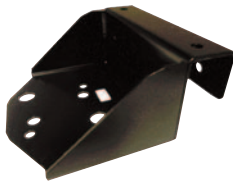
- Exceeds Class A, SAE J1849 requirements
- Dimensions: W-6.85", H-6.35", D-2.78"
- All weather nylon composite black housing with front loaded 100W speaker driver

### DRCS110



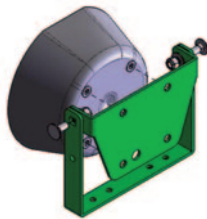
### AVAILABLE SPEAKER BRACKETS:

#### 935-0067A



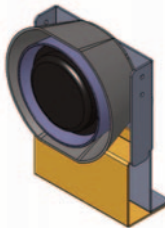
- Single push bar speaker bracket
- Bracket for DRCS110

#### 935-0079A



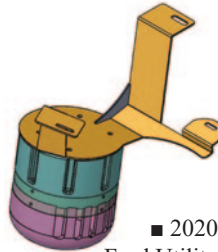
- Universal bracket to mount DRCS110

#### 935-0094A



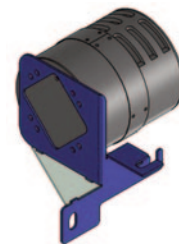
- 2020 Ford Utility DRCS110 110 Speaker Bracket behind grill

#### 935-0095A



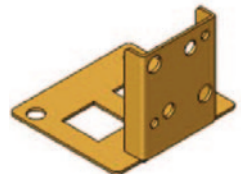
- 2020 Ford Utility Thunder Speaker Bracket

#### 935-0086A



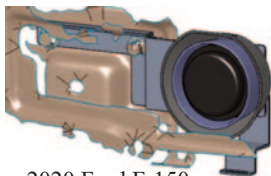
- 2020 Ford F-150 Thunder Speaker Mounting Bracket

#### 935-0076A



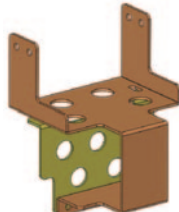
- 2020 Ford F-150 Eco-Boost DRCS110 Speaker Mounting Bracket

#### 935-0075A



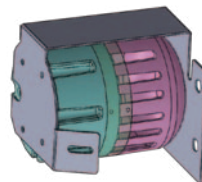
- 2020 Ford F-150 DRCS110 Speaker Mounting Bracket

#### 935-0070A



- 2020 Dodge Caravan DRCS100 Speaker Mounting Bracket
- Use with 935-0066A Adapter Bracket to mount DRCS110

#### 935-0098A



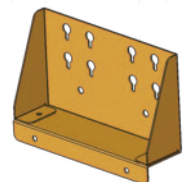
- 2016-2021 Dodge Durango Pursuit Thunder Speaker Bracket

#### 935-0069A



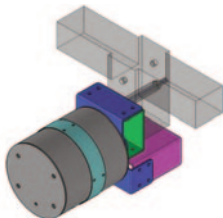
- 2020 Dodge Durango DRCS110 Speaker Mounting Bracket

#### 935-0054A



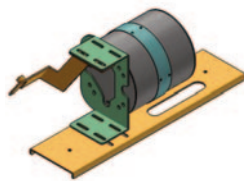
- Dual DRCS110 Push Bumper Mount

#### 935-0084A



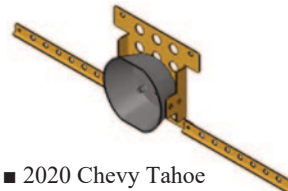
- 2020 Dodge Ram 1500 Thunder Speaker Mounting Bracket

#### 935-0089A



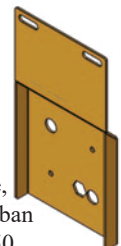
- 2020 Chevy Tahoe Thunder Speaker Mounting Bracket

#### 935-0071A



- 2020 Chevy Tahoe DRCS100/DRCS110 Speaker Mounting Bracket

#### 935-0099A



- 2021-2023 Chevy Tahoe, Chevy Suburban and Ford F150 DRCS110 Speaker Mounting Bracket



## FLASHERS & MODULES

### FS2000-S

- Basic general purpose relay flasher.
- 16 Amp/100W



### FS2100-S

- General purpose solid state flasher.
- 16 Amp/100W



### FS2200-S

- Multi-mode solid state headlight flasher.
- DRL compatible



### FS2600-S

- Tail light flasher
- Flashes tail lights against reverse light
- Includes brake/tail light blackout mode



### ANTI-THEFT MODULE (ADT30A)

- Automatic Anti-Theft module
- Activation upon door opening
- Can NOT be used with Push Button Start



## OEM DRL DEFEAT MODULE

### DRLDF-PIU DEFEAT FLASHER MODULE

#### FEATURES

The DRLDF-PIU Flasher Module is a compact state of the art module designed to defeat the DRL and marker lights for Ford Interceptor Utility 2022+ models.

- Easy plug and play install No cutting or soldering required.
- Same connectors as OEM
- Defeat works only when OEM light switch is in the off position.



## BATTERY WATCHDOG

D&R WATCHDOG is designed to enable operation of vehicle accessories with the vehicle shut off without fear of battery drain inhibiting engine start. Reducing unnecessary idling promotes fuel cost savings and reduces maintenance. Allows for a safe and simple way to add electronic accessories to any of today's complex automotive electrical systems providing the security of an isolated ignition power source with an adjustable off delay. By using a D&R WATCHDOG battery protector you no longer need to worry about having a drained battery or leaving your key in the ignition to keep needed electronics powered up.

### WATCHDOG-B60



#### SPECIFICATIONS

- Operating Voltage: 9V - 18V
- Low Voltage Disconnect: 11.5V \*
- High Voltage Disconnect: 18V
- Stand-by Current: 8 mA
- Operating Current: 350 mA+LOAD
- Min. Time Delay: 2 min.
- Override Time Delay: 2 min..
- Max. Load Current (with correct gauge wire)
- Watchdog-B60: 60A
- Watchdog-B120: 120A
- Selectable Time Delay: 2 min.-13hrs.

### WATCHDOG-B120



\*NOTE: Voltage disconnect (threshold voltage) is where the watchdog takes action. The operating voltage is the range where watchdog monitoring circuit operates regardless of the action taken by the watchdog.



**YOUR POWER SOURCE & BATTERY MANAGEMENT FOR ALL YOUR EQUIPMENT**

The PDU-16SS and PDU-6SS provide a direct, easily traceable route to the input power source avoiding interfering with the vehicles factory wiring harnesses.

Features:

- Programmable Low Battery Voltage Shutdown
- Programmable Timed Shutdown
- Zero current consumption in Sleep Mode

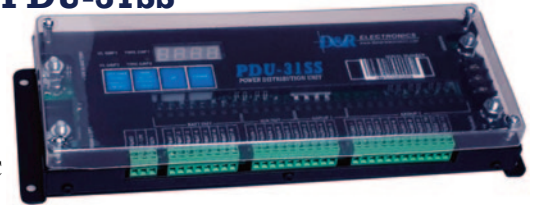
**PDU-16SS**



**Specifications:**

Voltage Range: 11-18 VDC  
 Maximum Current Load:  
 10A per output at 15A  
 30A for heavy duty output, fused at 50A  
 100A total maximum current per PDU  
 Standby Current: 30mA  
 Sleep Mode: 0mA  
 Dimensions: L-10.55" / W-4.26" / H-1.1"

**PDU-31SS**



**Specifications:**

Voltage Range: 11-18 VDC  
 Maximum Current Load:  
 10A per output at 15A  
 30A for heavy duty output, fused at 50A  
 100A total maximum current per PDU  
 Standby Current: 0mA  
 Sleep Mode: 0mA  
 Dimensions: L-12.0" / W-4.0" / H-1.5"

**PDU-6SS**



**Specifications:**

Voltage Range: 11-18 VDC  
 Maximum Current Load:  
 10A per output at 15A  
 25A for heavy duty output, fused at 40A  
 50A total maximum current per PDU  
 Standby Current: 30mA  
 Sleep Mode: 0mA  
 Dimensions: L-5.3" / W-4.26" / H-1.1"

**PDU-2SS-12**



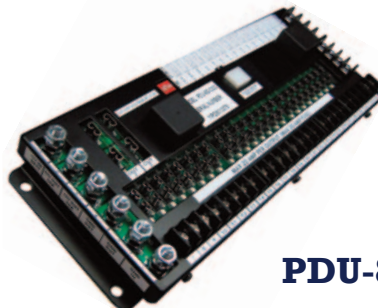
**Specifications:**

Voltage Range: 12-24 VDC  
 Maximum Current Load:  
 40A at output 1  
 20A at output 2  
 Standby Current: 25mA  
 Sleep Mode: 0mA  
 Dimensions: L-4.35" / W-2.5" / H-1.25"

- Organizes vehicle wiring runs
- All power connections at one central location
- Provides direct power, ignition power and timed power
- Easy installation, easy connection of accessory equipment
- Visual condition of circuits
- Make a safer electrical connection to vehicles
- Built-in battery Watchdog (battery discharge protector)
- Fast and reliable vehicle installations



**PDU14-K**



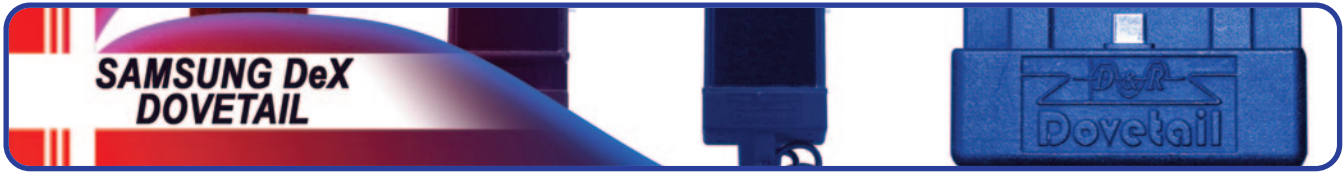
**PDU-8S**



**PDU42WB**

GENERAL INFORMATION ABOVE, FOR DETAILS ON EACH MODEL, VISIT OUR WEBSITE





Dovetail is a universal mounting solution supporting the changing Galaxy Smart phone environment.

A mounting solution that enables docking various models of Galaxy Smart phones, without modifications.

Provides charging to smartphones.

Enjoy a vivid video experience

HD+,FHD, and WQ HD resolutions



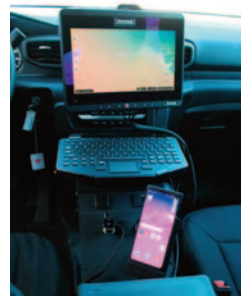
■ Phone easily docks in and connects

Change the default speakers from your mobile device to a monitor, or other audio devices

Allows for dual screen display



**DESKTOP UNIT**



**VEHICLE UNIT**



**AVAILABLE PHONE CASES:**

**N9**

**N10+**

**S9**

**S10**

**S10e**



**S20Fe**

**S21**

**S22**

**S22 ULTRA**

**XC6**



■ Phone cases separate and attach

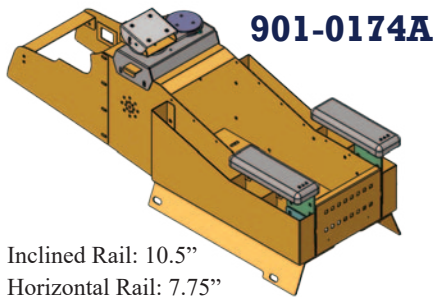




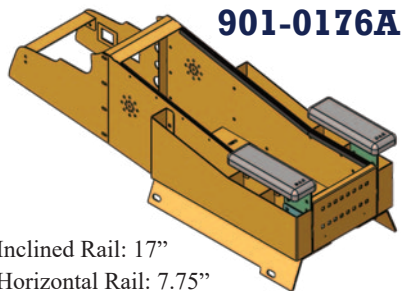
## GEN. I VEHICLE SPECIFIC EQUIPMENT CONSOLES

### 2021-2023 Chevrolet Tahoe

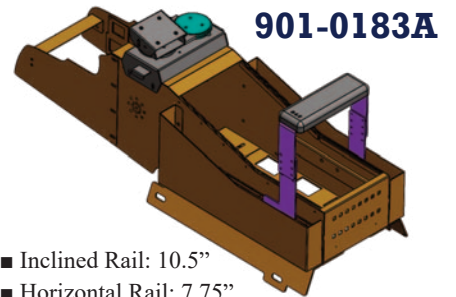
- Arm Rest 904-0135A (Sold Separately)
- Console Pocket PS - 801-0596A (Sold Separately)
- Accommodates the LT7600 (not included)
- Floor Plate not required for installation



- Inclined Rail: 10.5"
- Horizontal Rail: 7.75"
- Console Width (Outer Dimension): 8.4"

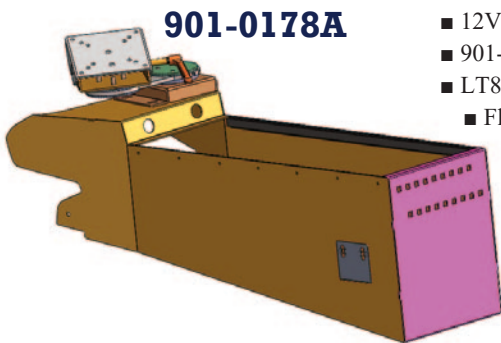


- Inclined Rail: 17"
- Horizontal Rail: 7.75"
- Console Width (Outer Dimension): 8.4"



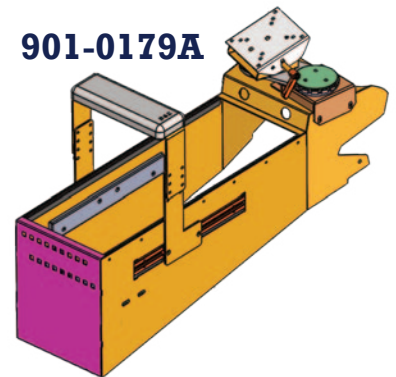
- Inclined Rail: 10.5"
- Horizontal Rail: 7.75"
- Console Width (Outer Dimension): 8.4"

### 2021-2023 Dodge Durango Police Pursuit Vehicle

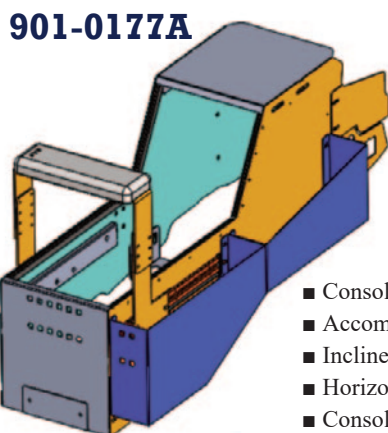


**901-0178A**

- 12V Outlet x 2 included
- 901-0179A comes with Sliding Armrest
- LT8650 Swivel Arm (906-0969A) Not Included
- Floor Plate not required for installation
- Horizontal Rail: 21.75"
- Console Width (Outer Dimension): 8.4"



**901-0179A**

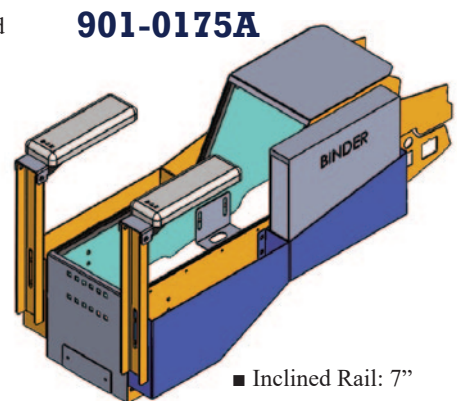


**901-0177A**

### 2021-2023 Ford F150

- Front PS Side Pocket (801-0796A) included
- Rear PS Side Pocket (801-0797A) included
- Floor Plate not required for installation

- Console with sliding armrest
- Accommodates the LT7600 (not included)
- Inclined Rail: 7"
- Horizontal Rail: 14.75"
- Console Width (Inner Dimension): 8"

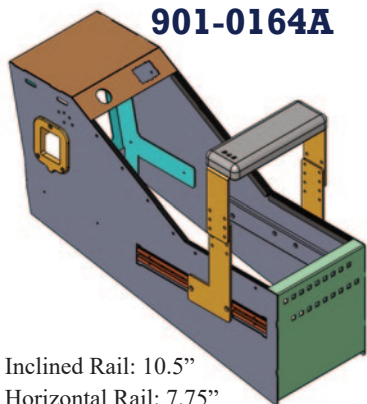


**901-0175A**

- Inclined Rail: 7"
- Horizontal Rail: 14.75"

## 2021-2023 Ford Interceptor Utility

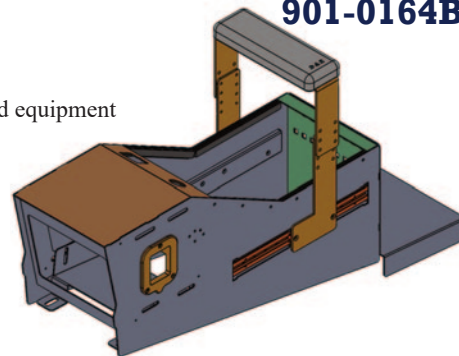
**901-0164A**



- Inclined Rail: 10.5"
- Horizontal Rail: 7.75"
- Console Width (Inner Dimension): 8"

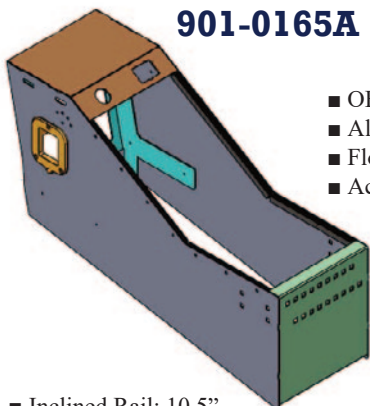
- Console with sliding armrest
- OEM USB & 12V Outlet Mounting
- Allows for mounting up to 5 pieces of remote head equipment
- Floorplate not required to install this console
- Accommodates the LT7600 (not included)

**901-0164B**



- Inclined Rail: 7.75"
- Horizontal Rail: 7.75"
- Console Width (Inner Dimension): 8"

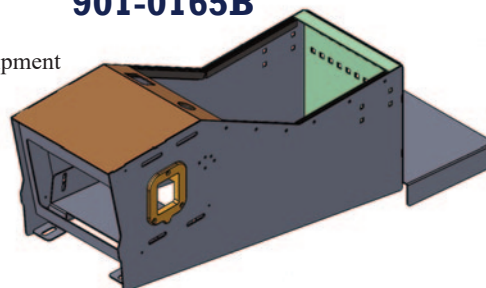
**901-0165A**



- Inclined Rail: 10.5"
- Horizontal Rail: 7.75"
- Console Width (Inner Dimension): 8"

- OEM USB & 12V outlet mounting
- Allows for mounting up to 5 pieces of remote head equipment
- Floorplate not required to install this console
- Accommodates the LT7600 (not included)

**901-0165B**



- Inclined Rail: 7.75"
- Horizontal Rail: 7.75"
- Console Width (Inner Dimension): 8"

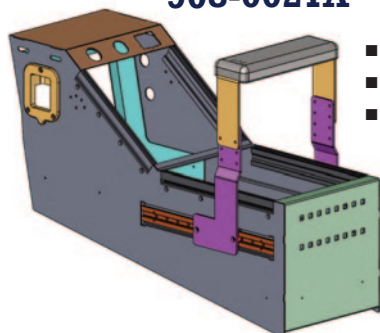
---

## GEN. II WIDER CONSOLES

---

## 2020 Ford Interceptor Utility

**908-0021A**

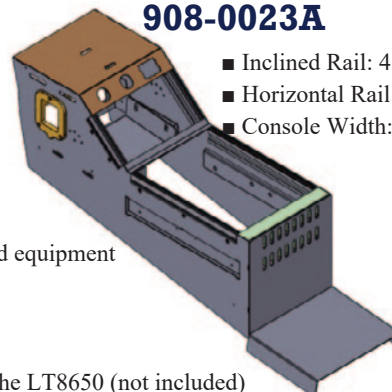


- Accommodates the LT7600 (not included)

- Inclined Rail: 8.5"
- Horizontal Rail: 10.5"
- Console Width: 8.63"

- Designed to fit 2020 Ford Interceptor Utility
- OEM USB & 12V outlet mounting
- Allows for mounting up to 5 pieces of remote head equipment
- Floorplate not required to install this console

**908-0023A**



- Accommodates the LT8650 (not included)

- Inclined Rail: 4.5"
- Horizontal Rail: 11.5"
- Console Width: 8.63"

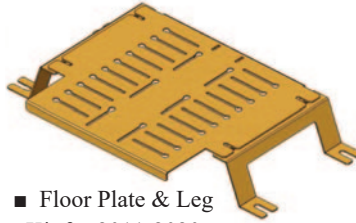


**905-0130A**



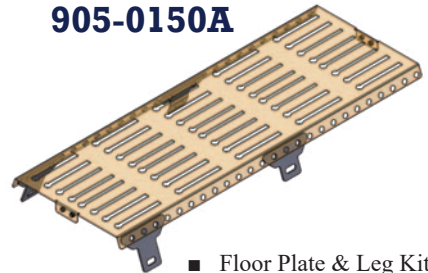
■ Floor Plate and Legs designed for 2015-2020 Chevy Tahoe

**905-0106A**



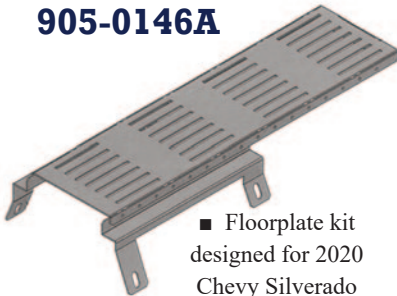
■ Floor Plate & Leg Kit for 2011-2020 Chevy Express

**905-0150A**



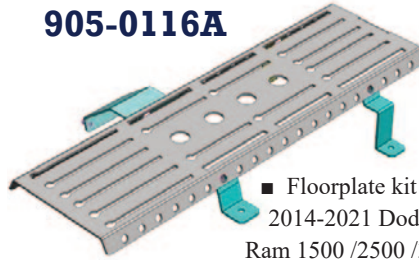
■ Floor Plate & Leg Kit designed for 2021 Chevy Tahoe and Chevy Suburban

**905-0146A**



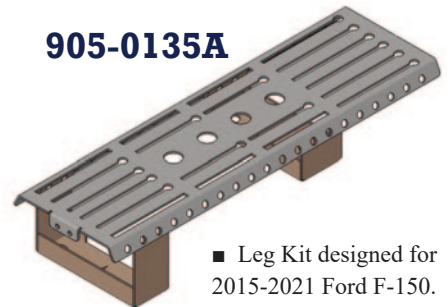
■ Floorplate kit designed for 2020 Chevy Silverado

**905-0116A**



■ Floorplate kit for 2014-2021 Dodge Ram 1500 /2500 /3500

**905-0135A**



■ Leg Kit designed for 2015-2021 Ford F-150.

**905-0148A**



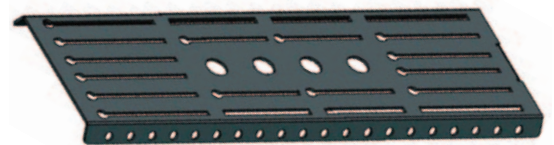
■ Floorplate Kit designed for 2020 Ford Interceptor Utility

**905-0142A**



■ Floor Plate & Leg Kit designed for 2017+ Ford Transit 250 Van

**FLMNT-29W**



The floor plate kit uses D&R leg kit system which anchors to factory seat bolts, eliminating the need for drilling holes in the floor. This format provides versatility in mounting any combination of console and laptop mounts in different vehicle types.

---

## MAGNETIC MIC KIT

---

Magnetic Mic Helps You Stay Focused on the road when picking up and returning the radio mic to its holder. It's the easy to install alternative to a conventional metal hang-up mic clip, consisting of a Magnetic Base for the vehicle dashboard or console and a disc-shaped Microphone Adapter for the mic itself.

The magnetic base replaces the conventional metal hang-up mic clip used with most two-way radio microphones. With its sleek unibody construction, there are no sharp edges for the user to worry about. Constructed from aerospace grade materials, Magnetic Mic is incredibly durable and ready for years of use.

**HOW IT WORKS?**

Magnetic Mic enhances safety by reducing distracted driving. This easy-to-use conversion kit helps drivers stay focused on the road when picking up and returning a CB or emergency radio microphone to its holder.





**ARMRESTS**

**904-0158A**



Console mount  
Armrest  
with D&R  
logo pad

**904-0159B**



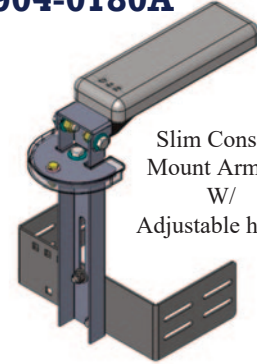
Slim Floor Mount  
Armrest with  
D&R logo pad

**904-0135A**

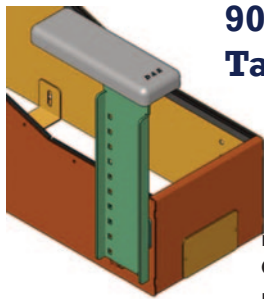


Soft molded rubber  
Side mounting Console  
Armrest-Driver Side  
**904-0136A** Passenger Side

**904-0180A**

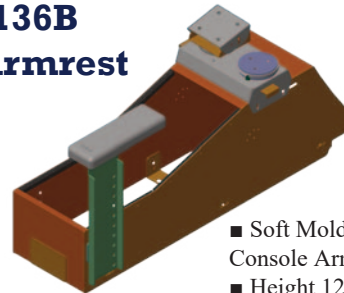


Slim Console  
Mount Armrest  
W/  
Adjustable height



**904-0135B  
Tall Armrest**

- Soft Molded Rubber Side Mounting Console Armrest - Driver Side.
- Height 12.985 inches to top of armrest



**904-0136B  
Tall Armrest**

- Soft Molded Rubber Side Mounting Console Armrest - Passenger Side.
- Height 12.985 inches to top of armrest

**CA-0211**



- Printer Armrest designed to enclose and protect the Pocket Jet printer & paper spool
- Compact and ideally suited to mount in the confined space between the driver and passenger seats of all mid and full sized vehicles
- CA-0210 is same as CA-0211 but mounts to the back of the D&R console  
*Printer not included.*

**CA-0115**



Adjustable  
armrest,  
mounts to rear  
of console

**LED MAPLIGHT**



**CA-0128 / CA-0129 / CA-0130**

- Available in: 6", 12" and 18" lengths
- 3 Phase light intensity 1 Watt LED (Low, Medium, High)
- Available in 12 /24V
- 280 degree Turning Radius
- 1 Watt Red and White LED
- **USB plug option available:**  
CA-0128-USB, CA-0129-USB, CA-0130-USB



## STORAGE POCKETS

CA-0104



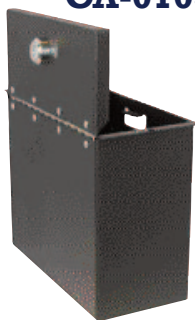
- Ticket book holder
- Design to mount in console
- Dimensions: L-3.5", W-8.0", H-6.25"

CA-0104S



- Ticket book holder
- Design to mount in console
- Dimensions: L-3.5", W-8.0", H-3.0"

CA-0105



- Ticket book holder with keyed locking lid
- Design to mount in console
- Dimensions: L-3.5", W-8.0", H-6.0"

CA-0105S



- Ticket book holder with keyed locking lid
- Design to mount in console
- Dimensions: L-3.5", W-8.0", H-3.0"

CA-0105M2



- Storage pocket / Ticket book holder
- Design to mount in console
- Dimensions: L-10.5", W-8", H-6.25"

## POWER OUTLETS

CA-0101



- Dual outlet 12V power accessory
- Individually switched, fused and backlit
- 15 Amp max per output

14.0553



- Triple outlet 12V power accessory accomodates most auxiliary devices like spot lights, air compressors, laptops and radios
- 15A automatic re-set circuit breaker provides overload protection
- Sturdy, fully enclosed, black ABS plastic box
- Includes a 3' wire for simple installation.
- Dimensions: L-6.0", W-1-5/8"

CA-0103



- Triple outlet 12V power accessory
- Mounts in console.
- Dimensions: L-8.0", W-3.5"
- CA-0103S Dim: L-8.0", W-1.5"

CA-0108



- Power Plate
- Dual USB
- Two 12V outlets
- Installs in console
- Dimensions: L-8.0", W-1.75"

## CUPHOLDERS

CA-0107LS



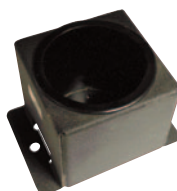
- Dual cupholder (one regular size cup and one large cup)
- Mounts in console
- Dimensions: L-4.25", W-8.0"

CA-0107



- Dual cupholder (regular cup size)
- Mounts in console
- Dimensions: L-3.5", W-8.0"

904-0148A



- Single Large cupholder
- Mounts to floor plate or flat surface
- Dimensions: L-4.31", H-3.31"

CA-0117L



- Dual cupholder w/two large cups
- Mounts to floor plate or flat surface
- Dimensions: L-5.69", W-8.56"

CA-0117



- Dual cupholder with two regular cup size
- Mounts to floor plate or flat surface
- Dimensions: L-4.88", W-8.0"



## LAPTOP/TABLET MOUNTS

### LT7600-B



- Secures to top of D&R Console
- Dual 360 Degree swivels allow the computer to swing from the driver to the passenger seat
- LT7600-B accepts all D&R computer specific trays, universal trays and popular keyboard trays
- Tilt adjustment allows the user to tilt the computer to a comfortable working position
- LT7600-A Same as LT7600-B but with locking pin

## LT6600 SERIES MULTI-ADJUSTABLE LAPTOP/TABLET HD MOUNTING PEDESTALS

- LT6600 Passenger Side Mount connects to the passenger seat bolts with the use of a vehicle specific mounting plate
- Full featured computer mount with height, tilt, dual 360 swivel and extension adjustments
- Utilizes laser cut swivel components to provide a compact unit ideal for small to full size cars and SUV's
- The LT6600 accepts all D&R laptop or specific trays and universal trays

### FUNCTIONALITY:

- Height Adjustment: height can be set by the user:  
LT6600-A from 13.5"- 21.50"
- Extension Adjustment: this adjustment allows the user to tilt move the computer towards or away from their reach to a comfortable working position (12"-16")
- All mounts include braces for mount support
- LT66MK Mounting Kits available for a variety of vehicles



### MOUNTING EXAMPLES:

#### LT66MK 2021 Chevy Tahoe Floor Mount (906-0986A)

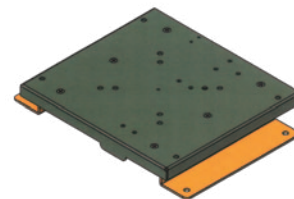


- LT6600 sold separately
- Comes with two Tie-Down Strap Mounts

#### LT8650 Adjustable Rail Mount (906-0969A)



#### Slide Tray Low Profile Flat Surface Mount (906-0968A)



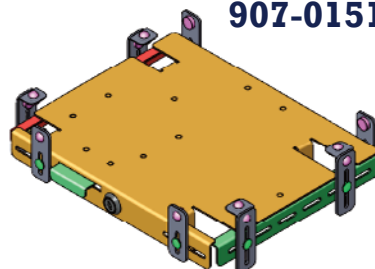
## LAPTOP/TABLET TRAYS

### 907-0281A



Clamshell Panasonic FZ-G1 Tablet Dock with  
iKey SB-87-TP-M USB Keyboard Tray.

### 907-0151D



Universal locking tray 14+ sized laptops



## DOCKING STATIONS

### Docking Station Features:

- Designed using MIL-STD-810F requirements
- Floating docking connector for easy docking alignment
- Internal protected circuit board
- Compression latch
- Plastic end caps to prevent sharp corners
- Brass machined pins for ease of computer placement
- Lockable keyed alike
- Pre-drilled holes aligned for use on all D&R mounts

### CF33



### Ports:

- Built-with CF33 Tablet
- Serial: DB9 (9-PIN) connection (2)
- VGA: (1)
- USB:
  - Fully-powered USB 2.0 (4)+(1 Front panel)
  - USB 3.0
- Ethernet: RJ45 Ethernet (2)
- Headphone / Speaker: Stereo (1)
- Noise filtering: Yes
- Input Voltage: 15.6V DC
- Dual antenna coaxial connection
- Built-in DC power supply:
  - 10-24VDC Input,
  - 15.6VDC Output
- Includes 6" input cable w/cigarette lighter plug adapter
- 16Amp built-in fuse

### CF54



- Serial Port: DB9 (9-PIN) connection (1)
- VGA: (1)
- USB:
  - Fully-powered USB 2.0 (2)+USB 3.0 (2)
- Ethernet: RJ45 Ethernet (1)
- Headphone / Speaker: Stereo (1)
- HDMI Port (1)
- Input Voltage: 15.6V DC
- Dual antenna coaxial connection
- Built-in DC power supply

## DS100 POWER SUPPLIES



### Power Supply

- Dimensions: 1.0"H x 5-14/16"L x 2.25"D
- Output is -15.6V DC
- Input is -6V to +24V DC
- Optional Universal DC I/P Power Supply
  - Internal: Direct wired to PCB
  - External (as shown)
- Required cables are included with the Power Supply

### Available Power Supplies:

- DS100-12V
- DS100- 15.6-8A
- DS100-16V
- DS100-20V

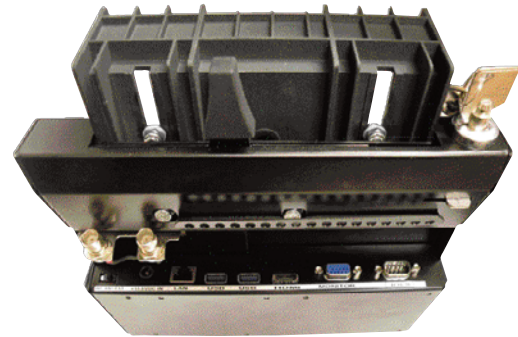
## PANASONIC FZG1 DOCK



- 16V external power supply
- Designed using MIL-STD-810F requirements
- Floating docking connector for easy docking alignment
- Internal protected circuit board
- Compression latch
- Brass machined pins for ease of tablet placement
- Available with a G1 handstrap model
- Rugged steel with black powder coat finish
- Lockable keyed alike
- Pre-drilled holes aligned for use on all D&R mounts

Ports:

- USB - 2
- Serial (1) D sub 9 pin
- 1 LAN port connector (optional ruggedize LAN expansion hub available)
- External video (D-Sub 15 pin)
- 16 V DC I/P Power jack
- 1 HDMI Port



**215-0164**



**215-0167**



- Input / Output cables for the power supply and dock

## BROTHER POCKETJET FACEPLATE



**801-0163B**

**Faceplate for Brother PocketJet  
Printer with Dual Cup Holder**

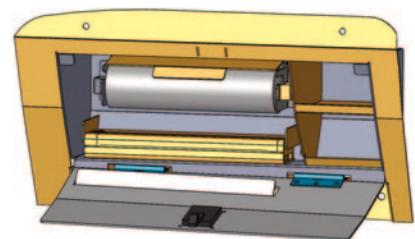
- Printer and Paper Roll not included

## GLOVE BOX PRINTER SETUP

### 2020 Ford Utility Glove Box Printer Conversion Kit (918-0051A)



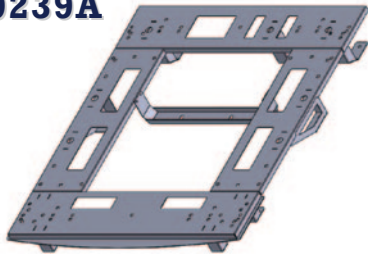
- Houses - Brother Printer Models PJ600 or PJ700 with paper roll
- Features 2 small storage compartments on side
- Print while glove box is closed
- Hidden wiring provides clean finish
- Easy printer removal for maintenance
- Latching System
- Simple installation





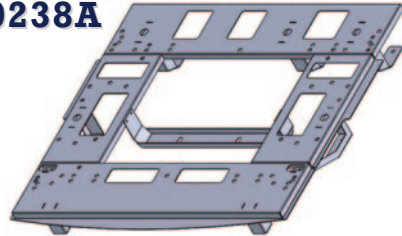
**A subframe is required for the proper/safe installation of any type of Equipment Storage Solution in a vehicle.**

**933-0239A**



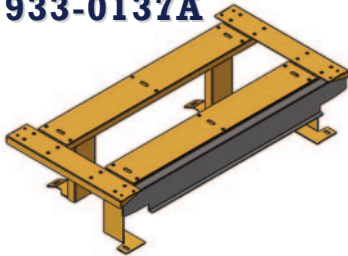
■ 2021 Chevrolet Suburban Full Subframe

**933-0238A**



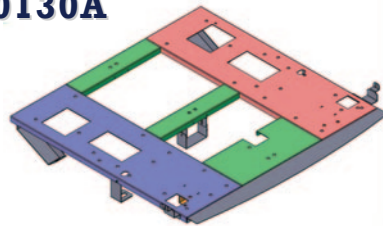
■ 2021-2023 Chevrolet Tahoe Full Subframe

**933-0137A**



■ Designed for 2021-2023 Ford Civilian Explorer  
■ Trunk Raised Frame Shelf

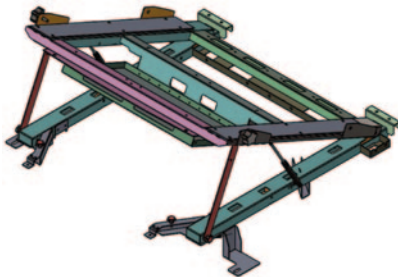
**933-0130A**



■ Subframe for installing storage cabinets.  
■ Designed for 2021-2023 Ford Expedition

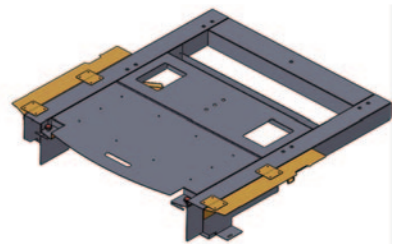
**933-0133A**

- Designed for 2021-2023 Interceptor Utility
- Lifiable subframe supports the weight of unloaded cabinet
- Specifications:  
Width - 40.5"  
Height - 7.16"  
Depth - 43.17"



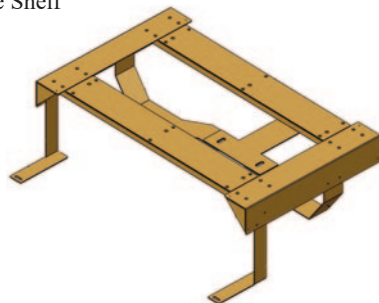
**933-0135A**

- Designed for 2021-2023 Ford Utility Interceptor.
- Optional top cover plate 833-1632A (order under 933-0136A)
- No Tire Access
- Specifications:  
Width - 40.25"  
Height - 7.96"  
Depth - 44.95"

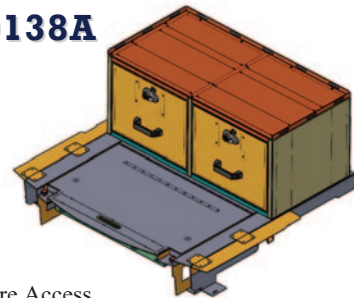


**933-0132A**

- Designed for 2021-2023 Ford Interceptor Utility
- Utility trunk Raised Frame Shelf
- Specifications:  
Width - 47.71"  
Height - 15.50"  
Depth - 29.00"



**933-0138A**



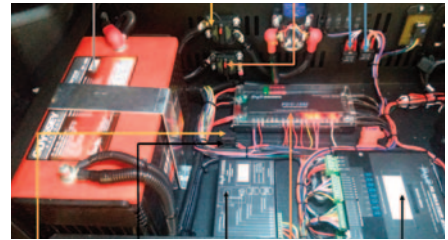
- With Tire Access
- Subframe designed for 2021-2023 Utility Interceptor
- Subframe fits only cabinets with 20" Depth



## ELECTRONICS STORAGE BOXES

### 934-0751A & 933-0105A

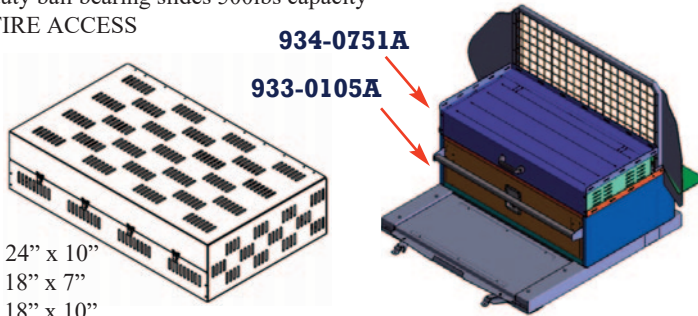
- Electronics Enclosure (934-0751A) mounted on single drawer cabinet (933-0105A)
- Dimensions:  
934-0751A: W-40", D-19.50", H-16"  
933-0105A: W-40 1/4", D-24", H-12"
- Cabinet constructed from 0.09" (11ga) Aluminum
- Front Locking Pad Latch with dual deadbolt to keep drawer cabinet closed
- Grab bar full width of cabinet to help with opening
- Rubber lined drawer bottom and cabinet top
- Adjustable dividers running front to back
- One pair 24" Heavy duty ball bearing slides 500lbs capacity
- NOTE: NO SPARE TIRE ACCESS



### 934-0526A

Electronics Storage Box comes in 3 different sizes:

- 934-0526A — 40" x 24" x 10"
- 934-0526B — 40" x 18" x 7"
- 934-0526C — 40" x 18" x 10"

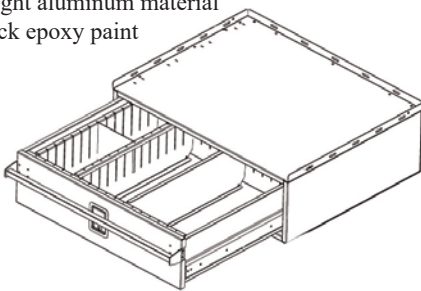


## EQUIPMENT STORAGE SYSTEMS

Contact Us for full listing of our Equipment Storage Systems

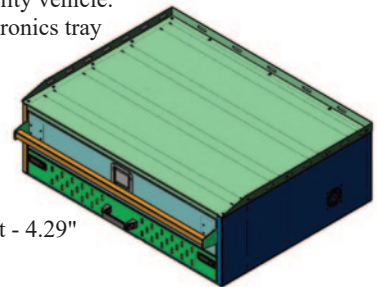
### 933-0102A

- Designed for 2021-2023 Dodge Durango
- Single drawer
- Lightweight aluminum material
- Hard black epoxy paint



### 934-0880A

- Designed for 2021-2023 Ford Utility Interceptor.
- Single drawer with Electronics Drawer create a perfect storage solution for the back of your Interceptor Utility vehicle.
- Wire management arm and removable electronics tray located in Electronics Drawer
- Specifications:  
- Width - 40.00"  
- Depth - 30.11"  
- Total Height - 12.09"  
- Bottom Electronics Drawer Height - 4.29"  
- Top Single Drawer Height - 6.44"

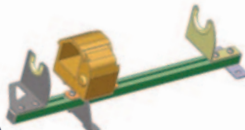


## WEAPON STORAGE/MOUNTS

### Dodge Charger Trunk Gun Mount (936-0429A)



### Gun Tree Weapon Mount (934-0412A)



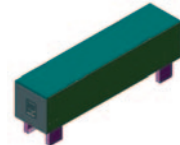
### EFT Gun Tree Weapon Mount (934-0009A)



### Gun Tree Weapon Mount (934-0148A)



### Rifle Box Storage (934-0392A)

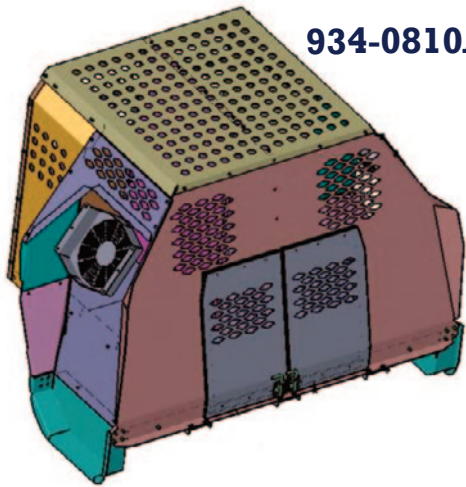


### Gun Tree 2-Weapon Mount (934-0317B)



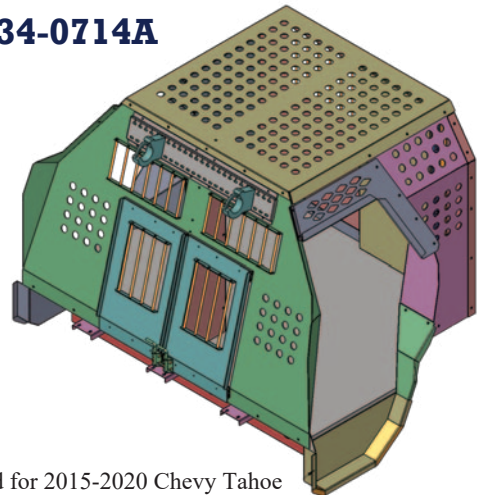


**K9 KENNELS**



**934-0810A**

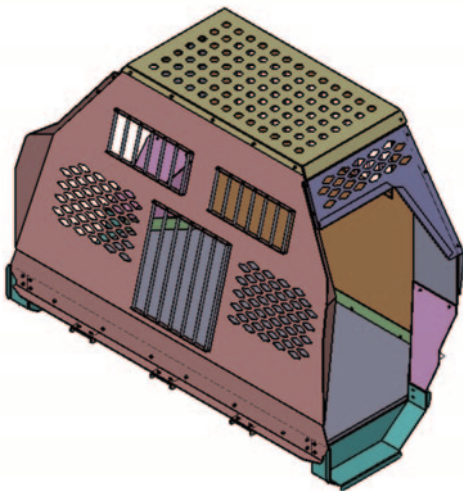
- Designed for 2015-2020 Chevy Tahoe
- Dual K9 Kennel
- Front Sliding doors
- Cages are versatile, spacious
- 1/4" floor rubber mat
- Keeping your dog safe and secure
- Easy to clean



**934-0714A**

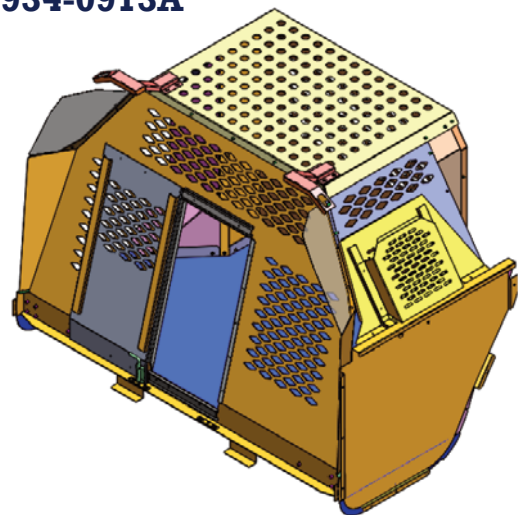
- Designed for 2015-2020 Chevy Tahoe
- K9 Kennel for two dogs with center door assembly
- Each cage is custom build to the dimensions of your vehicle
- Keeping your dog safe and secure
- DS and PS front slide door
- Gun mount bracket
- Front Sliding doors
- Cages are versatile, spacious
- 3/4" floor rubber mat
- Easy to clean

**934-0752A**



- Designed for 2015-2020 Chevy Tahoe
- Sliding door could be easily add in place of front bars
- K9 Kennel for single dog
- DS and PS front slide door
- Cages are versatile, spacious
- 1/4" floor rubber mat
- Keeping your dog safe and secure
- Easy to clean

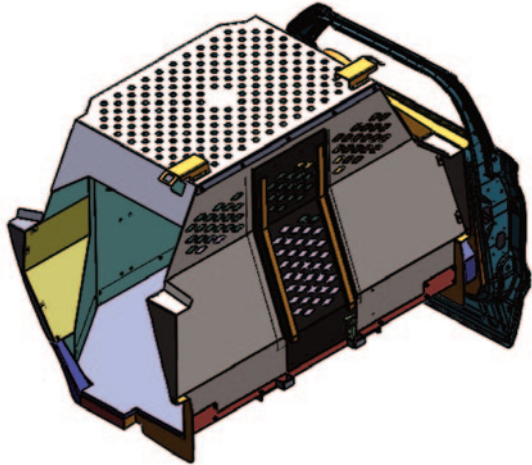
**934-0913A**



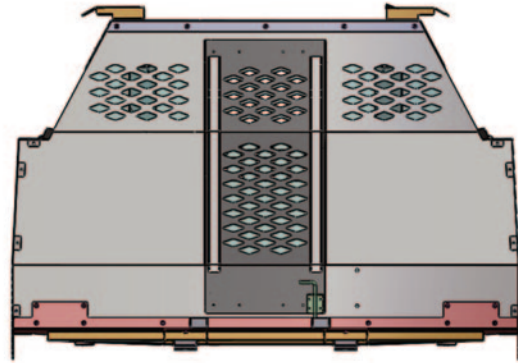
- Designed for 2021-2023 Chevy Tahoe



**934-0884A**

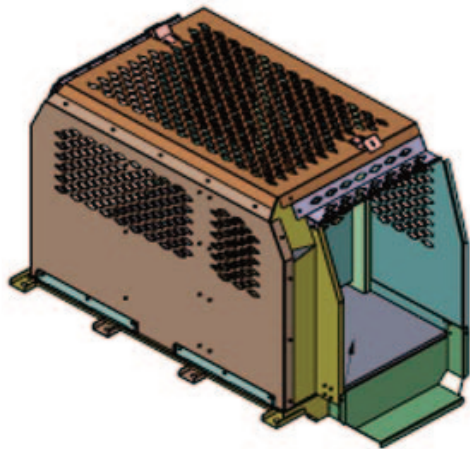


**934-0887A**

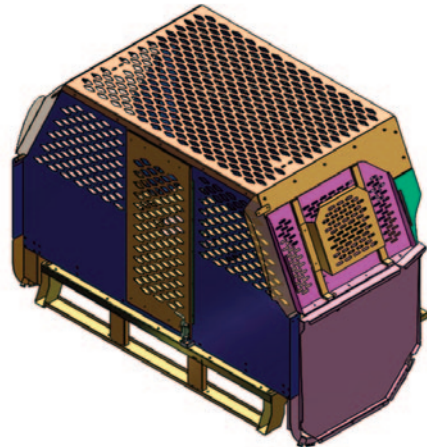


- Designed for 2021-2023 Ford Interceptor Utility
- Full K9 Kennel w/Speaker, Airbag compatible
- Each cage is custom build to the dimensions of your vehicle
- Air ducting system that connects to OEM Rear Vents (must have rear Air Packaging)
- 10" Fan (optional)
- 3/4" Rubber mat
- Two 14" Heavy Duty Slides used for Dog door
- Cages are versatile and spacious
- Keeping your dog safe and secure

**934-0729A**



**934-0934A**



- K9 Kennel designed for 2015-2020 F-150 Super Crew Cab Pickup
- K9 Kennel for single dog
- Sliding Door
- Cages are versatile, spacious
- 3/4" floor rubber mat
- Keeping your dog safe and secure
- Easy to clean

- Designed for 2021-2023 Ford F150

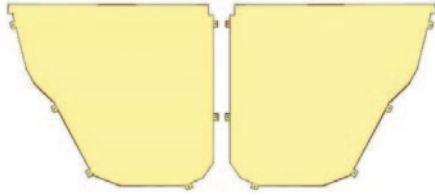
**K9 MODULE ACCESSORIES / OPTIONS:**

- Hot-N-Pop Kit
- Fans
- Air Circulation Kit
- Water Bowl
- Dual Colour Interior Light Kit

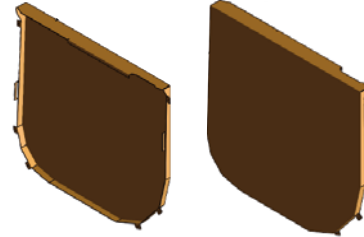


**DOOR SKINS**

**2015-2020 Chevy Tahoe, F150  
Door Skin Pair (937-0335A)**



**2021-2023 F150 Door  
Skin Pair (937-0340A)**



**2015-2020 Dodge  
Charger Door Skin  
Pair (937-0181A)**

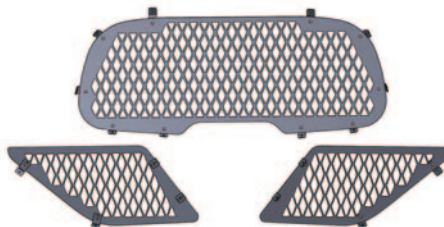
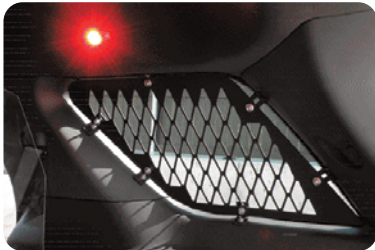


**2015-2020 Ford  
Interceptor  
Utility Door  
Skin Pair (937-0318A)**



**REAR WINDOW  
GUARDS**

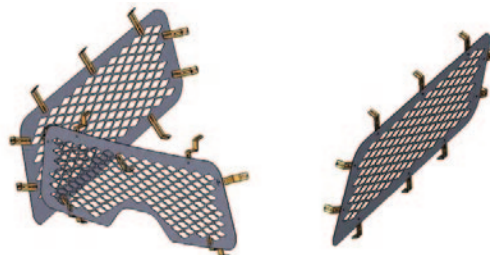
**2021-2023 Ford Interceptor Utility Window Guards (937-0362A)**



**2015-2023 Chevy Tahoe  
Window Guards  
(937-0336A)**

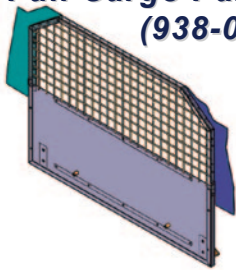


**2019-2023 Ford Expedition  
Window Guards (937-0357A)**



## CARGO PARTITIONS

**2021-2023 Chevy Tahoe Full Cargo Partition (938-0157A)**

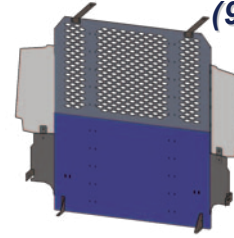


**2021-2023 Ford Interceptor Utility Raised Subframe Partition (938-0150A)**

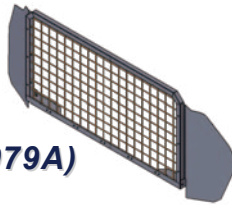


■ Includes Cargo Partition Mesh (2 x 2)

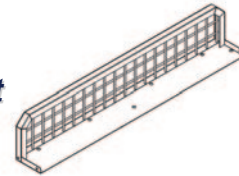
**2015-2020 Ford Transit Rear Cargo Partition (938-0103A)**



**2020 Ford Interceptor Utility Cargo Partition (938-0079A)**

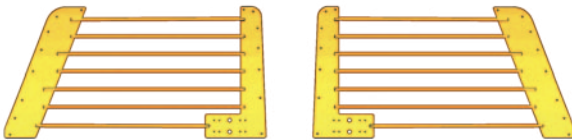


**2020 Ford Interceptor Utility Cabinet Top Partition (938-0084A)**



## WINDOW BARS

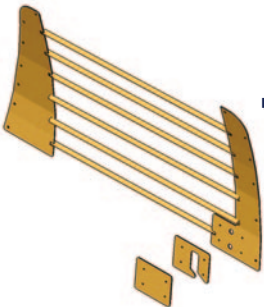
**2021 Chevy Tahoe Window Bars DS & PS (937-0367A)**



**2021-2023 Ford F150 WG DS & PS (937-0342A)**

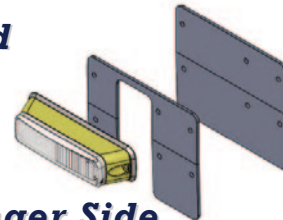


**2021-2023 Chevy Tahoe Window Bar Light Kit (933-0138A)**

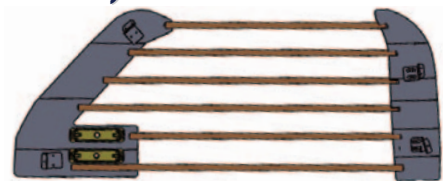


■ Window bars and Surface Mount Lights Sold Separately

**2021-2023 Ford Interceptor Utility Window Bars Driver/Passenger Side Light Kit (937-0361A)**



**2021-2023 Ford Interceptor Utility Window Bars Driver/Passenger Side (937-0360A)**



- Rear window bar is offering protection from windows being kicked out by restrained prisoners while placed in the back seat.
- Designed to fit with rear partition cages by Setina Manufacturing.
- Optional: Light Bracket for Genesis or MS6 lights - 937-0361A



CUSTOM BUILDS

D&R Electronics has been working with clients to design and build custom mobile work stations to meet detailed requirements that are necessary when stationed in the field. From custom table tops and storage solutions to power management and lighting fixtures, D&R has your fleet covered whether you require a mobile command center or an on the go work station for your fleet service technicians. For custom mobile solutions please contact D&R Electronics today to set up your free consultation with our design team. Until then, check out some of our more recent builds below!

MOBILE COMMAND CENTER

DESK WITH WORKING LIGHTS



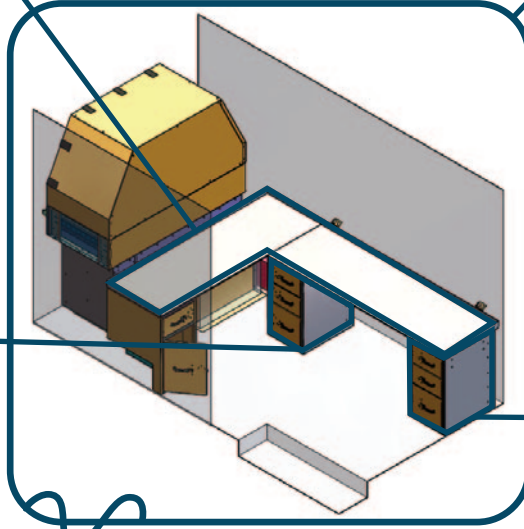
DUAL COLOUR OVERHEAD INTERIOR LIGHTS



FILING CABINET



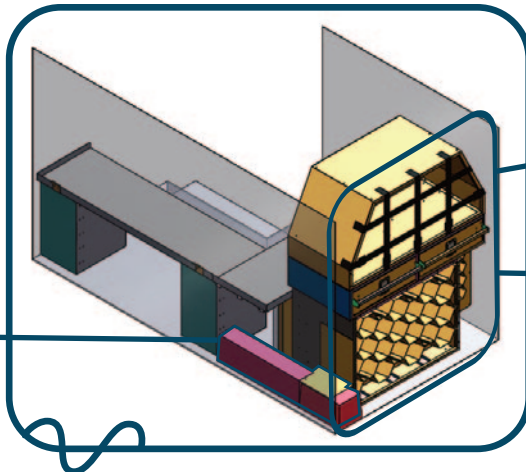
FILING CABINET



OPEN CARGO AREA WITH TIE-DOWN STRAPS



BATTERY HOLDER



OXYGEN BOTTLE HOLDER





## AIR QUALITY MONITORING VEHICLE

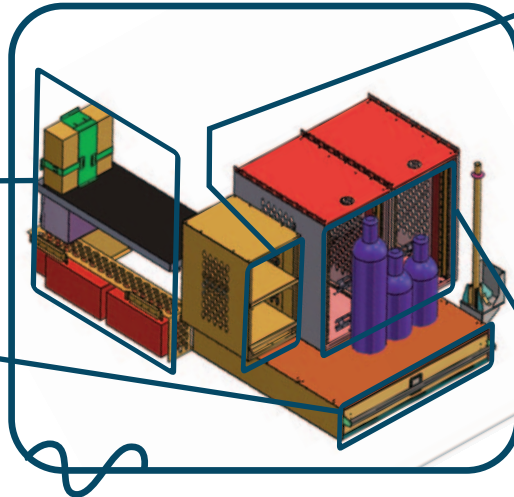
**DESK WITH PARTITION AND POWER MANAGEMENT**



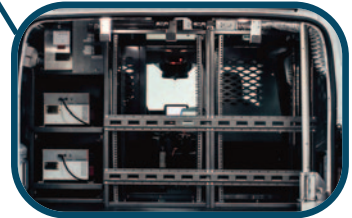
**SLIDE-OUT TRANSFORMER RACK**



**CUSTOM STORAGE DRAWER**



**2IU SERVER RACKS (x 2)**



## FLEET SERVICE VEHICLE

**OVERHEAD STORAGE**



**INTERIOR LIGHTS**



**WELDER**



**LOCKERS**

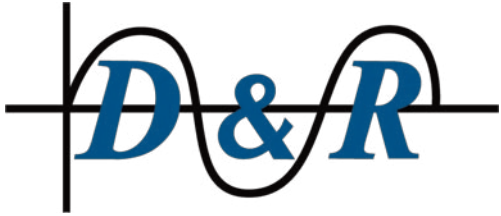


**CUSTOM SLIDE-OUT TRAY FOR AIR COMPRESSOR**



**WORK BENCH WITH STORAGE**





**Manufacturer of Fleet Vehicle Equipment**  
*Since 1976*



**8820 GEORGE BOLTON PKWY.  
BOLTON, ONTARIO L7E 2Y4 CANADA  
TEL: 905-951-9997  
FAX: 905-951-0019  
TOLL FREE: 1-800-538-7338  
[www.dandrelectronics.com](http://www.dandrelectronics.com)**



**Y032024**